



NAMI CLARK COUNTY

Affiliate of the National Alliance on Mental Illness
The Nation's Voice on Mental Illness



"Our mission is to improve the quality of life for all those struggling with and affected by brain disorders; people with a psychiatric condition, family members, mental health professionals, and concerned citizens. Our goal is to support, educate, advocate, promote recovery, encourage research, and political advocacy."

Office Info

Office & Library

Hours:

Monday – Thursday
11:00 am– 2:00 pm
(closed on holidays)

Phone:

(360) 695-2823

Fax:

(360) 823-0779

Physical Address

317 East 39th Street
(SW corner of 39th
& Main Street)

Mailing Address:

PO Box 5353
Vancouver, WA 98668

Website:

www.nami-clark.com



March
April
2007

COMING EVENTS:

Jan. 9th Tues.

Education Meeting: 7:00-8:30pm

Guest: Northwest Healthcare

**Insight and resources to help you provide
futures for loved ones with a mental illness.**

Jan.15th Mon.

NAMI Day: Annual lobby day in Olympia

For more information, visit www.nami.org

Jan. 18th Thurs.

Family to Family Classes:

First class 6:30-9:00pm

**Call the office to register for this free 12-week
education program on mental health through
illness to wellness.**

Jan. 24th Weds.

Disabilities Legislative Reception

**WA state legislators discuss issues critical to
those with disabilities. (Held in Olympia) For
more information, visit www.nami.org**

Feb. 13th Tues.

Education Meeting: 7:00-8:30pm

**Guest: Recovery Incorporated Who are they
and how can working towards recovery
empower you in taking care of your illness.**

Board of Directors

Officers

President: Julie Brown
Vice Pres.: Harley Sell
Secretary: Judy Straub
Treasurer: Vacant
Co-Treasurer: Vacant

Directors

Abe Perlstein
Don Greenwood
Virginia Cox
Michele Wollert
George Delgado

Monthly Meetings:

Education Meeting

2nd Tuesday
6:45-8:30 p.m.

Support Group

3rd Tuesday
7-8:30 p.m.

Depression Bipolar Support Alliance Group

3rd Thursday
7-9:00 p.m.



Stay informed on
mental health care in
the

**Washington State
Legislature**

fridayfacts@namiwa.info

Stay informed on
**NAMI National
News, Education, and
Support Groups**
www.nami.org

EDUCATION MEETINGS

Every 2nd Tuesday 7:00-8:30 pm

NAMI offers *free* public education meetings. Join us in learning more about mental health, illness and wellness, held at the Wellness Project Building

March's meeting: Tues. 13th

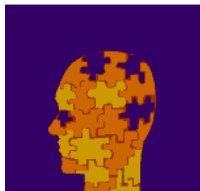
Featuring:

Topic:

April's meeting: Tues. 10th

Featuring:

Topic:



FAMILY-TO-FAMILY CLASSES

NAMI Clark County teaches a class about learning to live with a family member who has mental illness. This is a 12 week class, one night a week. Our next group of classes will begin on January 18th. Please call the office for more information or to register for the next class. Classes are offered at no-cost. All that is required is a commitment to attend all 12 classes to the best of your ability.



It's time again to nominate new officers and board members for the next two year term!

Current Positions:

Secretary~ Judy Straub

Treasurer~ **VACANT** (*no candidate yet*)

Board Position Nominees:

Lauretta Walsh Michael Mattox

Linda Phelan Monique Harris

Nancy Shafton Chriss Denny

2007 NAMI NATIONAL CONVENTION

San Diego, CA

Weds. June 20 – Sun. June 24, 2007

This convention will offer four days of top-notch educational opportunities, insights on strategies to achieve our goals in mental health advancement, and plenty of networking time.

Everyone is invited to attend this Convention! If you'd like to know more about this event, log on to

www.nami.org

Support NAMI Nationally

When you shop online at AMAZON.com

Shopping through Amazon.com can help NAMI improve the lives of people living with serious mental illness with no extra cost to you!

Just remember, to use one of these special links:

www.nami.org/amazon

or www.amazon.com/exec/obidos/redirect?tag=namiorg-20&path=subst/home/home.html