



NAMI - CLARK COUNTY

Affiliate of the National Alliance on Mental Illness
The Nation's Voice on Mental Illness



"Our mission is to improve the quality of life for all those struggling with and affected by brain disorders; people with a psychiatric condition, family members, mental health professionals, and concerned citizens. Our goal is to support, educate, advocate, promote recovery, encourage research, and political advocacy."

Office Info

Office & Library

Hours:

Monday – Thursday
11:00 am– 2:00 pm
(closed on holidays)

Phone:

(360) 695-2823

Fax:

(360) 823-1088

Physical Address

317 East 39th Street
(SW corner of 39th
& Main Street)

Mailing Address:

PO Box 5353
Vancouver, WA
98668

Website:

www.nami-clark.com



2008

COMING EVENTS

March 11 (2nd Tuesday)

Education Meeting: 7:00-8:30pm

**Meet NAMI Clark County
Executive Director
Janice McKenzie**

GUEST SPEAKERS

Vanessa R. Gaston, Director
Melanie Green, Peer Support Specialist
Pat Roe, Family Support Specialist
Department of Community Services

Don't miss this opportunity to learn about the broad range of services available to you and your family plus exciting changes to come.

April 8 (2nd Tuesday)

Education Meeting: 7:00-8:30pm

**Guest Speaker: Mary Jadwisiak
Youth Suicide Prevention Program**

Mary will share important information regarding her program services and some helpful guidelines for you and your loved ones.

**March 18 & April 16 (3rd Tuesdays)
Monthly Family Support Group**

Board of Directors

Officers

President: Don Greenwood
Vice Pres.: Harley Sell
Secretary: Michele Wollert

Directors

Chriss Denny
Michael Mattox
Linda Phelan
Nancy Shafton
Loretta Walsh
Lennie Campbell
Nealane Riem

You Are Invited

Community Family Support Group

2nd Wednesday each Month
7:00 to 8:30 PM

Co-Sponsored by
NAMI-Clark County
And

Southwest Washington Medical
Center Behavioral Health Services:
ADAPT

(Awareness Directed Activities for
Personal Transformation)

SWMC Memorial Campus
3400 Main Street, Vancouver
ADAPT Living Room, 3rd Floor

Questions

NAMI-Clark County
Don Greenwood-571-5871

ADAPT:

Nancy Gierut-Wicker -696-5300

Monthly Meetings

Education Meeting

2nd Tuesday
6:45-8:30 p.m.

Family Support Group

3rd Tuesday
7-8:30 p.m.

Depression Bipolar Support Alliance Group

3rd Thursday
7-9:00 p.m.



***A Word from President
Don Greenwood***



NAMI-Clark County has its first ever full-time Executive Director! Let us rejoice and be grateful! On Wednesday night, February 20, your board of directors chose Janice McKenzie of Aloha, Oregon to fill the position made possible by a grant from the Clark County Regional Support Network.

Janice previously was the National Support Groups and Volunteer Services Manager of the National Psoriasis Foundation, headquartered in Portland. Before that, she was the Manager of Volunteer Services for the Medical Teams International organization in Portland.

Janice has also worked extensively in church related positions, as the Ministering Arts Manager of Beaverton Christian Church and volunteered as the Administrator – Children’s Education Ministry in area Churches of Christ.

I hope each of you will call or drop by our NAMI Office to welcome Janice, and support her in her new position.

The first months she is with us, will be a time of orientation and learning for Janice. I will be introducing her to the leaders and personnel of Clark County agencies that serve mental health consumers and their families. She will be learning about our programs and offerings to the community. If you as a member of NAMI are close to agency leaders or community leaders, please set up a time to introduce them to our Executive Director. Or, just drop by the office and ask Janice how you can help and support her.

We cannot expect Janice to “do it all” for NAMI-Clark County. We cannot think, “Well now that we have an Executive Director, she can take care of all that needs to be done.” One of her primary responsibilities, for which she is so well suited, is to recruit and train volunteers. We need much more participation from our membership, so be thinking in which area your talents fit.

I rather often hear NAMI members bemoan the fact that we as an organization are not doing more in this area or that. I don’t understand how those who complain can expect so much from such a small core of volunteers. I feel like asking those who wish we would do more, “What then are you going to do about it?”

“What then are you, NAMI of Clark Members, going to do to further support our mission?”

In the generation since we of NAMI began our work here in Clark County, the population has tripled! We can no longer sit back and wait or hope people will find us and come to us for help. Let us come together around Janice McKenzie, and move towards fulfillment of our mission, which is, “to improve the quality of life for all those struggling with and affected by brain disorders; people with a psychiatric condition, family members, mental health professionals, and concerned citizens.”

Let each one of us join together to better achieve our goal, which is, “to support, educate, advocate, promote recovery, encourage research and political advocacy.”

Sincerely yours,

Don Greenwood

Don Greenwood, President
NAMI-Clark County

Meet
Janice McKenzie
NAMI Clark County Executive Director



Janice McKenzie comes to **NAMI Clark County** with over 15 years experience managing volunteer based programs in non-profit environments. Most recently, she developed a national support group program for the National Psoriasis Foundation and implemented a successful grassroots volunteer program. One of the strengths that Janice brings to **NAMI Clark County** is her ability to develop working partnerships.

Janice is drawn to serve with **NAMI** because of family members who are clients and the loss of a close friend with BPD to suicide. Janice was a support person for her friend and experienced common issues such as lack of housing, access to treatment, compliance and financial obstacles. As the new Executive Director, she is committed to working for the people of Clark County and building awareness, understanding and resources for clients and their families.

**DEPARTMENT OF COMMUNITY SERVICES LAUNCHES
WEBSITE AS RESOURCE FOR SERVICES**



Network of Care for Behavioral Health & Community Services

For a comprehensive listing of resources and news visit www.clark.wa.networkofcare.org

This Web site is a resource for individuals, families and agencies concerned with mental health, substance abuse, developmental disabilities, public health, and weatherization and housing. It provides information about laws and related news, as well as communication tools and other features. Regardless of where you begin your search, the Network of Care helps you find what you need - it helps ensure that there is "No Wrong Door" for those who need services. This Web site can greatly assist in our efforts to protect our greatest human asset - our beautiful minds.

In addition the link to "Calendars" will take you to "Community Calendars" where NAMI-Clark County regular programs and future programs will now be listed.

What if NAMI Clark County had a penny for every time you searched the Internet?

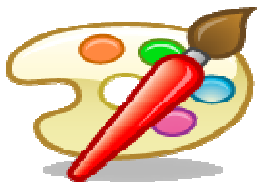
GoodSearch

You Search or Shop...
We Give!

Search the web with www.goodsearch.com and money from Yahoo advertisers will go to NAMI Clark County without you spending a dime!

Promoted by Oprah, the NY times, and Wall Street Journal, this is a fun and easy way to help NAMI Clark County earn funds. Go to www.goodsearch.com, and enter "NAMI Clark County" in the charity box. It's that simple!

A word from Department of Community Services



VISIONS OF RECOVERY POSTER CONTEST

The Clark County Regional Support Network, as part of an ongoing effort to promote mental health recovery and reduce the stigma associated with mental illness, is hosting the Visions of Recover Poster Contest.

We are inviting everyone who has received public mental health services in Clark County, and/or family members of recipients, to submit art that reflects their vision of what recovery means to them. We are looking for paintings or drawings, collages (using works that do not include copyrighted materials), original photography, and/or wall hangings that meet the size requirements (18" x 24" and no more than 2" thick) and can be reproduced as a poster. We will be displaying the works and are asking for permission to have the art for up to 1 year to share with the community as a whole.

Artwork must be submitted to the RSN offices between March 17th and 31st. There will be a public viewing of all entries at the Center for Community Health on April 8th from noon to 3 pm.

Six prizes will be awarded ranging in size from \$100 to \$225! The winning entries will be unveiled at the April Mental Health Advisory Board meeting, April 30th, as an introduction to Mental Health Recovery Awareness month in May. In addition, the winning poster will be reproduced for distribution throughout our community and our state in an effort to educate others about recovery.

Contest rules and entry forms are available in the CVAB office and may also be found on the Clark County web site at

<http://www.clark.wa.gov/mental-health/recovery/index.html>

If you have questions about the contest, please call Pat Roe or Melanie Green at the Department of Community Services at 360-397-2130.

CONFERENCE SCHEDULED

Challenges in care giving: Giving Care, Taking Care"



Challenges in Care giving: Giving Care, Taking Care, a caregiver training conference will be offered on Monday, June 2, 2008 at the Tukwila Community Center in Tukwila, Washington. The event is sponsored by Aging and Disability Services Administration and Elder Health Northwest, along with the support of numerous community organizations.

The conference is designed to provide current, practical skills and resources that community caregivers can use in their daily care giving responsibilities. The conference is intended for:

- Family caregivers (spouses, adult children, parents of adults with disabilities, or other relatives)
- In-home caregivers (home care aides, individual providers)
- Adult Family Home Providers
- Adult Day Care or Assisted Living facility staff
- Geriatric mental health service workers

The Early Registration fee (by May 19) for individual caregivers is \$25. They include family members, individual COPES and chore providers. Scholarships are available for unpaid family caregivers.

The Early Registration fee for agency-based caregivers is \$50. Fees include workshops, lunch and resource exhibits.

Registration forms will be available in April and space is limited - so don't delay!

For more information or to receive a full brochure and registration materials, please call 1-800-422-3263 or 360-725-2544.



MEMBERSHIP DUES

ANNUAL DUES - \$35.00

DONATION \$ _____

No one is refused membership due to economic hardship. Some scholarships are available.

★ We are a registered non-profit organization 501(C)(3) and donations are tax deductible.

Name: _____

Address: _____

City: _____

State & Zip: _____

Phone: (____) _____

E-Mail: _____

Membership Includes:

- ★ NAMI National Advocate Magazine, Quarterly
- ★ NAMI Washington Friday Facts, weekly e-mail by request
- ★ NAMI Clark County Newsletter, bi-monthly

Please return your payment and completed form to:

NAMI Clark County
P.O. Box 5353
Vancouver, WA 98668



NAMI - CLARK COUNTY

Affiliate of the National Alliance on Mental Illness
The Nation's Voice on Mental Illness



"Our mission is to improve the quality of life for all those struggling with and affected by brain disorders; people with a psychiatric condition, family members, mental health professionals, and concerned citizens. Our goal is to support, educate, advocate, promote recovery, encourage research, and political advocacy."

Office Info

Office & Library

Hours:

Monday – Thursday
11:00 am– 2:00 pm
(closed on holidays)

Phone:

(360) 695-2823

Fax:

(360) 823-1088

Physical Address

317 East 39th Street
(SW corner of 39th
& Main Street)

Mailing Address:

PO Box 5353
Vancouver, WA
98668

Website:

www.nami-clark.com



2008

COMING EVENTS

March 11 (2nd Tuesday)

Education Meeting: 7:00-8:30pm

**Meet NAMI Clark County
Executive Director
Janice McKenzie**

GUEST SPEAKERS

Vanessa R. Gaston, Director
Melanie Green, Peer Support Specialist
Pat Roe, Family Support Specialist
Department of Community Services

Don't miss this opportunity to learn about the broad range of services available to you and your family plus exciting changes to come.

April 8 (2nd Tuesday)

Education Meeting: 7:00-8:30pm

**Guest Speaker: Mary Jadwisiak
Youth Suicide Prevention Program**

Mary will share important information regarding her program services and some helpful guidelines for you and your loved ones.

**March 18 & April 16 (3rd Tuesdays)
Monthly Family Support Group**

Board of Directors

Officers

President: Don Greenwood
Vice Pres.: Harley Sell
Secretary: Michele Wollert

Directors

Chriss Denny
Michael Mattox
Linda Phelan
Nancy Shafton
Loretta Walsh
Lennie Campbell
Nealane Riem

You Are Invited

Community Family Support Group

2nd Wednesday each Month
7:00 to 8:30 PM

Co-Sponsored by
NAMI-Clark County
And

Southwest Washington Medical
Center Behavioral Health Services:
ADAPT

(Awareness Directed Activities for
Personal Transformation)

SWMC Memorial Campus
3400 Main Street, Vancouver
ADAPT Living Room, 3rd Floor

Questions

NAMI-Clark County
Don Greenwood-571-5871

ADAPT:

Nancy Gierut-Wicker -696-5300

Monthly Meetings

Education Meeting

2nd Tuesday
6:45-8:30 p.m.

Family Support Group

3rd Tuesday
7-8:30 p.m.

Depression Bipolar Support Alliance Group

3rd Thursday
7-9:00 p.m.



***A Word from President
Don Greenwood***



NAMI-Clark County has its first ever full-time Executive Director! Let us rejoice and be grateful! On Wednesday night, February 20, your board of directors chose Janice McKenzie of Aloha, Oregon to fill the position made possible by a grant from the Clark County Regional Support Network.

Janice previously was the National Support Groups and Volunteer Services Manager of the National Psoriasis Foundation, headquartered in Portland. Before that, she was the Manager of Volunteer Services for the Medical Teams International organization in Portland.

Janice has also worked extensively in church related positions, as the Ministering Arts Manager of Beaverton Christian Church and volunteered as the Administrator – Children’s Education Ministry in area Churches of Christ.

I hope each of you will call or drop by our NAMI Office to welcome Janice, and support her in her new position.

The first months she is with us, will be a time of orientation and learning for Janice. I will be introducing her to the leaders and personnel of Clark County agencies that serve mental health consumers and their families. She will be learning about our programs and offerings to the community. If you as a member of NAMI are close to agency leaders or community leaders, please set up a time to introduce them to our Executive Director. Or, just drop by the office and ask Janice how you can help and support her.

We cannot expect Janice to “do it all” for NAMI-Clark County. We cannot think, “Well now that we have an Executive Director, she can take care of all that needs to be done.” One of her primary responsibilities, for which she is so well suited, is to recruit and train volunteers. We need much more participation from our membership, so be thinking in which area your talents fit.

I rather often hear NAMI members bemoan the fact that we as an organization are not doing more in this area or that. I don’t understand how those who complain can expect so much from such a small core of volunteers. I feel like asking those who wish we would do more, “What then are you going to do about it?”

“What then are you, NAMI of Clark Members, going to do to further support our mission?”

In the generation since we of NAMI began our work here in Clark County, the population has tripled! We can no longer sit back and wait or hope people will find us and come to us for help. Let us come together around Janice McKenzie, and move towards fulfillment of our mission, which is, “to improve the quality of life for all those struggling with and affected by brain disorders; people with a psychiatric condition, family members, mental health professionals, and concerned citizens.”

Let each one of us join together to better achieve our goal, which is, “to support, educate, advocate, promote recovery, encourage research and political advocacy.”

Sincerely yours,

Don Greenwood

Don Greenwood, President
NAMI-Clark County

Meet
Janice McKenzie
NAMI Clark County Executive Director



Janice McKenzie comes to **NAMI Clark County** with over 15 years experience managing volunteer based programs in non-profit environments. Most recently, she developed a national support group program for the National Psoriasis Foundation and implemented a successful grassroots volunteer program. One of the strengths that Janice brings to **NAMI Clark County** is her ability to develop working partnerships.

Janice is drawn to serve with **NAMI** because of family members who are clients and the loss of a close friend with BPD to suicide. Janice was a support person for her friend and experienced common issues such as lack of housing, access to treatment, compliance and financial obstacles. As the new Executive Director, she is committed to working for the people of Clark County and building awareness, understanding and resources for clients and their families.

**DEPARTMENT OF COMMUNITY SERVICES LAUNCHES
WEBSITE AS RESOURCE FOR SERVICES**



Network of Care for Behavioral Health & Community Services

For a comprehensive listing of resources and news visit www.clark.wa.networkofcare.org

This Web site is a resource for individuals, families and agencies concerned with mental health, substance abuse, developmental disabilities, public health, and weatherization and housing. It provides information about laws and related news, as well as communication tools and other features. Regardless of where you begin your search, the Network of Care helps you find what you need - it helps ensure that there is "No Wrong Door" for those who need services. This Web site can greatly assist in our efforts to protect our greatest human asset - our beautiful minds.

In addition the link to "Calendars" will take you to "Community Calendars" where NAMI-Clark County regular programs and future programs will now be listed.

What if NAMI Clark County had a penny for every time you searched the Internet?

GoodSearch

You Search or Shop...
We Give!

Search the web with www.goodsearch.com and money from Yahoo advertisers will go to NAMI Clark County without you spending a dime!

Promoted by Oprah, the NY times, and Wall Street Journal, this is a fun and easy way to help NAMI Clark County earn funds. Go to www.goodsearch.com, and enter "NAMI Clark County" in the charity box. It's that simple!

A word from Department of Community Services



VISIONS OF RECOVERY POSTER CONTEST

The Clark County Regional Support Network, as part of an ongoing effort to promote mental health recovery and reduce the stigma associated with mental illness, is hosting the Visions of Recover Poster Contest.

We are inviting everyone who has received public mental health services in Clark County, and/or family members of recipients, to submit art that reflects their vision of what recovery means to them. We are looking for paintings or drawings, collages (using works that do not include copyrighted materials), original photography, and/or wall hangings that meet the size requirements (18" x 24" and no more than 2" thick) and can be reproduced as a poster. We will be displaying the works and are asking for permission to have the art for up to 1 year to share with the community as a whole.

Artwork must be submitted to the RSN offices between March 17th and 31st. There will be a public viewing of all entries at the Center for Community Health on April 8th from noon to 3 pm.

Six prizes will be awarded ranging in size from \$100 to \$225! The winning entries will be unveiled at the April Mental Health Advisory Board meeting, April 30th, as an introduction to Mental Health Recovery Awareness month in May. In addition, the winning poster will be reproduced for distribution throughout our community and our state in an effort to educate others about recovery.

Contest rules and entry forms are available in the CVAB office and may also be found on the Clark County web site at

<http://www.clark.wa.gov/mental-health/recovery/index.html>

If you have questions about the contest, please call Pat Roe or Melanie Green at the Department of Community Services at 360-397-2130.

CONFERENCE SCHEDULED

Challenges in care giving: Giving Care, Taking Care"



Challenges in Care giving: Giving Care, Taking Care, a caregiver training conference will be offered on Monday, June 2, 2008 at the Tukwila Community Center in Tukwila, Washington. The event is sponsored by Aging and Disability Services Administration and Elder Health Northwest, along with the support of numerous community organizations.

The conference is designed to provide current, practical skills and resources that community caregivers can use in their daily care giving responsibilities. The conference is intended for:

- Family caregivers (spouses, adult children, parents of adults with disabilities, or other relatives)
- In-home caregivers (home care aides, individual providers)
- Adult Family Home Providers
- Adult Day Care or Assisted Living facility staff
- Geriatric mental health service workers

The Early Registration fee (by May 19) for individual caregivers is \$25. They include family members, individual COPES and chore providers. Scholarships are available for unpaid family caregivers.

The Early Registration fee for agency-based caregivers is \$50. Fees include workshops, lunch and resource exhibits.

Registration forms will be available in April and space is limited - so don't delay!

For more information or to receive a full brochure and registration materials, please call 1-800-422-3263 or 360-725-2544.



MEMBERSHIP DUES

ANNUAL DUES - \$35.00

DONATION \$ _____

No one is refused membership due to economic hardship. Some scholarships are available.

★ We are a registered non-profit organization 501(C)(3) and donations are tax deductible.

Name: _____

Address: _____

City: _____

State & Zip: _____

Phone: (____) _____

E-Mail: _____

Membership Includes:

- ★ NAMI National Advocate Magazine, Quarterly
- ★ NAMI Washington Friday Facts, weekly e-mail by request
- ★ NAMI Clark County Newsletter, bi-monthly

Please return your payment and completed form to:

NAMI Clark County
P.O. Box 5353
Vancouver, WA 98668



NAMI - CLARK COUNTY

Affiliate of the National Alliance on Mental Illness
The Nation's Voice on Mental Illness



"Our mission is to improve the quality of life for all those struggling with and affected by brain disorders; people with a psychiatric condition, family members, mental health professionals, and concerned citizens. Our goal is to support, educate, advocate, promote recovery, encourage research, and political advocacy."

Office Info

Office & Library

Hours:

Monday – Thursday
11:00 am– 2:00 pm
(closed on holidays)

Phone:

(360) 695-2823

Fax:

(360) 823-1088

Physical Address

317 East 39th Street
(SW corner of 39th
& Main Street)

Mailing Address:

PO Box 5353
Vancouver, WA
98668

Website:

www.nami-clark.com



2008

COMING EVENTS

March 11 (2nd Tuesday)

Education Meeting: 7:00-8:30pm

**Meet NAMI Clark County
Executive Director
Janice McKenzie**

GUEST SPEAKERS

Vanessa R. Gaston, Director
Melanie Green, Peer Support Specialist
Pat Roe, Family Support Specialist
Department of Community Services

Don't miss this opportunity to learn about the broad range of services available to you and your family plus exciting changes to come.

April 8 (2nd Tuesday)

Education Meeting: 7:00-8:30pm

**Guest Speaker: Mary Jadwisiak
Youth Suicide Prevention Program**

Mary will share important information regarding her program services and some helpful guidelines for you and your loved ones.

**March 18 & April 16 (3rd Tuesdays)
Monthly Family Support Group**

Board of Directors

Officers

President: Don Greenwood
Vice Pres.: Harley Sell
Secretary: Michele Wollert

Directors

Chriss Denny
Michael Mattox
Linda Phelan
Nancy Shafton
Loretta Walsh
Lennie Campbell
Nealane Riem

You Are Invited

Community Family Support Group

2nd Wednesday each Month
7:00 to 8:30 PM

Co-Sponsored by
NAMI-Clark County
And

Southwest Washington Medical
Center Behavioral Health Services:
ADAPT

(Awareness Directed Activities for
Personal Transformation)

SWMC Memorial Campus
3400 Main Street, Vancouver
ADAPT Living Room, 3rd Floor

Questions

NAMI-Clark County
Don Greenwood-571-5871

ADAPT:

Nancy Gierut-Wicker -696-5300

Monthly Meetings

Education Meeting

2nd Tuesday
6:45-8:30 p.m.

Family Support Group

3rd Tuesday
7-8:30 p.m.

Depression Bipolar Support Alliance Group

3rd Thursday
7-9:00 p.m.



***A Word from President
Don Greenwood***



NAMI-Clark County has its first ever full-time Executive Director! Let us rejoice and be grateful! On Wednesday night, February 20, your board of directors chose Janice McKenzie of Aloha, Oregon to fill the position made possible by a grant from the Clark County Regional Support Network.

Janice previously was the National Support Groups and Volunteer Services Manager of the National Psoriasis Foundation, headquartered in Portland. Before that, she was the Manager of Volunteer Services for the Medical Teams International organization in Portland.

Janice has also worked extensively in church related positions, as the Ministering Arts Manager of Beaverton Christian Church and volunteered as the Administrator – Children’s Education Ministry in area Churches of Christ.

I hope each of you will call or drop by our NAMI Office to welcome Janice, and support her in her new position.

The first months she is with us, will be a time of orientation and learning for Janice. I will be introducing her to the leaders and personnel of Clark County agencies that serve mental health consumers and their families. She will be learning about our programs and offerings to the community. If you as a member of NAMI are close to agency leaders or community leaders, please set up a time to introduce them to our Executive Director. Or, just drop by the office and ask Janice how you can help and support her.

We cannot expect Janice to “do it all” for NAMI-Clark County. We cannot think, “Well now that we have an Executive Director, she can take care of all that needs to be done.” One of her primary responsibilities, for which she is so well suited, is to recruit and train volunteers. We need much more participation from our membership, so be thinking in which area your talents fit.

I rather often hear NAMI members bemoan the fact that we as an organization are not doing more in this area or that. I don’t understand how those who complain can expect so much from such a small core of volunteers. I feel like asking those who wish we would do more, “What then are you going to do about it?”

“What then are you, NAMI of Clark Members, going to do to further support our mission?”

In the generation since we of NAMI began our work here in Clark County, the population has tripled! We can no longer sit back and wait or hope people will find us and come to us for help. Let us come together around Janice McKenzie, and move towards fulfillment of our mission, which is, “to improve the quality of life for all those struggling with and affected by brain disorders; people with a psychiatric condition, family members, mental health professionals, and concerned citizens.”

Let each one of us join together to better achieve our goal, which is, “to support, educate, advocate, promote recovery, encourage research and political advocacy.”

Sincerely yours,

Don Greenwood

Don Greenwood, President
NAMI-Clark County

Meet
Janice McKenzie
NAMI Clark County Executive Director



Janice McKenzie comes to **NAMI Clark County** with over 15 years experience managing volunteer based programs in non-profit environments. Most recently, she developed a national support group program for the National Psoriasis Foundation and implemented a successful grassroots volunteer program. One of the strengths that Janice brings to **NAMI Clark County** is her ability to develop working partnerships.

Janice is drawn to serve with **NAMI** because of family members who are clients and the loss of a close friend with BPD to suicide. Janice was a support person for her friend and experienced common issues such as lack of housing, access to treatment, compliance and financial obstacles. As the new Executive Director, she is committed to working for the people of Clark County and building awareness, understanding and resources for clients and their families.

**DEPARTMENT OF COMMUNITY SERVICES LAUNCHES
WEBSITE AS RESOURCE FOR SERVICES**



Network of Care for Behavioral Health & Community Services

For a comprehensive listing of resources and news visit www.clark.wa.networkofcare.org

This Web site is a resource for individuals, families and agencies concerned with mental health, substance abuse, developmental disabilities, public health, and weatherization and housing. It provides information about laws and related news, as well as communication tools and other features. Regardless of where you begin your search, the Network of Care helps you find what you need - it helps ensure that there is "No Wrong Door" for those who need services. This Web site can greatly assist in our efforts to protect our greatest human asset - our beautiful minds.

In addition the link to "Calendars" will take you to "Community Calendars" where NAMI-Clark County regular programs and future programs will now be listed.

What if NAMI Clark County had a penny for every time you searched the Internet?

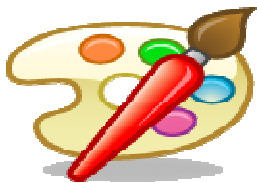
GoodSearch

You Search or Shop...
We Give!

Search the web with www.goodsearch.com and money from Yahoo advertisers will go to NAMI Clark County without you spending a dime!

Promoted by Oprah, the NY times, and Wall Street Journal, this is a fun and easy way to help NAMI Clark County earn funds. Go to www.goodsearch.com, and enter "NAMI Clark County" in the charity box. It's that simple!

A word from Department of Community Services



VISIONS OF RECOVERY POSTER CONTEST

The Clark County Regional Support Network, as part of an ongoing effort to promote mental health recovery and reduce the stigma associated with mental illness, is hosting the Visions of Recover Poster Contest.

We are inviting everyone who has received public mental health services in Clark County, and/or family members of recipients, to submit art that reflects their vision of what recovery means to them. We are looking for paintings or drawings, collages (using works that do not include copyrighted materials), original photography, and/or wall hangings that meet the size requirements (18" x 24" and no more than 2" thick) and can be reproduced as a poster. We will be displaying the works and are asking for permission to have the art for up to 1 year to share with the community as a whole.

Artwork must be submitted to the RSN offices between March 17th and 31st. There will be a public viewing of all entries at the Center for Community Health on April 8th from noon to 3 pm.

Six prizes will be awarded ranging in size from \$100 to \$225! The winning entries will be unveiled at the April Mental Health Advisory Board meeting, April 30th, as an introduction to Mental Health Recovery Awareness month in May. In addition, the winning poster will be reproduced for distribution throughout our community and our state in an effort to educate others about recovery.

Contest rules and entry forms are available in the CVAB office and may also be found on the Clark County web site at

<http://www.clark.wa.gov/mental-health/recovery/index.html>

If you have questions about the contest, please call Pat Roe or Melanie Green at the Department of Community Services at 360-397-2130.

CONFERENCE SCHEDULED

*Challenges in care giving: Giving Care,
Taking Care"*



Challenges in Care giving: Giving Care, Taking Care, a caregiver training conference will be offered on Monday, June 2, 2008 at the Tukwila Community Center in Tukwila, Washington. The event is sponsored by Aging and Disability Services Administration and Elder Health Northwest, along with the support of numerous community organizations.

The conference is designed to provide current, practical skills and resources that community caregivers can use in their daily care giving responsibilities. The conference is intended for:

- Family caregivers (spouses, adult children, parents of adults with disabilities, or other relatives)
- In-home caregivers (home care aides, individual providers)
- Adult Family Home Providers
- Adult Day Care or Assisted Living facility staff
- Geriatric mental health service workers

The Early Registration fee (by May 19) for individual caregivers is \$25. They include family members, individual COPES and chore providers. Scholarships are available for unpaid family caregivers.

The Early Registration fee for agency-based caregivers is \$50. Fees include workshops, lunch and resource exhibits.

Registration forms will be available in April and space is limited - so don't delay!

For more information or to receive a full brochure and registration materials, please call 1-800-422-3263 or 360-725-2544.

NAMI Experience
the Revolution
★ ★ ★ ★ ★ **JOIN TODAY!**

MEMBERSHIP DUES

ANNUAL DUES - \$35.00

DONATION \$ _____

No one is refused membership due to economic hardship. Some scholarships are available.

★ We are a registered non-profit organization 501(C)(3) and donations are tax deductible.

Name: _____

Address: _____

City: _____

State & Zip: _____

Phone: (____) _____

E-Mail: _____

Membership Includes:

- ★ NAMI National Advocate Magazine, Quarterly
- ★ NAMI Washington Friday Facts, weekly e-mail by request
- ★ NAMI Clark County Newsletter, bi-monthly

Please return your payment and completed form to:

NAMI Clark County
P.O. Box 5353
Vancouver, WA 98668



NAMI - CLARK COUNTY

Affiliate of the National Alliance on Mental Illness
The Nation's Voice on Mental Illness



"Our mission is to improve the quality of life for all those struggling with and affected by brain disorders; people with a psychiatric condition, family members, mental health professionals, and concerned citizens. Our goal is to support, educate, advocate, promote recovery, encourage research, and political advocacy."

Office Info

Office & Library

Hours:

Monday – Thursday
11:00 am– 2:00 pm
(closed on holidays)

Phone:

(360) 695-2823

Fax:

(360) 823-1088

Physical Address

317 East 39th Street
(SW corner of 39th
& Main Street)

Mailing Address:

PO Box 5353
Vancouver, WA
98668

Website:

www.nami-clark.com



2008

COMING EVENTS

March 11 (2nd Tuesday)

Education Meeting: 7:00-8:30pm

**Meet NAMI Clark County
Executive Director
Janice McKenzie**

GUEST SPEAKERS

Vanessa R. Gaston, Director
Melanie Green, Peer Support Specialist
Pat Roe, Family Support Specialist
Department of Community Services

Don't miss this opportunity to learn about the broad range of services available to you and your family plus exciting changes to come.

April 8 (2nd Tuesday)

Education Meeting: 7:00-8:30pm

**Guest Speaker: Mary Jadwisiak
Youth Suicide Prevention Program**

Mary will share important information regarding her program services and some helpful guidelines for you and your loved ones.

**March 18 & April 16 (3rd Tuesdays)
Monthly Family Support Group**

Board of Directors

Officers

President: Don Greenwood
Vice Pres.: Harley Sell
Secretary: Michele Wollert

Directors

Chriss Denny
Michael Mattox
Linda Phelan
Nancy Shafton
Loretta Walsh
Lennie Campbell
Nealane Riem

You Are Invited

Community Family Support Group

2nd Wednesday each Month
7:00 to 8:30 PM

Co-Sponsored by
NAMI-Clark County
And

Southwest Washington Medical
Center Behavioral Health Services:
ADAPT

(Awareness Directed Activities for
Personal Transformation)

SWMC Memorial Campus
3400 Main Street, Vancouver
ADAPT Living Room, 3rd Floor

Questions

NAMI-Clark County
Don Greenwood-571-5871

ADAPT:

Nancy Gierut-Wicker -696-5300

Monthly Meetings

Education Meeting

2nd Tuesday
6:45-8:30 p.m.

Family Support Group

3rd Tuesday
7-8:30 p.m.

Depression Bipolar Support Alliance Group

3rd Thursday
7-9:00 p.m.



***A Word from President
Don Greenwood***



NAMI-Clark County has its first ever full-time Executive Director! Let us rejoice and be grateful! On Wednesday night, February 20, your board of directors chose Janice McKenzie of Aloha, Oregon to fill the position made possible by a grant from the Clark County Regional Support Network.

Janice previously was the National Support Groups and Volunteer Services Manager of the National Psoriasis Foundation, headquartered in Portland. Before that, she was the Manager of Volunteer Services for the Medical Teams International organization in Portland.

Janice has also worked extensively in church related positions, as the Ministering Arts Manager of Beaverton Christian Church and volunteered as the Administrator – Children’s Education Ministry in area Churches of Christ.

I hope each of you will call or drop by our NAMI Office to welcome Janice, and support her in her new position.

The first months she is with us, will be a time of orientation and learning for Janice. I will be introducing her to the leaders and personnel of Clark County agencies that serve mental health consumers and their families. She will be learning about our programs and offerings to the community. If you as a member of NAMI are close to agency leaders or community leaders, please set up a time to introduce them to our Executive Director. Or, just drop by the office and ask Janice how you can help and support her.

We cannot expect Janice to “do it all” for NAMI-Clark County. We cannot think, “Well now that we have an Executive Director, she can take care of all that needs to be done.” One of her primary responsibilities, for which she is so well suited, is to recruit and train volunteers. We need much more participation from our membership, so be thinking in which area your talents fit.

I rather often hear NAMI members bemoan the fact that we as an organization are not doing more in this area or that. I don’t understand how those who complain can expect so much from such a small core of volunteers. I feel like asking those who wish we would do more, “What then are you going to do about it?”

“What then are you, NAMI of Clark Members, going to do to further support our mission?”

In the generation since we of NAMI began our work here in Clark County, the population has tripled! We can no longer sit back and wait or hope people will find us and come to us for help. Let us come together around Janice McKenzie, and move towards fulfillment of our mission, which is, “to improve the quality of life for all those struggling with and affected by brain disorders; people with a psychiatric condition, family members, mental health professionals, and concerned citizens.”

Let each one of us join together to better achieve our goal, which is, “to support, educate, advocate, promote recovery, encourage research and political advocacy.”

Sincerely yours,

Don Greenwood

Don Greenwood, President
NAMI-Clark County

Meet
Janice McKenzie
NAMI Clark County Executive Director



Janice McKenzie comes to **NAMI Clark County** with over 15 years experience managing volunteer based programs in non-profit environments. Most recently, she developed a national support group program for the National Psoriasis Foundation and implemented a successful grassroots volunteer program. One of the strengths that Janice brings to **NAMI Clark County** is her ability to develop working partnerships.

Janice is drawn to serve with **NAMI** because of family members who are clients and the loss of a close friend with BPD to suicide. Janice was a support person for her friend and experienced common issues such as lack of housing, access to treatment, compliance and financial obstacles. As the new Executive Director, she is committed to working for the people of Clark County and building awareness, understanding and resources for clients and their families.

**DEPARTMENT OF COMMUNITY SERVICES LAUNCHES
WEBSITE AS RESOURCE FOR SERVICES**



Network of Care for Behavioral Health & Community Services

For a comprehensive listing of resources and news visit www.clark.wa.networkofcare.org

This Web site is a resource for individuals, families and agencies concerned with mental health, substance abuse, developmental disabilities, public health, and weatherization and housing. It provides information about laws and related news, as well as communication tools and other features. Regardless of where you begin your search, the Network of Care helps you find what you need - it helps ensure that there is "No Wrong Door" for those who need services. This Web site can greatly assist in our efforts to protect our greatest human asset - our beautiful minds.

In addition the link to "Calendars" will take you to "Community Calendars" where NAMI-Clark County regular programs and future programs will now be listed.

What if NAMI Clark County had a penny for every time you searched the Internet?

GoodSearch

You Search or Shop...
We Give!

Search the web with www.goodsearch.com and money from Yahoo advertisers will go to NAMI Clark County without you spending a dime!

Promoted by Oprah, the NY times, and Wall Street Journal, this is a fun and easy way to help NAMI Clark County earn funds. Go to www.goodsearch.com, and enter "NAMI Clark County" in the charity box. It's that simple!

A word from Department of Community Services



VISIONS OF RECOVERY POSTER CONTEST

The Clark County Regional Support Network, as part of an ongoing effort to promote mental health recovery and reduce the stigma associated with mental illness, is hosting the Visions of Recover Poster Contest.

We are inviting everyone who has received public mental health services in Clark County, and/or family members of recipients, to submit art that reflects their vision of what recovery means to them. We are looking for paintings or drawings, collages (using works that do not include copyrighted materials), original photography, and/or wall hangings that meet the size requirements (18" x 24" and no more than 2" thick) and can be reproduced as a poster. We will be displaying the works and are asking for permission to have the art for up to 1 year to share with the community as a whole.

Artwork must be submitted to the RSN offices between March 17th and 31st. There will be a public viewing of all entries at the Center for Community Health on April 8th from noon to 3 pm.

Six prizes will be awarded ranging in size from \$100 to \$225! The winning entries will be unveiled at the April Mental Health Advisory Board meeting, April 30th, as an introduction to Mental Health Recovery Awareness month in May. In addition, the winning poster will be reproduced for distribution throughout our community and our state in an effort to educate others about recovery.

Contest rules and entry forms are available in the CVAB office and may also be found on the Clark County web site at

<http://www.clark.wa.gov/mental-health/recovery/index.html>

If you have questions about the contest, please call Pat Roe or Melanie Green at the Department of Community Services at 360-397-2130.

CONFERENCE SCHEDULED

*Challenges in care giving: Giving Care,
Taking Care"*



Challenges in Care giving: Giving Care, Taking Care, a caregiver training conference will be offered on Monday, June 2, 2008 at the Tukwila Community Center in Tukwila, Washington. The event is sponsored by Aging and Disability Services Administration and Elder Health Northwest, along with the support of numerous community organizations.

The conference is designed to provide current, practical skills and resources that community caregivers can use in their daily care giving responsibilities. The conference is intended for:

- Family caregivers (spouses, adult children, parents of adults with disabilities, or other relatives)
- In-home caregivers (home care aides, individual providers)
- Adult Family Home Providers
- Adult Day Care or Assisted Living facility staff
- Geriatric mental health service workers

The Early Registration fee (by May 19) for individual caregivers is \$25. They include family members, individual COPES and chore providers. Scholarships are available for unpaid family caregivers.

The Early Registration fee for agency-based caregivers is \$50. Fees include workshops, lunch and resource exhibits.

Registration forms will be available in April and space is limited - so don't delay!

For more information or to receive a full brochure and registration materials, please call 1-800-422-3263 or 360-725-2544.

NAMI Experience
the Revolution
★★★★★ **JOIN TODAY!**

MEMBERSHIP DUES

ANNUAL DUES - **\$35.00**

DONATION \$ _____

No one is refused membership due to economic hardship. Some scholarships are available.

★ We are a registered non-profit organization 501(C)(3) and donations are tax deductible.

Name: _____

Address: _____

City: _____

State & Zip: _____

Phone: (____) _____

E-Mail: _____

Membership Includes:

- ★ NAMI National Advocate Magazine, Quarterly
- ★ NAMI Washington Friday Facts, weekly e-mail by request
- ★ NAMI Clark County Newsletter, bi-monthly

Please return your payment and completed form to:

NAMI Clark County
P.O. Box 5353
Vancouver, WA 98668



NAMI - CLARK COUNTY

Affiliate of the National Alliance on Mental Illness
The Nation's Voice on Mental Illness



"Our mission is to improve the quality of life for all those struggling with and affected by brain disorders; people with a psychiatric condition, family members, mental health professionals, and concerned citizens. Our goal is to support, educate, advocate, promote recovery, encourage research, and political advocacy."

Office Info

Office & Library

Hours:

Monday – Thursday
11:00 am– 2:00 pm
(closed on holidays)

Phone:

(360) 695-2823

Fax:

(360) 823-1088

Physical Address

317 East 39th Street
(SW corner of 39th
& Main Street)

Mailing Address:

PO Box 5353
Vancouver, WA
98668

Website:

www.nami-clark.com



2008

COMING EVENTS

March 11 (2nd Tuesday)

Education Meeting: 7:00-8:30pm

**Meet NAMI Clark County
Executive Director
Janice McKenzie**

GUEST SPEAKERS

Vanessa R. Gaston, Director
Melanie Green, Peer Support Specialist
Pat Roe, Family Support Specialist
Department of Community Services

Don't miss this opportunity to learn about the broad range of services available to you and your family plus exciting changes to come.

April 8 (2nd Tuesday)

Education Meeting: 7:00-8:30pm

**Guest Speaker: Mary Jadwisiak
Youth Suicide Prevention Program**

Mary will share important information regarding her program services and some helpful guidelines for you and your loved ones.

**March 18 & April 16 (3rd Tuesdays)
Monthly Family Support Group**

Board of Directors

Officers

President: Don Greenwood
Vice Pres.: Harley Sell
Secretary: Michele Wollert

Directors

Chriss Denny
Michael Mattox
Linda Phelan
Nancy Shafton
Loretta Walsh
Lennie Campbell
Nealane Riem

You Are Invited

Community Family Support Group

2nd Wednesday each Month
7:00 to 8:30 PM

Co-Sponsored by
NAMI-Clark County
And

Southwest Washington Medical
Center Behavioral Health Services:
ADAPT

(Awareness Directed Activities for
Personal Transformation)

SWMC Memorial Campus
3400 Main Street, Vancouver
ADAPT Living Room, 3rd Floor

Questions

NAMI-Clark County
Don Greenwood-571-5871

ADAPT:

Nancy Gierut-Wicker -696-5300

Monthly Meetings

Education Meeting

2nd Tuesday
6:45-8:30 p.m.

Family Support Group

3rd Tuesday
7-8:30 p.m.

Depression Bipolar Support Alliance Group

3rd Thursday
7-9:00 p.m.



A Word from President Don Greenwood



NAMI-Clark County has its first ever full-time Executive Director! Let us rejoice and be grateful! On Wednesday night, February 20, your board of directors chose Janice McKenzie of Aloha, Oregon to fill the position made possible by a grant from the Clark County Regional Support Network.

Janice previously was the National Support Groups and Volunteer Services Manager of the National Psoriasis Foundation, headquartered in Portland. Before that, she was the Manager of Volunteer Services for the Medical Teams International organization in Portland.

Janice has also worked extensively in church related positions, as the Ministering Arts Manager of Beaverton Christian Church and volunteered as the Administrator – Children’s Education Ministry in area Churches of Christ.

I hope each of you will call or drop by our NAMI Office to welcome Janice, and support her in her new position.

The first months she is with us, will be a time of orientation and learning for Janice. I will be introducing her to the leaders and personnel of Clark County agencies that serve mental health consumers and their families. She will be learning about our programs and offerings to the community. If you as a member of NAMI are close to agency leaders or community leaders, please set up a time to introduce them to our Executive Director. Or, just drop by the office and ask Janice how you can help and support her.

We cannot expect Janice to “do it all” for NAMI-Clark County. We cannot think, “Well now that we have an Executive Director, she can take care of all that needs to be done.” One of her primary responsibilities, for which she is so well suited, is to recruit and train volunteers. We need much more participation from our membership, so be thinking in which area your talents fit.

I rather often hear NAMI members bemoan the fact that we as an organization are not doing more in this area or that. I don’t understand how those who complain can expect so much from such a small core of volunteers. I feel like asking those who wish we would do more, “What then are you going to do about it?”

“What then are you, NAMI of Clark Members, going to do to further support our mission?”

In the generation since we of NAMI began our work here in Clark County, the population has tripled! We can no longer sit back and wait or hope people will find us and come to us for help. Let us come together around Janice McKenzie, and move towards fulfillment of our mission, which is, “to improve the quality of life for all those struggling with and affected by brain disorders; people with a psychiatric condition, family members, mental health professionals, and concerned citizens.”

Let each one of us join together to better achieve our goal, which is, “to support, educate, advocate, promote recovery, encourage research and political advocacy.”

Sincerely yours,

Don Greenwood

Don Greenwood, President
NAMI-Clark County

Meet
Janice McKenzie
NAMI Clark County Executive Director



Janice McKenzie comes to **NAMI Clark County** with over 15 years experience managing volunteer based programs in non-profit environments. Most recently, she developed a national support group program for the National Psoriasis Foundation and implemented a successful grassroots volunteer program. One of the strengths that Janice brings to **NAMI Clark County** is her ability to develop working partnerships.

Janice is drawn to serve with **NAMI** because of family members who are clients and the loss of a close friend with BPD to suicide. Janice was a support person for her friend and experienced common issues such as lack of housing, access to treatment, compliance and financial obstacles. As the new Executive Director, she is committed to working for the people of Clark County and building awareness, understanding and resources for clients and their families.

**DEPARTMENT OF COMMUNITY SERVICES LAUNCHES
WEBSITE AS RESOURCE FOR SERVICES**



Network of Care for Behavioral Health & Community Services

For a comprehensive listing of resources and news visit www.clark.wa.networkofcare.org

This Web site is a resource for individuals, families and agencies concerned with mental health, substance abuse, developmental disabilities, public health, and weatherization and housing. It provides information about laws and related news, as well as communication tools and other features. Regardless of where you begin your search, the Network of Care helps you find what you need - it helps ensure that there is "No Wrong Door" for those who need services. This Web site can greatly assist in our efforts to protect our greatest human asset - our beautiful minds.

In addition the link to "Calendars" will take you to "Community Calendars" where NAMI-Clark County regular programs and future programs will now be listed.

What if NAMI Clark County had a penny for every time you searched the Internet?

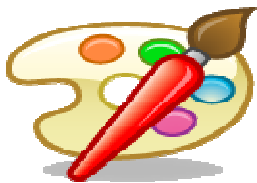
GoodSearch

You Search or Shop...
We Give!

Search the web with www.goodsearch.com and money from Yahoo advertisers will go to NAMI Clark County without you spending a dime!

Promoted by Oprah, the NY times, and Wall Street Journal, this is a fun and easy way to help NAMI Clark County earn funds. Go to www.goodsearch.com, and enter "NAMI Clark County" in the charity box. It's that simple!

A word from Department of Community Services



VISIONS OF RECOVERY POSTER CONTEST

The Clark County Regional Support Network, as part of an ongoing effort to promote mental health recovery and reduce the stigma associated with mental illness, is hosting the Visions of Recover Poster Contest.

We are inviting everyone who has received public mental health services in Clark County, and/or family members of recipients, to submit art that reflects their vision of what recovery means to them. We are looking for paintings or drawings, collages (using works that do not include copyrighted materials), original photography, and/or wall hangings that meet the size requirements (18" x 24" and no more than 2" thick) and can be reproduced as a poster. We will be displaying the works and are asking for permission to have the art for up to 1 year to share with the community as a whole.

Artwork must be submitted to the RSN offices between March 17th and 31st. There will be a public viewing of all entries at the Center for Community Health on April 8th from noon to 3 pm.

Six prizes will be awarded ranging in size from \$100 to \$225! The winning entries will be unveiled at the April Mental Health Advisory Board meeting, April 30th, as an introduction to Mental Health Recovery Awareness month in May. In addition, the winning poster will be reproduced for distribution throughout our community and our state in an effort to educate others about recovery.

Contest rules and entry forms are available in the CVAB office and may also be found on the Clark County web site at

<http://www.clark.wa.gov/mental-health/recovery/index.html>

If you have questions about the contest, please call Pat Roe or Melanie Green at the Department of Community Services at 360-397-2130.

CONFERENCE SCHEDULED

Challenges in care giving: Giving Care, Taking Care"



Challenges in Care giving: Giving Care, Taking Care, a caregiver training conference will be offered on Monday, June 2, 2008 at the Tukwila Community Center in Tukwila, Washington. The event is sponsored by Aging and Disability Services Administration and Elder Health Northwest, along with the support of numerous community organizations.

The conference is designed to provide current, practical skills and resources that community caregivers can use in their daily care giving responsibilities. The conference is intended for:

- Family caregivers (spouses, adult children, parents of adults with disabilities, or other relatives)
- In-home caregivers (home care aides, individual providers)
- Adult Family Home Providers
- Adult Day Care or Assisted Living facility staff
- Geriatric mental health service workers

The Early Registration fee (by May 19) for individual caregivers is \$25. They include family members, individual COPES and chore providers. Scholarships are available for unpaid family caregivers.

The Early Registration fee for agency-based caregivers is \$50. Fees include workshops, lunch and resource exhibits.

Registration forms will be available in April and space is limited - so don't delay!

For more information or to receive a full brochure and registration materials, please call 1-800-422-3263 or 360-725-2544.



MEMBERSHIP DUES

ANNUAL DUES - \$35.00

DONATION \$ _____

No one is refused membership due to economic hardship. Some scholarships are available.

★ We are a registered non-profit organization 501(C)(3) and donations are tax deductible.

Name: _____

Address: _____

City: _____

State & Zip: _____

Phone: (____) _____

E-Mail: _____

Membership Includes:

- ★ NAMI National Advocate Magazine, Quarterly
- ★ NAMI Washington Friday Facts, weekly e-mail by request
- ★ NAMI Clark County Newsletter, bi-monthly

Please return your payment and completed form to:

NAMI Clark County
P.O. Box 5353
Vancouver, WA 98668



NAMI - CLARK COUNTY

Affiliate of the National Alliance on Mental Illness
The Nation's Voice on Mental Illness



"Our mission is to improve the quality of life for all those struggling with and affected by brain disorders; people with a psychiatric condition, family members, mental health professionals, and concerned citizens. Our goal is to support, educate, advocate, promote recovery, encourage research, and political advocacy."

Office Info

Office & Library

Hours:

Monday – Thursday
11:00 am– 2:00 pm
(closed on holidays)

Phone:

(360) 695-2823

Fax:

(360) 823-1088

Physical Address

317 East 39th Street
(SW corner of 39th
& Main Street)

Mailing Address:

PO Box 5353
Vancouver, WA
98668

Website:

www.nami-clark.com



2008

COMING EVENTS

March 11 (2nd Tuesday)

Education Meeting: 7:00-8:30pm

**Meet NAMI Clark County
Executive Director
Janice McKenzie**

GUEST SPEAKERS

Vanessa R. Gaston, Director
Melanie Green, Peer Support Specialist
Pat Roe, Family Support Specialist
Department of Community Services

Don't miss this opportunity to learn about the broad range of services available to you and your family plus exciting changes to come.

April 8 (2nd Tuesday)

Education Meeting: 7:00-8:30pm

**Guest Speaker: Mary Jadwisiak
Youth Suicide Prevention Program**

Mary will share important information regarding her program services and some helpful guidelines for you and your loved ones.

**March 18 & April 16 (3rd Tuesdays)
Monthly Family Support Group**

Board of Directors

Officers

President: Don Greenwood
Vice Pres.: Harley Sell
Secretary: Michele Wollert

Directors

Chriss Denny
Michael Mattox
Linda Phelan
Nancy Shafton
Loretta Walsh
Lennie Campbell
Nealane Riem

You Are Invited

Community Family Support Group

2nd Wednesday each Month
7:00 to 8:30 PM

Co-Sponsored by
NAMI-Clark County
And

Southwest Washington Medical
Center Behavioral Health Services:
ADAPT

(Awareness Directed Activities for
Personal Transformation)

SWMC Memorial Campus
3400 Main Street, Vancouver
ADAPT Living Room, 3rd Floor

Questions

NAMI-Clark County
Don Greenwood-571-5871

ADAPT:

Nancy Gierut-Wicker -696-5300

Monthly Meetings

Education Meeting

2nd Tuesday
6:45-8:30 p.m.

Family Support Group

3rd Tuesday
7-8:30 p.m.

Depression Bipolar Support Alliance Group

3rd Thursday
7-9:00 p.m.



***A Word from President
Don Greenwood***



NAMI-Clark County has its first ever full-time Executive Director! Let us rejoice and be grateful! On Wednesday night, February 20, your board of directors chose Janice McKenzie of Aloha, Oregon to fill the position made possible by a grant from the Clark County Regional Support Network.

Janice previously was the National Support Groups and Volunteer Services Manager of the National Psoriasis Foundation, headquartered in Portland. Before that, she was the Manager of Volunteer Services for the Medical Teams International organization in Portland.

Janice has also worked extensively in church related positions, as the Ministering Arts Manager of Beaverton Christian Church and volunteered as the Administrator – Children’s Education Ministry in area Churches of Christ.

I hope each of you will call or drop by our NAMI Office to welcome Janice, and support her in her new position.

The first months she is with us, will be a time of orientation and learning for Janice. I will be introducing her to the leaders and personnel of Clark County agencies that serve mental health consumers and their families. She will be learning about our programs and offerings to the community. If you as a member of NAMI are close to agency leaders or community leaders, please set up a time to introduce them to our Executive Director. Or, just drop by the office and ask Janice how you can help and support her.

We cannot expect Janice to “do it all” for NAMI-Clark County. We cannot think, “Well now that we have an Executive Director, she can take care of all that needs to be done.” One of her primary responsibilities, for which she is so well suited, is to recruit and train volunteers. We need much more participation from our membership, so be thinking in which area your talents fit.

I rather often hear NAMI members bemoan the fact that we as an organization are not doing more in this area or that. I don’t understand how those who complain can expect so much from such a small core of volunteers. I feel like asking those who wish we would do more, “What then are you going to do about it?”

“What then are you, NAMI of Clark Members, going to do to further support our mission?”

In the generation since we of NAMI began our work here in Clark County, the population has tripled! We can no longer sit back and wait or hope people will find us and come to us for help. Let us come together around Janice McKenzie, and move towards fulfillment of our mission, which is, “to improve the quality of life for all those struggling with and affected by brain disorders; people with a psychiatric condition, family members, mental health professionals, and concerned citizens.”

Let each one of us join together to better achieve our goal, which is, “to support, educate, advocate, promote recovery, encourage research and political advocacy.”

Sincerely yours,

Don Greenwood

Don Greenwood, President
NAMI-Clark County

Meet
Janice McKenzie
NAMI Clark County Executive Director



Janice McKenzie comes to **NAMI Clark County** with over 15 years experience managing volunteer based programs in non-profit environments. Most recently, she developed a national support group program for the National Psoriasis Foundation and implemented a successful grassroots volunteer program. One of the strengths that Janice brings to **NAMI Clark County** is her ability to develop working partnerships.

Janice is drawn to serve with **NAMI** because of family members who are clients and the loss of a close friend with BPD to suicide. Janice was a support person for her friend and experienced common issues such as lack of housing, access to treatment, compliance and financial obstacles. As the new Executive Director, she is committed to working for the people of Clark County and building awareness, understanding and resources for clients and their families.

**DEPARTMENT OF COMMUNITY SERVICES LAUNCHES
WEBSITE AS RESOURCE FOR SERVICES**



Network of Care for Behavioral Health & Community Services

For a comprehensive listing of resources and news visit www.clark.wa.networkofcare.org

This Web site is a resource for individuals, families and agencies concerned with mental health, substance abuse, developmental disabilities, public health, and weatherization and housing. It provides information about laws and related news, as well as communication tools and other features. Regardless of where you begin your search, the Network of Care helps you find what you need - it helps ensure that there is "No Wrong Door" for those who need services. This Web site can greatly assist in our efforts to protect our greatest human asset - our beautiful minds.

In addition the link to "Calendars" will take you to "Community Calendars" where NAMI-Clark County regular programs and future programs will now be listed.

What if NAMI Clark County had a penny for every time you searched the Internet?

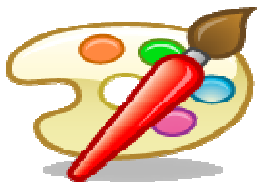
GoodSearch

You Search or Shop...
We Give!

Search the web with www.goodsearch.com and money from Yahoo advertisers will go to NAMI Clark County without you spending a dime!

Promoted by Oprah, the NY times, and Wall Street Journal, this is a fun and easy way to help NAMI Clark County earn funds. Go to www.goodsearch.com, and enter "NAMI Clark County" in the charity box. It's that simple!

A word from Department of Community Services



VISIONS OF RECOVERY POSTER CONTEST

The Clark County Regional Support Network, as part of an ongoing effort to promote mental health recovery and reduce the stigma associated with mental illness, is hosting the Visions of Recover Poster Contest.

We are inviting everyone who has received public mental health services in Clark County, and/or family members of recipients, to submit art that reflects their vision of what recovery means to them. We are looking for paintings or drawings, collages (using works that do not include copyrighted materials), original photography, and/or wall hangings that meet the size requirements (18" x 24" and no more than 2" thick) and can be reproduced as a poster. We will be displaying the works and are asking for permission to have the art for up to 1 year to share with the community as a whole.

Artwork must be submitted to the RSN offices between March 17th and 31st. There will be a public viewing of all entries at the Center for Community Health on April 8th from noon to 3 pm.

Six prizes will be awarded ranging in size from \$100 to \$225! The winning entries will be unveiled at the April Mental Health Advisory Board meeting, April 30th, as an introduction to Mental Health Recovery Awareness month in May. In addition, the winning poster will be reproduced for distribution throughout our community and our state in an effort to educate others about recovery.

Contest rules and entry forms are available in the CVAB office and may also be found on the Clark County web site at

<http://www.clark.wa.gov/mental-health/recovery/index.html>

If you have questions about the contest, please call Pat Roe or Melanie Green at the Department of Community Services at 360-397-2130.

CONFERENCE SCHEDULED

*Challenges in care giving: Giving Care,
Taking Care"*



Challenges in Care giving: Giving Care, Taking Care, a caregiver training conference will be offered on Monday, June 2, 2008 at the Tukwila Community Center in Tukwila, Washington. The event is sponsored by Aging and Disability Services Administration and Elder Health Northwest, along with the support of numerous community organizations.

The conference is designed to provide current, practical skills and resources that community caregivers can use in their daily care giving responsibilities. The conference is intended for:

- Family caregivers (spouses, adult children, parents of adults with disabilities, or other relatives)
- In-home caregivers (home care aides, individual providers)
- Adult Family Home Providers
- Adult Day Care or Assisted Living facility staff
- Geriatric mental health service workers

The Early Registration fee (by May 19) for individual caregivers is \$25. They include family members, individual COPES and chore providers. Scholarships are available for unpaid family caregivers.

The Early Registration fee for agency-based caregivers is \$50. Fees include workshops, lunch and resource exhibits.

Registration forms will be available in April and space is limited - so don't delay!

For more information or to receive a full brochure and registration materials, please call 1-800-422-3263 or 360-725-2544.



MEMBERSHIP DUES

ANNUAL DUES - \$35.00

DONATION \$ _____

No one is refused membership due to economic hardship. Some scholarships are available.

★ We are a registered non-profit organization 501(C)(3) and donations are tax deductible.

Name: _____

Address: _____

City: _____

State & Zip: _____

Phone: (____) _____

E-Mail: _____

Membership Includes:

- ★ NAMI National Advocate Magazine, Quarterly
- ★ NAMI Washington Friday Facts, weekly e-mail by request
- ★ NAMI Clark County Newsletter, bi-monthly

Please return your payment and completed form to:

NAMI Clark County
P.O. Box 5353
Vancouver, WA 98668



NAMI - CLARK COUNTY

Affiliate of the National Alliance on Mental Illness
The Nation's Voice on Mental Illness



"Our mission is to improve the quality of life for all those struggling with and affected by brain disorders; people with a psychiatric condition, family members, mental health professionals, and concerned citizens. Our goal is to support, educate, advocate, promote recovery, encourage research, and political advocacy."

Office Info

Office & Library

Hours:

Monday – Thursday
11:00 am– 2:00 pm
(closed on holidays)

Phone:

(360) 695-2823

Fax:

(360) 823-1088

Physical Address

317 East 39th Street
(SW corner of 39th
& Main Street)

Mailing Address:

PO Box 5353
Vancouver, WA
98668

Website:

www.nami-clark.com



2008

COMING EVENTS

March 11 (2nd Tuesday)

Education Meeting: 7:00-8:30pm

**Meet NAMI Clark County
Executive Director
Janice McKenzie**

GUEST SPEAKERS

Vanessa R. Gaston, Director
Melanie Green, Peer Support Specialist
Pat Roe, Family Support Specialist
Department of Community Services

Don't miss this opportunity to learn about the broad range of services available to you and your family plus exciting changes to come.

April 8 (2nd Tuesday)

Education Meeting: 7:00-8:30pm

**Guest Speaker: Mary Jadwisiak
Youth Suicide Prevention Program**

Mary will share important information regarding her program services and some helpful guidelines for you and your loved ones.

**March 18 & April 16 (3rd Tuesdays)
Monthly Family Support Group**

Board of Directors

Officers

President: Don Greenwood
Vice Pres.: Harley Sell
Secretary: Michele Wollert

Directors

Chriss Denny
Michael Mattox
Linda Phelan
Nancy Shafton
Loretta Walsh
Lennie Campbell
Nealane Riem

You Are Invited

Community Family Support Group

2nd Wednesday each Month
7:00 to 8:30 PM

Co-Sponsored by
NAMI-Clark County
And

Southwest Washington Medical
Center Behavioral Health Services:
ADAPT

(Awareness Directed Activities for
Personal Transformation)

SWMC Memorial Campus
3400 Main Street, Vancouver
ADAPT Living Room, 3rd Floor

Questions

NAMI-Clark County
Don Greenwood-571-5871

ADAPT:

Nancy Gierut-Wicker -696-5300

Monthly Meetings

Education Meeting

2nd Tuesday
6:45-8:30 p.m.

Family Support Group

3rd Tuesday
7-8:30 p.m.

Depression Bipolar Support Alliance Group

3rd Thursday
7-9:00 p.m.



***A Word from President
Don Greenwood***



NAMI-Clark County has its first ever full-time Executive Director! Let us rejoice and be grateful! On Wednesday night, February 20, your board of directors chose Janice McKenzie of Aloha, Oregon to fill the position made possible by a grant from the Clark County Regional Support Network.

Janice previously was the National Support Groups and Volunteer Services Manager of the National Psoriasis Foundation, headquartered in Portland. Before that, she was the Manager of Volunteer Services for the Medical Teams International organization in Portland.

Janice has also worked extensively in church related positions, as the Ministering Arts Manager of Beaverton Christian Church and volunteered as the Administrator – Children’s Education Ministry in area Churches of Christ.

I hope each of you will call or drop by our NAMI Office to welcome Janice, and support her in her new position.

The first months she is with us, will be a time of orientation and learning for Janice. I will be introducing her to the leaders and personnel of Clark County agencies that serve mental health consumers and their families. She will be learning about our programs and offerings to the community. If you as a member of NAMI are close to agency leaders or community leaders, please set up a time to introduce them to our Executive Director. Or, just drop by the office and ask Janice how you can help and support her.

We cannot expect Janice to “do it all” for NAMI-Clark County. We cannot think, “Well now that we have an Executive Director, she can take care of all that needs to be done.” One of her primary responsibilities, for which she is so well suited, is to recruit and train volunteers. We need much more participation from our membership, so be thinking in which area your talents fit.

I rather often hear NAMI members bemoan the fact that we as an organization are not doing more in this area or that. I don’t understand how those who complain can expect so much from such a small core of volunteers. I feel like asking those who wish we would do more, “What then are you going to do about it?”

“What then are you, NAMI of Clark Members, going to do to further support our mission?”

In the generation since we of NAMI began our work here in Clark County, the population has tripled! We can no longer sit back and wait or hope people will find us and come to us for help. Let us come together around Janice McKenzie, and move towards fulfillment of our mission, which is, “to improve the quality of life for all those struggling with and affected by brain disorders; people with a psychiatric condition, family members, mental health professionals, and concerned citizens.”

Let each one of us join together to better achieve our goal, which is, “to support, educate, advocate, promote recovery, encourage research and political advocacy.”

Sincerely yours,

Don Greenwood

Don Greenwood, President
NAMI-Clark County

Meet
Janice McKenzie
NAMI Clark County Executive Director



Janice McKenzie comes to **NAMI Clark County** with over 15 years experience managing volunteer based programs in non-profit environments. Most recently, she developed a national support group program for the National Psoriasis Foundation and implemented a successful grassroots volunteer program. One of the strengths that Janice brings to **NAMI Clark County** is her ability to develop working partnerships.

Janice is drawn to serve with **NAMI** because of family members who are clients and the loss of a close friend with BPD to suicide. Janice was a support person for her friend and experienced common issues such as lack of housing, access to treatment, compliance and financial obstacles. As the new Executive Director, she is committed to working for the people of Clark County and building awareness, understanding and resources for clients and their families.

**DEPARTMENT OF COMMUNITY SERVICES LAUNCHES
WEBSITE AS RESOURCE FOR SERVICES**



Network of Care for Behavioral Health & Community Services

For a comprehensive listing of resources and news visit www.clark.wa.networkofcare.org

This Web site is a resource for individuals, families and agencies concerned with mental health, substance abuse, developmental disabilities, public health, and weatherization and housing. It provides information about laws and related news, as well as communication tools and other features. Regardless of where you begin your search, the Network of Care helps you find what you need - it helps ensure that there is "No Wrong Door" for those who need services. This Web site can greatly assist in our efforts to protect our greatest human asset - our beautiful minds.

In addition the link to "Calendars" will take you to "Community Calendars" where NAMI-Clark County regular programs and future programs will now be listed.

What if NAMI Clark County had a penny for every time you searched the Internet?

GoodSearch

You Search or Shop...
We Give!

Search the web with www.goodsearch.com and money from Yahoo advertisers will go to NAMI Clark County without you spending a dime!

Promoted by Oprah, the NY times, and Wall Street Journal, this is a fun and easy way to help NAMI Clark County earn funds. Go to www.goodsearch.com, and enter "NAMI Clark County" in the charity box. It's that simple!

A word from Department of Community Services



VISIONS OF RECOVERY POSTER CONTEST

The Clark County Regional Support Network, as part of an ongoing effort to promote mental health recovery and reduce the stigma associated with mental illness, is hosting the Visions of Recover Poster Contest.

We are inviting everyone who has received public mental health services in Clark County, and/or family members of recipients, to submit art that reflects their vision of what recovery means to them. We are looking for paintings or drawings, collages (using works that do not include copyrighted materials), original photography, and/or wall hangings that meet the size requirements (18" x 24" and no more than 2" thick) and can be reproduced as a poster. We will be displaying the works and are asking for permission to have the art for up to 1 year to share with the community as a whole.

Artwork must be submitted to the RSN offices between March 17th and 31st. There will be a public viewing of all entries at the Center for Community Health on April 8th from noon to 3 pm.

Six prizes will be awarded ranging in size from \$100 to \$225! The winning entries will be unveiled at the April Mental Health Advisory Board meeting, April 30th, as an introduction to Mental Health Recovery Awareness month in May. In addition, the winning poster will be reproduced for distribution throughout our community and our state in an effort to educate others about recovery.

Contest rules and entry forms are available in the CVAB office and may also be found on the Clark County web site at

<http://www.clark.wa.gov/mental-health/recovery/index.html>

If you have questions about the contest, please call Pat Roe or Melanie Green at the Department of Community Services at 360-397-2130.

CONFERENCE SCHEDULED

Challenges in care giving: Giving Care, Taking Care"



Challenges in Care giving: Giving Care, Taking Care, a caregiver training conference will be offered on Monday, June 2, 2008 at the Tukwila Community Center in Tukwila, Washington. The event is sponsored by Aging and Disability Services Administration and Elder Health Northwest, along with the support of numerous community organizations.

The conference is designed to provide current, practical skills and resources that community caregivers can use in their daily care giving responsibilities. The conference is intended for:

- Family caregivers (spouses, adult children, parents of adults with disabilities, or other relatives)
- In-home caregivers (home care aides, individual providers)
- Adult Family Home Providers
- Adult Day Care or Assisted Living facility staff
- Geriatric mental health service workers

The Early Registration fee (by May 19) for individual caregivers is \$25. They include family members, individual COPES and chore providers. Scholarships are available for unpaid family caregivers.

The Early Registration fee for agency-based caregivers is \$50. Fees include workshops, lunch and resource exhibits.

Registration forms will be available in April and space is limited - so don't delay!

For more information or to receive a full brochure and registration materials, please call 1-800-422-3263 or 360-725-2544.



MEMBERSHIP DUES

ANNUAL DUES - \$35.00

DONATION \$ _____

No one is refused membership due to economic hardship. Some scholarships are available.

★ We are a registered non-profit organization 501(C)(3) and donations are tax deductible.

Name: _____

Address: _____

City: _____

State & Zip: _____

Phone: (____) _____

E-Mail: _____

Membership Includes:

- ★ NAMI National Advocate Magazine, Quarterly
- ★ NAMI Washington Friday Facts, weekly e-mail by request
- ★ NAMI Clark County Newsletter, bi-monthly

Please return your payment and completed form to:

NAMI Clark County
P.O. Box 5353
Vancouver, WA 98668



NAMI - CLARK COUNTY

Affiliate of the National Alliance on Mental Illness
The Nation's Voice on Mental Illness



"Our mission is to improve the quality of life for all those struggling with and affected by brain disorders; people with a psychiatric condition, family members, mental health professionals, and concerned citizens. Our goal is to support, educate, advocate, promote recovery, encourage research, and political advocacy."

Office Info

Office & Library

Hours:

Monday – Thursday
11:00 am– 2:00 pm
(closed on holidays)

Phone:

(360) 695-2823

Fax:

(360) 823-1088

Physical Address

317 East 39th Street
(SW corner of 39th
& Main Street)

Mailing Address:

PO Box 5353
Vancouver, WA
98668

Website:

www.nami-clark.com



2008

COMING EVENTS

March 11 (2nd Tuesday)

Education Meeting: 7:00-8:30pm

**Meet NAMI Clark County
Executive Director
Janice McKenzie**

GUEST SPEAKERS

Vanessa R. Gaston, Director
Melanie Green, Peer Support Specialist
Pat Roe, Family Support Specialist
Department of Community Services

Don't miss this opportunity to learn about the broad range of services available to you and your family plus exciting changes to come.

April 8 (2nd Tuesday)

Education Meeting: 7:00-8:30pm

**Guest Speaker: Mary Jadwisiak
Youth Suicide Prevention Program**

Mary will share important information regarding her program services and some helpful guidelines for you and your loved ones.

**March 18 & April 16 (3rd Tuesdays)
Monthly Family Support Group**

Board of Directors

Officers

President: Don Greenwood
Vice Pres.: Harley Sell
Secretary: Michele Wollert

Directors

Chriss Denny
Michael Mattox
Linda Phelan
Nancy Shafton
Loretta Walsh
Lennie Campbell
Nealane Riem

You Are Invited

Community Family Support Group

2nd Wednesday each Month
7:00 to 8:30 PM

Co-Sponsored by
NAMI-Clark County
And

Southwest Washington Medical
Center Behavioral Health Services:
ADAPT

(Awareness Directed Activities for
Personal Transformation)

SWMC Memorial Campus
3400 Main Street, Vancouver
ADAPT Living Room, 3rd Floor

Questions

NAMI-Clark County
Don Greenwood-571-5871

ADAPT:

Nancy Gierut-Wicker -696-5300

Monthly Meetings

Education Meeting

2nd Tuesday
6:45-8:30 p.m.

Family Support Group

3rd Tuesday
7-8:30 p.m.

Depression Bipolar Support Alliance Group

3rd Thursday
7-9:00 p.m.



***A Word from President
Don Greenwood***



NAMI-Clark County has its first ever full-time Executive Director! Let us rejoice and be grateful! On Wednesday night, February 20, your board of directors chose Janice McKenzie of Aloha, Oregon to fill the position made possible by a grant from the Clark County Regional Support Network.

Janice previously was the National Support Groups and Volunteer Services Manager of the National Psoriasis Foundation, headquartered in Portland. Before that, she was the Manager of Volunteer Services for the Medical Teams International organization in Portland.

Janice has also worked extensively in church related positions, as the Ministering Arts Manager of Beaverton Christian Church and volunteered as the Administrator – Children’s Education Ministry in area Churches of Christ.

I hope each of you will call or drop by our NAMI Office to welcome Janice, and support her in her new position.

The first months she is with us, will be a time of orientation and learning for Janice. I will be introducing her to the leaders and personnel of Clark County agencies that serve mental health consumers and their families. She will be learning about our programs and offerings to the community. If you as a member of NAMI are close to agency leaders or community leaders, please set up a time to introduce them to our Executive Director. Or, just drop by the office and ask Janice how you can help and support her.

We cannot expect Janice to “do it all” for NAMI-Clark County. We cannot think, “Well now that we have an Executive Director, she can take care of all that needs to be done.” One of her primary responsibilities, for which she is so well suited, is to recruit and train volunteers. We need much more participation from our membership, so be thinking in which area your talents fit.

I rather often hear NAMI members bemoan the fact that we as an organization are not doing more in this area or that. I don’t understand how those who complain can expect so much from such a small core of volunteers. I feel like asking those who wish we would do more, “What then are you going to do about it?”

“What then are you, NAMI of Clark Members, going to do to further support our mission?”

In the generation since we of NAMI began our work here in Clark County, the population has tripled! We can no longer sit back and wait or hope people will find us and come to us for help. Let us come together around Janice McKenzie, and move towards fulfillment of our mission, which is, “to improve the quality of life for all those struggling with and affected by brain disorders; people with a psychiatric condition, family members, mental health professionals, and concerned citizens.”

Let each one of us join together to better achieve our goal, which is, “to support, educate, advocate, promote recovery, encourage research and political advocacy.”

Sincerely yours,

Don Greenwood

Don Greenwood, President
NAMI-Clark County

Meet
Janice McKenzie
NAMI Clark County Executive Director



Janice McKenzie comes to **NAMI Clark County** with over 15 years experience managing volunteer based programs in non-profit environments. Most recently, she developed a national support group program for the National Psoriasis Foundation and implemented a successful grassroots volunteer program. One of the strengths that Janice brings to **NAMI Clark County** is her ability to develop working partnerships.

Janice is drawn to serve with **NAMI** because of family members who are clients and the loss of a close friend with BPD to suicide. Janice was a support person for her friend and experienced common issues such as lack of housing, access to treatment, compliance and financial obstacles. As the new Executive Director, she is committed to working for the people of Clark County and building awareness, understanding and resources for clients and their families.

**DEPARTMENT OF COMMUNITY SERVICES LAUNCHES
WEBSITE AS RESOURCE FOR SERVICES**



Network of Care for Behavioral Health & Community Services

For a comprehensive listing of resources and news visit www.clark.wa.networkofcare.org

This Web site is a resource for individuals, families and agencies concerned with mental health, substance abuse, developmental disabilities, public health, and weatherization and housing. It provides information about laws and related news, as well as communication tools and other features. Regardless of where you begin your search, the Network of Care helps you find what you need - it helps ensure that there is "No Wrong Door" for those who need services. This Web site can greatly assist in our efforts to protect our greatest human asset - our beautiful minds.

In addition the link to "Calendars" will take you to "Community Calendars" where NAMI-Clark County regular programs and future programs will now be listed.

What if NAMI Clark County had a penny for every time you searched the Internet?

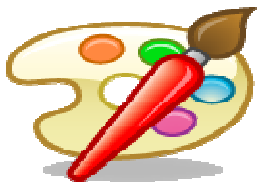
GoodSearch

You Search or Shop...
We Give!

Search the web with www.goodsearch.com and money from Yahoo advertisers will go to NAMI Clark County without you spending a dime!

Promoted by Oprah, the NY times, and Wall Street Journal, this is a fun and easy way to help NAMI Clark County earn funds. Go to www.goodsearch.com, and enter "NAMI Clark County" in the charity box. It's that simple!

A word from Department of Community Services



VISIONS OF RECOVERY POSTER CONTEST

The Clark County Regional Support Network, as part of an ongoing effort to promote mental health recovery and reduce the stigma associated with mental illness, is hosting the Visions of Recover Poster Contest.

We are inviting everyone who has received public mental health services in Clark County, and/or family members of recipients, to submit art that reflects their vision of what recovery means to them. We are looking for paintings or drawings, collages (using works that do not include copyrighted materials), original photography, and/or wall hangings that meet the size requirements (18" x 24" and no more than 2" thick) and can be reproduced as a poster. We will be displaying the works and are asking for permission to have the art for up to 1 year to share with the community as a whole.

Artwork must be submitted to the RSN offices between March 17th and 31st. There will be a public viewing of all entries at the Center for Community Health on April 8th from noon to 3 pm.

Six prizes will be awarded ranging in size from \$100 to \$225! The winning entries will be unveiled at the April Mental Health Advisory Board meeting, April 30th, as an introduction to Mental Health Recovery Awareness month in May. In addition, the winning poster will be reproduced for distribution throughout our community and our state in an effort to educate others about recovery.

Contest rules and entry forms are available in the CVAB office and may also be found on the Clark County web site at

<http://www.clark.wa.gov/mental-health/recovery/index.html>

If you have questions about the contest, please call Pat Roe or Melanie Green at the Department of Community Services at 360-397-2130.

CONFERENCE SCHEDULED

*Challenges in care giving: Giving Care,
Taking Care"*



Challenges in Care giving: Giving Care, Taking Care, a caregiver training conference will be offered on Monday, June 2, 2008 at the Tukwila Community Center in Tukwila, Washington. The event is sponsored by Aging and Disability Services Administration and Elder Health Northwest, along with the support of numerous community organizations.

The conference is designed to provide current, practical skills and resources that community caregivers can use in their daily care giving responsibilities. The conference is intended for:

- Family caregivers (spouses, adult children, parents of adults with disabilities, or other relatives)
- In-home caregivers (home care aides, individual providers)
- Adult Family Home Providers
- Adult Day Care or Assisted Living facility staff
- Geriatric mental health service workers

The Early Registration fee (by May 19) for individual caregivers is \$25. They include family members, individual COPES and chore providers. Scholarships are available for unpaid family caregivers.

The Early Registration fee for agency-based caregivers is \$50. Fees include workshops, lunch and resource exhibits.

Registration forms will be available in April and space is limited - so don't delay!

For more information or to receive a full brochure and registration materials, please call 1-800-422-3263 or 360-725-2544.



MEMBERSHIP DUES

ANNUAL DUES - \$35.00

DONATION \$ _____

No one is refused membership due to economic hardship. Some scholarships are available.

★ We are a registered non-profit organization 501(C)(3) and donations are tax deductible.

Name: _____

Address: _____

City: _____

State & Zip: _____

Phone: (____) _____

E-Mail: _____

Membership Includes:

- ★ NAMI National Advocate Magazine, Quarterly
- ★ NAMI Washington Friday Facts, weekly e-mail by request
- ★ NAMI Clark County Newsletter, bi-monthly

Please return your payment and completed form to:

NAMI Clark County
P.O. Box 5353
Vancouver, WA 98668



NAMI - CLARK COUNTY

Affiliate of the National Alliance on Mental Illness
The Nation's Voice on Mental Illness



"Our mission is to improve the quality of life for all those struggling with and affected by brain disorders; people with a psychiatric condition, family members, mental health professionals, and concerned citizens. Our goal is to support, educate, advocate, promote recovery, encourage research, and political advocacy."

Office Info

Office & Library

Hours:

Monday – Thursday
11:00 am– 2:00 pm
(closed on holidays)

Phone:

(360) 695-2823

Fax:

(360) 823-1088

Physical Address

317 East 39th Street
(SW corner of 39th
& Main Street)

Mailing Address:

PO Box 5353
Vancouver, WA
98668

Website:

www.nami-clark.com



2008

COMING EVENTS

March 11 (2nd Tuesday)

Education Meeting: 7:00-8:30pm

**Meet NAMI Clark County
Executive Director
Janice McKenzie**

GUEST SPEAKERS

Vanessa R. Gaston, Director
Melanie Green, Peer Support Specialist
Pat Roe, Family Support Specialist
Department of Community Services

Don't miss this opportunity to learn about the broad range of services available to you and your family plus exciting changes to come.

April 8 (2nd Tuesday)

Education Meeting: 7:00-8:30pm

**Guest Speaker: Mary Jadwisiak
Youth Suicide Prevention Program**

Mary will share important information regarding her program services and some helpful guidelines for you and your loved ones.

**March 18 & April 16 (3rd Tuesdays)
Monthly Family Support Group**

Board of Directors

Officers

President: Don Greenwood
Vice Pres.: Harley Sell
Secretary: Michele Wollert

Directors

Chriss Denny
Michael Mattox
Linda Phelan
Nancy Shafton
Loretta Walsh
Lennie Campbell
Nealane Riem

You Are Invited

Community Family Support Group

2nd Wednesday each Month
7:00 to 8:30 PM

Co-Sponsored by
NAMI-Clark County
And

Southwest Washington Medical
Center Behavioral Health Services:
ADAPT

(Awareness Directed Activities for
Personal Transformation)

SWMC Memorial Campus
3400 Main Street, Vancouver
ADAPT Living Room, 3rd Floor

Questions

NAMI-Clark County
Don Greenwood-571-5871

ADAPT:

Nancy Gierut-Wicker -696-5300

Monthly Meetings

Education Meeting

2nd Tuesday
6:45-8:30 p.m.

Family Support Group

3rd Tuesday
7-8:30 p.m.

Depression Bipolar Support Alliance Group

3rd Thursday
7-9:00 p.m.



A Word from President Don Greenwood



NAMI-Clark County has its first ever full-time Executive Director! Let us rejoice and be grateful! On Wednesday night, February 20, your board of directors chose Janice McKenzie of Aloha, Oregon to fill the position made possible by a grant from the Clark County Regional Support Network.

Janice previously was the National Support Groups and Volunteer Services Manager of the National Psoriasis Foundation, headquartered in Portland. Before that, she was the Manager of Volunteer Services for the Medical Teams International organization in Portland.

Janice has also worked extensively in church related positions, as the Ministering Arts Manager of Beaverton Christian Church and volunteered as the Administrator – Children’s Education Ministry in area Churches of Christ.

I hope each of you will call or drop by our NAMI Office to welcome Janice, and support her in her new position.

The first months she is with us, will be a time of orientation and learning for Janice. I will be introducing her to the leaders and personnel of Clark County agencies that serve mental health consumers and their families. She will be learning about our programs and offerings to the community. If you as a member of NAMI are close to agency leaders or community leaders, please set up a time to introduce them to our Executive Director. Or, just drop by the office and ask Janice how you can help and support her.

We cannot expect Janice to “do it all” for NAMI-Clark County. We cannot think, “Well now that we have an Executive Director, she can take care of all that needs to be done.” One of her primary responsibilities, for which she is so well suited, is to recruit and train volunteers. We need much more participation from our membership, so be thinking in which area your talents fit.

I rather often hear NAMI members bemoan the fact that we as an organization are not doing more in this area or that. I don’t understand how those who complain can expect so much from such a small core of volunteers. I feel like asking those who wish we would do more, “What then are you going to do about it?”

“What then are you, NAMI of Clark Members, going to do to further support our mission?”

In the generation since we of NAMI began our work here in Clark County, the population has tripled! We can no longer sit back and wait or hope people will find us and come to us for help. Let us come together around Janice McKenzie, and move towards fulfillment of our mission, which is, “to improve the quality of life for all those struggling with and affected by brain disorders; people with a psychiatric condition, family members, mental health professionals, and concerned citizens.”

Let each one of us join together to better achieve our goal, which is, “to support, educate, advocate, promote recovery, encourage research and political advocacy.”

Sincerely yours,

Don Greenwood

Don Greenwood, President
NAMI-Clark County

Meet
Janice McKenzie
NAMI Clark County Executive Director



Janice McKenzie comes to **NAMI Clark County** with over 15 years experience managing volunteer based programs in non-profit environments. Most recently, she developed a national support group program for the National Psoriasis Foundation and implemented a successful grassroots volunteer program. One of the strengths that Janice brings to **NAMI Clark County** is her ability to develop working partnerships.

Janice is drawn to serve with **NAMI** because of family members who are clients and the loss of a close friend with BPD to suicide. Janice was a support person for her friend and experienced common issues such as lack of housing, access to treatment, compliance and financial obstacles. As the new Executive Director, she is committed to working for the people of Clark County and building awareness, understanding and resources for clients and their families.

**DEPARTMENT OF COMMUNITY SERVICES LAUNCHES
WEBSITE AS RESOURCE FOR SERVICES**



Network of Care for Behavioral Health & Community Services

For a comprehensive listing of resources and news visit www.clark.wa.networkofcare.org

This Web site is a resource for individuals, families and agencies concerned with mental health, substance abuse, developmental disabilities, public health, and weatherization and housing. It provides information about laws and related news, as well as communication tools and other features. Regardless of where you begin your search, the Network of Care helps you find what you need - it helps ensure that there is "No Wrong Door" for those who need services. This Web site can greatly assist in our efforts to protect our greatest human asset - our beautiful minds.

In addition the link to "Calendars" will take you to "Community Calendars" where NAMI-Clark County regular programs and future programs will now be listed.

What if NAMI Clark County had a penny for every time you searched the Internet?

GoodSearch

You Search or Shop...
We Give!

Search the web with www.goodsearch.com and money from Yahoo advertisers will go to NAMI Clark County without you spending a dime!

Promoted by Oprah, the NY times, and Wall Street Journal, this is a fun and easy way to help NAMI Clark County earn funds. Go to www.goodsearch.com, and enter "NAMI Clark County" in the charity box. It's that simple!

A word from Department of Community Services



VISIONS OF RECOVERY POSTER CONTEST

The Clark County Regional Support Network, as part of an ongoing effort to promote mental health recovery and reduce the stigma associated with mental illness, is hosting the Visions of Recover Poster Contest.

We are inviting everyone who has received public mental health services in Clark County, and/or family members of recipients, to submit art that reflects their vision of what recovery means to them. We are looking for paintings or drawings, collages (using works that do not include copyrighted materials), original photography, and/or wall hangings that meet the size requirements (18" x 24" and no more than 2" thick) and can be reproduced as a poster. We will be displaying the works and are asking for permission to have the art for up to 1 year to share with the community as a whole.

Artwork must be submitted to the RSN offices between March 17th and 31st. There will be a public viewing of all entries at the Center for Community Health on April 8th from noon to 3 pm.

Six prizes will be awarded ranging in size from \$100 to \$225! The winning entries will be unveiled at the April Mental Health Advisory Board meeting, April 30th, as an introduction to Mental Health Recovery Awareness month in May. In addition, the winning poster will be reproduced for distribution throughout our community and our state in an effort to educate others about recovery.

Contest rules and entry forms are available in the CVAB office and may also be found on the Clark County web site at

<http://www.clark.wa.gov/mental-health/recovery/index.html>

If you have questions about the contest, please call Pat Roe or Melanie Green at the Department of Community Services at 360-397-2130.

CONFERENCE SCHEDULED

*Challenges in care giving: Giving Care,
Taking Care"*



Challenges in Care giving: Giving Care, Taking Care, a caregiver training conference will be offered on Monday, June 2, 2008 at the Tukwila Community Center in Tukwila, Washington. The event is sponsored by Aging and Disability Services Administration and Elder Health Northwest, along with the support of numerous community organizations.

The conference is designed to provide current, practical skills and resources that community caregivers can use in their daily care giving responsibilities. The conference is intended for:

- Family caregivers (spouses, adult children, parents of adults with disabilities, or other relatives)
- In-home caregivers (home care aides, individual providers)
- Adult Family Home Providers
- Adult Day Care or Assisted Living facility staff
- Geriatric mental health service workers

The Early Registration fee (by May 19) for individual caregivers is \$25. They include family members, individual COPES and chore providers. Scholarships are available for unpaid family caregivers.

The Early Registration fee for agency-based caregivers is \$50. Fees include workshops, lunch and resource exhibits.

Registration forms will be available in April and space is limited - so don't delay!

For more information or to receive a full brochure and registration materials, please call 1-800-422-3263 or 360-725-2544.



MEMBERSHIP DUES

ANNUAL DUES - \$35.00

DONATION \$ _____

No one is refused membership due to economic hardship. Some scholarships are available.

★ We are a registered non-profit organization 501(C)(3) and donations are tax deductible.

Name: _____

Address: _____

City: _____

State & Zip: _____

Phone: (____) _____

E-Mail: _____

Membership Includes:

- ★ NAMI National Advocate Magazine, Quarterly
- ★ NAMI Washington Friday Facts, weekly e-mail by request
- ★ NAMI Clark County Newsletter, bi-monthly

Please return your payment and completed form to:

NAMI Clark County
P.O. Box 5353
Vancouver, WA 98668



NAMI - CLARK COUNTY

Affiliate of the National Alliance on Mental Illness
The Nation's Voice on Mental Illness



"Our mission is to improve the quality of life for all those struggling with and affected by brain disorders; people with a psychiatric condition, family members, mental health professionals, and concerned citizens. Our goal is to support, educate, advocate, promote recovery, encourage research, and political advocacy."

Office Info

Office & Library

Hours:

Monday – Thursday
11:00 am– 2:00 pm
(closed on holidays)

Phone:

(360) 695-2823

Fax:

(360) 823-1088

Physical Address

317 East 39th Street
(SW corner of 39th
& Main Street)

Mailing Address:

PO Box 5353
Vancouver, WA
98668

Website:

www.nami-clark.com



2008

COMING EVENTS

March 11 (2nd Tuesday)

Education Meeting: 7:00-8:30pm

**Meet NAMI Clark County
Executive Director
Janice McKenzie**

GUEST SPEAKERS

Vanessa R. Gaston, Director
Melanie Green, Peer Support Specialist
Pat Roe, Family Support Specialist
Department of Community Services

Don't miss this opportunity to learn about the broad range of services available to you and your family plus exciting changes to come.

April 8 (2nd Tuesday)

Education Meeting: 7:00-8:30pm

**Guest Speaker: Mary Jadwisiak
Youth Suicide Prevention Program**

Mary will share important information regarding her program services and some helpful guidelines for you and your loved ones.

**March 18 & April 16 (3rd Tuesdays)
Monthly Family Support Group**

Board of Directors

Officers

President: Don Greenwood
Vice Pres.: Harley Sell
Secretary: Michele Wollert

Directors

Chriss Denny
Michael Mattox
Linda Phelan
Nancy Shafton
Loretta Walsh
Lennie Campbell
Nealane Riem

You Are Invited

Community Family Support Group

2nd Wednesday each Month
7:00 to 8:30 PM

Co-Sponsored by
NAMI-Clark County
And

Southwest Washington Medical
Center Behavioral Health Services:
ADAPT

(Awareness Directed Activities for
Personal Transformation)

SWMC Memorial Campus
3400 Main Street, Vancouver
ADAPT Living Room, 3rd Floor

Questions

NAMI-Clark County
Don Greenwood-571-5871

ADAPT:

Nancy Gierut-Wicker -696-5300

Monthly Meetings

Education Meeting

2nd Tuesday
6:45-8:30 p.m.

Family Support Group

3rd Tuesday
7-8:30 p.m.

Depression Bipolar Support Alliance Group

3rd Thursday
7-9:00 p.m.



A Word from President Don Greenwood



NAMI-Clark County has its first ever full-time Executive Director! Let us rejoice and be grateful! On Wednesday night, February 20, your board of directors chose Janice McKenzie of Aloha, Oregon to fill the position made possible by a grant from the Clark County Regional Support Network.

Janice previously was the National Support Groups and Volunteer Services Manager of the National Psoriasis Foundation, headquartered in Portland. Before that, she was the Manager of Volunteer Services for the Medical Teams International organization in Portland.

Janice has also worked extensively in church related positions, as the Ministering Arts Manager of Beaverton Christian Church and volunteered as the Administrator – Children’s Education Ministry in area Churches of Christ.

I hope each of you will call or drop by our NAMI Office to welcome Janice, and support her in her new position.

The first months she is with us, will be a time of orientation and learning for Janice. I will be introducing her to the leaders and personnel of Clark County agencies that serve mental health consumers and their families. She will be learning about our programs and offerings to the community. If you as a member of NAMI are close to agency leaders or community leaders, please set up a time to introduce them to our Executive Director. Or, just drop by the office and ask Janice how you can help and support her.

We cannot expect Janice to “do it all” for NAMI-Clark County. We cannot think, “Well now that we have an Executive Director, she can take care of all that needs to be done.” One of her primary responsibilities, for which she is so well suited, is to recruit and train volunteers. We need much more participation from our membership, so be thinking in which area your talents fit.

I rather often hear NAMI members bemoan the fact that we as an organization are not doing more in this area or that. I don’t understand how those who complain can expect so much from such a small core of volunteers. I feel like asking those who wish we would do more, “What then are you going to do about it?”

“What then are you, NAMI of Clark Members, going to do to further support our mission?”

In the generation since we of NAMI began our work here in Clark County, the population has tripled! We can no longer sit back and wait or hope people will find us and come to us for help. Let us come together around Janice McKenzie, and move towards fulfillment of our mission, which is, “to improve the quality of life for all those struggling with and affected by brain disorders; people with a psychiatric condition, family members, mental health professionals, and concerned citizens.”

Let each one of us join together to better achieve our goal, which is, “to support, educate, advocate, promote recovery, encourage research and political advocacy.”

Sincerely yours,

Don Greenwood

Don Greenwood, President
NAMI-Clark County

Meet
Janice McKenzie
NAMI Clark County Executive Director



Janice McKenzie comes to **NAMI Clark County** with over 15 years experience managing volunteer based programs in non-profit environments. Most recently, she developed a national support group program for the National Psoriasis Foundation and implemented a successful grassroots volunteer program. One of the strengths that Janice brings to **NAMI Clark County** is her ability to develop working partnerships.

Janice is drawn to serve with **NAMI** because of family members who are clients and the loss of a close friend with BPD to suicide. Janice was a support person for her friend and experienced common issues such as lack of housing, access to treatment, compliance and financial obstacles. As the new Executive Director, she is committed to working for the people of Clark County and building awareness, understanding and resources for clients and their families.

**DEPARTMENT OF COMMUNITY SERVICES LAUNCHES
WEBSITE AS RESOURCE FOR SERVICES**



Network of Care for Behavioral Health & Community Services

For a comprehensive listing of resources and news visit www.clark.wa.networkofcare.org

This Web site is a resource for individuals, families and agencies concerned with mental health, substance abuse, developmental disabilities, public health, and weatherization and housing. It provides information about laws and related news, as well as communication tools and other features. Regardless of where you begin your search, the Network of Care helps you find what you need - it helps ensure that there is "No Wrong Door" for those who need services. This Web site can greatly assist in our efforts to protect our greatest human asset - our beautiful minds.

In addition the link to "Calendars" will take you to "Community Calendars" where NAMI-Clark County regular programs and future programs will now be listed.

What if NAMI Clark County had a penny for every time you searched the Internet?

GoodSearch

You Search or Shop...
We Give!

Search the web with www.goodsearch.com and money from Yahoo advertisers will go to NAMI Clark County without you spending a dime!

Promoted by Oprah, the NY times, and Wall Street Journal, this is a fun and easy way to help NAMI Clark County earn funds. Go to www.goodsearch.com, and enter "NAMI Clark County" in the charity box. It's that simple!

A word from Department of Community Services



VISIONS OF RECOVERY POSTER CONTEST

The Clark County Regional Support Network, as part of an ongoing effort to promote mental health recovery and reduce the stigma associated with mental illness, is hosting the Visions of Recover Poster Contest.

We are inviting everyone who has received public mental health services in Clark County, and/or family members of recipients, to submit art that reflects their vision of what recovery means to them. We are looking for paintings or drawings, collages (using works that do not include copyrighted materials), original photography, and/or wall hangings that meet the size requirements (18" x 24" and no more than 2" thick) and can be reproduced as a poster. We will be displaying the works and are asking for permission to have the art for up to 1 year to share with the community as a whole.

Artwork must be submitted to the RSN offices between March 17th and 31st. There will be a public viewing of all entries at the Center for Community Health on April 8th from noon to 3 pm.

Six prizes will be awarded ranging in size from \$100 to \$225! The winning entries will be unveiled at the April Mental Health Advisory Board meeting, April 30th, as an introduction to Mental Health Recovery Awareness month in May. In addition, the winning poster will be reproduced for distribution throughout our community and our state in an effort to educate others about recovery.

Contest rules and entry forms are available in the CVAB office and may also be found on the Clark County web site at

<http://www.clark.wa.gov/mental-health/recovery/index.html>

If you have questions about the contest, please call Pat Roe or Melanie Green at the Department of Community Services at 360-397-2130.

CONFERENCE SCHEDULED

*Challenges in care giving: Giving Care,
Taking Care"*



Challenges in Care giving: Giving Care, Taking Care, a caregiver training conference will be offered on Monday, June 2, 2008 at the Tukwila Community Center in Tukwila, Washington. The event is sponsored by Aging and Disability Services Administration and Elder Health Northwest, along with the support of numerous community organizations.

The conference is designed to provide current, practical skills and resources that community caregivers can use in their daily care giving responsibilities. The conference is intended for:

- Family caregivers (spouses, adult children, parents of adults with disabilities, or other relatives)
- In-home caregivers (home care aides, individual providers)
- Adult Family Home Providers
- Adult Day Care or Assisted Living facility staff
- Geriatric mental health service workers

The Early Registration fee (by May 19) for individual caregivers is \$25. They include family members, individual COPES and chore providers. Scholarships are available for unpaid family caregivers.

The Early Registration fee for agency-based caregivers is \$50. Fees include workshops, lunch and resource exhibits.

Registration forms will be available in April and space is limited - so don't delay!

For more information or to receive a full brochure and registration materials, please call 1-800-422-3263 or 360-725-2544.



MEMBERSHIP DUES

ANNUAL DUES - \$35.00

DONATION \$ _____

No one is refused membership due to economic hardship. Some scholarships are available.

★ We are a registered non-profit organization 501(C)(3) and donations are tax deductible.

Name: _____

Address: _____

City: _____

State & Zip: _____

Phone: (____) _____

E-Mail: _____

Membership Includes:

- ★ NAMI National Advocate Magazine, Quarterly
- ★ NAMI Washington Friday Facts, weekly e-mail by request
- ★ NAMI Clark County Newsletter, bi-monthly

Please return your payment and completed form to:

NAMI Clark County
P.O. Box 5353
Vancouver, WA 98668