



NAMI CLARK COUNTY

Affiliate of the National Alliance on Mental Illness
The Nation's Voice on Mental Illness



"Our mission is to improve the quality of life for all those struggling with and affected by brain disorders; people with a psychiatric condition, family members, mental health professionals, and concerned citizens. Our goal is to support, educate, advocate, promote recovery, encourage research, and political advocacy."

Office Info.

Office & Library

Hours:

Monday – Friday
11:00 am–3:00 pm
(closed on holidays)

Phone:

(360) 695-2823

Fax:

(360) 823-1088

Physical Address

317 East 39th Street
(SW corner of 39th
& Main Street)

Mailing Address:

PO Box 5353
Vancouver, WA 98668

Website:

www.nami-clark.com



NOVEMBER DECEMBER 2007

COMING EVENTS

November 13th (2nd Tuesday)

Education Meeting: 7:00-8:30pm

Guest: Marlene Burrows

Topic: Crisis Line & CIT

November 20th (3rd Tuesday)

Family Support Group: 7:00-8:30pm

November 27th Holiday

Celebration Party gift wrapping

Volunteer night 6:30-9:00pm

December 7th NAMI Annual Consumer Holiday Celebration

Register now by calling the office at
(360) 695-2823.

December 13th (3rd Tuesday)

Family Support Group: 7:00-9:00pm

Board of Directors

Officers

President: Don
Greenwood
Vice Pres.: Harley Sell
Secretary: Judy Straub
Treasurer: Dave
Sanders

Board Members

George Delgado
Cris Denny
Michael Mattox
Linda Phelan
Nancy Shafton
Loretta Walsh
Michele Wollert

Monthly Meetings:

Education Meeting

2nd Tuesday
7:00-8:30 p.m.

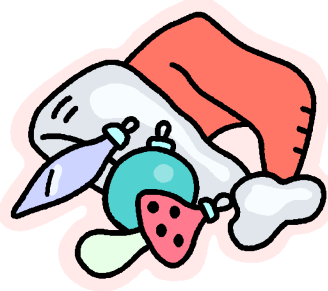
Family Support Group

3rd Tuesday
7-8:30 p.m.

Depression Bipolar Support Alliance Group

3rd Thursday
7-9:00 p.m.

***NAMI Annual
Consumer
Holiday
Celebration
December 7th
Register now!***



NAMI HOLIDAY CELEBRATION!

It's that time of year again! This year's celebration party is packed with new and special entertainment that will warm everyone's heart who attends. We will have a second to none dinner with turkey, ham, and all the trimmings right down to the pie. A special appearance will be made by Santa himself with gifts for everyone. We don't want anyone to miss this event so call the NAMI office to register. Our phone number is (360) 695-2823. You will not want to miss the party. If you would like to help out, please call Lennie Campbell at (360) 624-3288. **Your help and cash donations to support this event are always greatly appreciated!**

Family 2 Family Class

We are starting another Family to Family class January 10, 2008. Now is the time to sign up to be a part of this class. The program runs for 12 weeks and you will learn how to help your family member and yourself. The class is offered at no cost to you. Please call now. The office phone number is (360) 695-2823. The office is open Monday to Friday 11:00-3:00pm.

EDUCATION MEETINGS

Every 2nd Tuesday 7:00-8:30 pm

NAMI offers *free* public education meetings. Join us in learning more about mental health, illness and wellness, held at the Wellness Project Building

November Meeting: Tues. November 13th

**Featuring: Marlene Burrows
Topic: Crisis Line & CIT**

Education classes starting January 2008

Jean Lough Workshop

October 5th was the date for our Annual Jean Lough Memorial Workshop. About 45 people attended the meeting. Jane Cartmell was the guest speaker. Her lesson was on how to advocate for our family members with a mental illness.

