



Open on a falling puzzle piece.



We widen out to reveal a blue puzzle man picking up the fallen puzzle piece.



We cut to a close up of our puzzle man putting the piece back into place. We see other pieces fall off him.



As he reaches for another piece, we see another hand come in and pick up the piece that our puzzle man was reaching for.



We cut to a close up of our man looking up with a quizzical look on his face.



The camera widens out to reveal a friendly "NAMI" person. She is holding a blue puzzle piece.



We cut to a close up of our "NAMI" person placing the fallen puzzle piece back into place.



We cut wide again to see our "NAMI" woman picking another puzzle piece up.



She then places another puzzle piece onto a different location on the puzzle man's body.

VO: To help friends and loved ones who



We cut to a wide shot as we see our "NAMI" person helping our puzzle man get to his feet (please note our puzzle man should still be blue).

VO: ...live with mental illness,

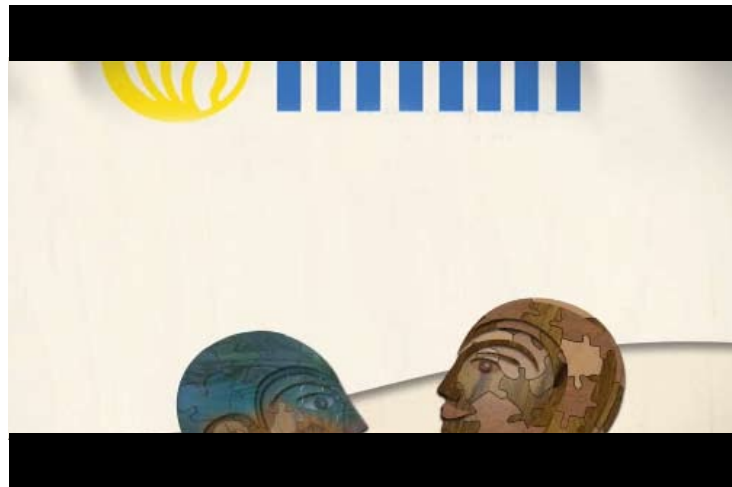


We cut to them interlocking hands. We watch as her "warmth" spreads to our puzzle man (there should be warm wood pieces on our puzzle man).

VO: ...all we want to do is connect.



Cut to a wide as we see that our blue puzzle man is now a warm puzzle man like our "NAMI" person.



The camera rises to reveal the NAMI logo.

VO: To understand. NAMI can help.



We end on the NAMI logo,

SUPER: Support education advocacy

