



nami

National Alliance on Mental Illness

ANNUAL REPORT

2020
2021
2022
2023

WHO WE ARE

The National Alliance on Mental Illness (NAMI) is the nation's largest grassroots mental health organization dedicated to building better lives for the millions of Americans affected by mental illness.

What started as a small group of families gathered around a kitchen table in 1979 has blossomed into the nation's leading voice on mental health. Today, we are an alliance of more than 600 local Affiliates and 49 State Organizations that work in your communities to raise awareness and provide support and education.

OUR VISION

NAMI envisions a world in which all people affected by mental illness live healthy, fulfilling lives supported by a community that cares.

OUR MISSION

NAMI provides advocacy, education, support and public awareness so that all individuals and families affected by mental illness can build better lives.

OUR VALUES

HOPE

We believe in the possibility of recovery, wellness and the potential in all of us.

INCLUSION

We embrace diverse backgrounds, cultures and perspectives.

EMPOWERMENT

We promote confidence, self-efficacy and service to our mission.

COMPASSION

We practice respect, kindness and empathy.

FAIRNESS

We fight for equity and justice.



“Through creativity and collaboration, we’ve continued to meet growing demands for mental health support by developing new, innovative resources in 2022 that amplify our collective wisdom and help us meet people where they are.”

As the world has begun to establish a new normal post pandemic, NAMI has led the way in reimagining crisis response, challenging workplace norms and developing resources that are accessible to ALL people.

Change is never easy, but there is no group more passionate, determined and caring than the NAMI community.

One thing that makes our Alliance so special is how we bring our lived experiences to the table. We know firsthand what it’s like to navigate the mental health system in search of support for ourselves and our loved ones. We provide empathy and practical advice that comes from personal understanding and peer support.

Through creativity and collaboration, we’ve continued to meet growing demands for mental health support by developing new, innovative resources in 2022 that amplify our collective wisdom and help us meet people where they are.

In this report, you’ll see how, together, we:

- Published NAMI’s first book, “You Are Not Alone: The NAMI Guide to Navigating Mental Health,” which quickly became a national bestseller.
- Launched NAMI’s first podcast, “Hope Starts with Us,” which landed in the top 25% of podcasts upon launch.
- Built momentum around the national activation of the 988 Suicide and Crisis Lifeline through our #ReimagineCrisis campaign, which was awarded for its successful advocacy and awareness efforts.
- Collected research and data across the field through tools like the Cultural Linguistic Assessment Survey (CLAS).

- Expanded our reach to underserved communities through our first Pathways to Hope Conference, our work with historically Black colleges and universities, the new online NAMI Ending the Silence program, texting options for the NAMI HelpLine and so much more.

Because of you, we are building a world in which all people affected by mental health conditions can truly thrive. Thank you for being a part of this movement with us — and for helping us accomplish all we have done, all we are doing and all that is still to come.

Daniel H. Gillison, Jr.
NAMI Chief Executive Officer

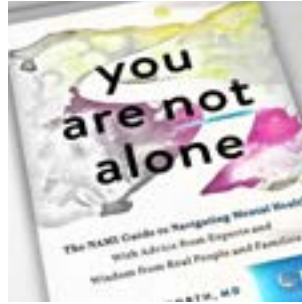


4

I value the bravery with which these people share their personal experiences to help destigmatize mental health for others. Let's talk about it all.

— Lori Gottlieb, leading therapist and author

NAMI breaks new ground with first-ever book and podcast



“YOU ARE NOT ALONE: THE NAMI GUIDE TO MENTAL HEALTH”

hit hometown and online bookstores in September, quickly capturing a spot on USA Today's Best-Selling Books List.



Written by NAMI Chief Medical Officer Dr. Ken Duckworth, the book blends research-based insights with clear, actionable advice and wisdom. Readers and reviewers praised Dr. Ken's decision to center the book on personal stories gathered from more than 130 people living with mental illness or caring for someone who does.

73

cities and towns hosted NAMI's live book tour

24

million viewers attended virtual book tour events featured via WebMD, CBS Mornings, the National Institute of Mental Health Innovation Series and more



“HOPE STARTS WITH US,” NAMI's first-ever podcast, launched in July with healing perspectives from special guests representing virtually all aspects of mental health. NAMI CEO Daniel Gillison, Jr. and other hosts dove into topics such as back-to-school anxiety, generational trauma and the experience of losing a loved one to suicide. In its first week, the show ranked in the top 25% of all active podcasts and reached 5,700+ downloads by year end.




“Hope Starts With Us” episodes air every other Wednesday and are available on most major directories and apps. Learn more at nami.org/podcast.

NAMI HelpLine puts hope and resources in people's hands

As one of our earliest efforts to fight stigma and support people with mental illness, the [NAMI HelpLine](#) embodies our mission to make sure no one struggles alone.

From a single phone line in a small Washington, D.C. office to a nationwide network of NAMI volunteers responding through mobile, internet and voice channels, the NAMI HelpLine has dramatically expanded its reach. Volunteers, many with lived mental health experience, blend personal wisdom with facts and resources in NAMI's [HelpLine Knowledge Center](#) to enable people – including families, friends, caregivers, mental health professionals and the public – to find the answers they need.

 **TEXT CAPABILITIES** were added in August, putting the NAMI HelpLine within reach of everyone with a smartphone. The move will benefit people who may never have contacted NAMI before, especially teens and young adults, who overwhelmingly favor text as a way to find personal support. After text support rolled out, the NAMI HelpLine served a record 7,000 people in a single month via all channels – a new benchmark.

311,000

help-seekers served via the NAMI HelpLine and Knowledge Center

81%

said they would recommend the NAMI HelpLine to others

Source: NAMI HelpLine effectiveness survey, launched in 2022.

NAMI HelpLine at a glance

Monday – Friday
10 a.m. – 10 p.m. Eastern Time

CALL: 1-800-950-6264
(1-800-950-NAMI)

TEXT: “HelpLine” to 62640

EMAIL: helpline@nami.org

CHAT: [NAMI.org/help](https://www.nami.org/help)



When Destiny, 17, was referred to the NAMI HelpLine, she was in a difficult place. The NAMI volunteer who responded to her text asked about her situation while fellow volunteers searched for mental health resources near her. Sensing an urgent need, NAMI HelpLine managers contacted emergency responders, who arrived in time to get Destiny the care she needed.

My first reaction was tears. Knowing there are truly people out there who know and understand and have experienced the same thing was enlightening, encouraging and inspiring.

— Participant in a Sharing Hope session

Community conversations meet people where they are

NAMI seeks to advance the mental wellness of all people living in the U.S. We know the tools people need will depend on age, background, location, language, family ties and much more. Throughout 2022, we improved and expanded our offerings for communities across the country, including many whose needs have long been overlooked.

SHARING HOPE, NAMI's outreach program for people of Black and African ancestry, grew from 13 locations in 2021 to more than 56 communities.

COMPARTIENDO ESPERANZA, our national program devoted to people of Latino heritage, also reached new audiences. Both programs create a safe space to talk about mental health symptoms and treatment, explore ways to find effective care and advocate for more community resources.

CROSS-CULTURAL INITIATIVES gained momentum as NAMI worked with historically Black colleges and universities (HBCUs) and youth-focused groups such as the Boys and Girls Club of America to offer urgently needed mental health education and support for young people.

CONVERSATIONS IN COMMUNITIES (COCO) gave people and families a new way to explore shared mental health concerns. At one COCO gathering hosted by NAMI Southern Nevada, a Latina mother expressed fears for her children, who had lost two friends by suicide. Worried that her work schedule would keep her from offering all the support her kids needed, she found help and understanding from fellow parents and neighbors.

PATHWAYS TO HOPE CONFERENCE

This nationwide conference, organized by NAMI FaithNet, welcomed nearly 3,000 people of different faith traditions, who explored a blend of local and national programming. Emphasizing the role that houses of worship can play in supporting people who struggle with mental health, attendees talked about ways to reduce stigma, build grassroots support and tap local resources that will benefit members and the larger community.

This conference is unique for two reasons. First, it is truly grassroots, as represented by NAMI state and local affiliates, who bring a variety of stakeholders together to create change at the community level. Secondly, it is one of the few conferences that highlight the role of faith and spirituality in supporting individuals living with a mental health challenge.

NAMI appreciates the innovative work of NAMI Greater San Antonio in creating this conference and offering NAMI and all of you the chance to continue to build its impact in communities.

Mental health resources for youth, shaped by young voices

NAMI joined others in urging leaders to take immediate action to address the nationwide youth mental health crisis. To meet this need, we are creating age-appropriate resources and building a robust network that unites parents, teachers, coaches, caregivers, lawmakers, community leaders and others to create hope for young people and advocating for policies that improve resources for youth mental health.

NAMI NEXT GEN, a new 10-member young adult advisory group, represents the voices of young people across the country. The group’s role is to ensure that young people feel seen, welcomed and supported whenever they visit NAMI websites, education programs, events and resources.

BACK-TO-SCHOOL time can trigger mental health concerns, and this fall NAMI stood ready with a new online suite of free tools. In just two months, visitors logged 35,000 page views as they explored resources for educators, parents, caregivers and young people.

A NEW MENTAL HEALTH COLLEGE GUIDE microsite, created in partnership with The Jed Foundation, went live in August. In just five months, 25,000 unique visitors found practical advice on stress management, navigating relationships, self-advocacy and how to find mental health resources on campus.

NAMI ENDING THE SILENCE 2.0, an online version of our signature mental health program for middle-school and high-school students, launched in May. By year end, more than 3,000 students, educators and parents had come together in 73 locations to talk about the warning signs of mental health issues and what to do when young people need help.

GIRL SCOUTS OF THE USA (GSUSA) partnered with NAMI to support Girl Scouts’ overall mental well-being and to provide more resources to Girl Scout families and volunteers. NAMI served as the subject matter expert on the development of Girl Scouts’ mental wellness patch programs for Girl Scouts in grades 4–12, which will help girls better understand mental wellness and provide them with skills to strengthen their resilience. NAMI also served as the subject matter expert for Girl Scouts’ online volunteer training course about mental health and how to support Girl Scouts’ well-being. In addition, GSUSA and NAMI are working together to strengthen local relationships between Girl Scout Councils and NAMI State Organizations and Affiliates. The Mental Wellness Patch Programs was launched at the 2023 Girl Scout Convention July 20-22 at the Walt Disney World® Resort.

MEET LITTLE MONSTER, NAMI’s free coloring and activity book, gives adults a positive way to start mental health conversations with children. Available in five languages, this new resource was downloaded more than 23,000 times in 2022.

1 in 4

teens have been diagnosed with a mental health condition*

50%

youth aged 6-17 who have a mental health condition do not receive treatment**

95%

of teens trust their parents and guardians as sources of mental health information, but need help starting the conversation*

Sources: **“Teen Mental Health from Teens Themselves,”* poll conducted by Ipsos for NAMI, 2022. ***“Mental Health Care Matters”* NAMI fact sheet.

Listening to a panel of presenters, I realized I had helped all three become NAMI Connection facilitators. Our train-the-trainer approach builds great leaders and creates a real community of support.

— Laurie, a NAMI-certified National Trainer



Education and support groups reveal the power of a community that cares

Throughout 2022, NAMI found new ways to enrich and expand our community-based education and peer support programs, drawing on the wisdom and lived experience of people who are devoted to helping others learn, grow and thrive.

NAMI PEER SUPPORT GROUPS

reached out to welcome new audiences thanks to a successful awareness campaign paired with effective training that widened the field of facilitators ready to lead new groups. [NAMI Connection](#) groups served tens of thousands living with a mental health condition while [NAMI Family Support Groups](#) focused on the unique needs of parents, spouses, and others offering ongoing care for someone they love.

[NAMI HOMEFRONT](#) is a free course devoted to the mental health needs of military Veterans and their friends, families and caregivers. Through a partnership with the Department of Veterans Affairs, NAMI offered live courses in five cities with large military populations in 2022. More than 2,000 registered users tapped into NAMI Homefront's online resources, with 73% asking to receive more resources via email.

NAMI PARTNERED WITH KOHL'S CARES to launch Together We Care.

Together We Share, a campaign to find and train new group facilitators while welcoming more people to free NAMI support groups, especially in underserved areas.

[NAMI HEARTS+MINDS](#), a new education program launched in May, reminds all of us that mental health is physical health. This all-new curriculum helps people manage their overall wellness with a blend of online resources, in-person sessions and peer wellness support. Five NAMI State Organizations and Affiliates introduced the free course in their areas, with a full rollout set for 2023.

NAMI's free education courses also include:

NAMI Basics, a foundational course for parents, guardians and others caring for people with mental health symptoms.

NAMI Family-to-Family, a learning space for spouses, partners, friends and family of adults with mental health challenges.

NAMI Peer-to-Peer, a place where adults living with a mental health diagnosis can learn, grow and offer mutual aid.

NAMI Provider, a training program bringing the wisdom and insights of people with mental illness directly to physicians, nurses, social workers, direct care workers, administrators, talk and occupational therapists, psychologists and others. With 100 new facilitators in training, NAMI Provider is slated to grow in 2023 and beyond.

Record-breaking advocacy drives progress for millions

In 2022, thousands of people nationwide advocated with NAMI's Government Relations and Policy and Advocacy team to press for laws and policies that will benefit millions of Americans.

250+

mentions of NAMI by members of Congress in 2022, more than any other mental health organization

THE YEAR-END FEDERAL LEGISLATIVE PACKAGE

contained [unprecedented funding](#) for mental health, including over \$500 million for the 988 Suicide and Crisis Lifeline and more than \$1 billion for the Mental Health Block Grant, while also expanding the mental health workforce, extending telehealth options, addressing mental health parity, improving crisis response services, improving connections to care for justice-involved youth and much more.

NAMI LEADERS FROM ACROSS THE COUNTRY

trekked to Capitol Hill to advocate for our policy priorities. In November, more than 35 NAMI Executive Directors conducted 77 meetings with congressional offices, 13 of which were with members of Congress themselves. Priorities included crisis services, workforce and mental health funding and an end-of-year package.

THE BIPARTISAN SAFER COMMUNITIES ACT

made major investments in our nation's mental health system. NAMI spearheaded efforts to ensure the bill did not link gun violence with mental illness, leading a statement endorsed by 59 other organizations.

55,000+

letters sent to Congress by NAMI advocates

NAMI NATIONAL'S POLICY TEAM

testified in Congress about the need to invest in mental health, drawing praise from House Appropriations Committee Chair Rosa DeLauro, who referred to NAMI as "the gold standard."

NAMI STATE LEGISLATION REPORT: TRENDS IN MENTAL HEALTH POLICY

looked at state activity to improve mental health care in 2020 and 2021, focusing on how states are helping people get help early, get the best possible care and get diverted from justice system involvement. The report highlighted ways that NAMI State Organizations led efforts in those areas.



77%

of U.S. adults are not content with the status of mental health treatment in this country

“My sister has bipolar schizoaffective disorder. During an ice storm in Texas, her power went off, leaving her alone, disoriented and unable to reach me. Her neighbor called a mental health crisis team that miraculously came through the storm to assess her situation. Had they not been ready to help, she might have ended up on the street.”

– Mercedes, on the value of 988 and local crisis outreach

988 SUICIDE AND CRISIS LIFELINE GOES LIVE

After years of advocacy and preparation, 988 became the new number to contact for mental health, substance use and suicide crises anywhere in the country. NAMI drove efforts to ensure that 988 is the first step in reimagining our national response to people in crisis through our #ReimagineCrisis efforts.

- 50 partners joined in NAMI’s [#ReimagineCrisis](#) coalition.
- NAMI led a full-page open letter in The Washington Post on the day that 988 became available nationwide.
- NAMI staff experts published op-eds on the importance of 988 in [The Philadelphia Inquirer](#), [MedPage Today](#) and [The Washington Post](#).
- NAMI was recognized for its #ReimagineCrisis campaign, [receiving](#) the Communications Innovation Award from the Public Affairs Council.

Sources: “988 Crisis Response Research,” poll conducted by Ipsos for NAMI, 2022.

Building teamwork, innovation and engagement across the Alliance

NAMI's community-level work flows through 650 NAMI Affiliates and 49 NAMI State Organizations across the country. More than 50% are volunteer-run, working with the active support of programs created by NAMI's Alliance Relations, Development and Field Governance Team (ARDFG).

NAMI LAUNCHED ITS COMMUNITY OF PRACTICE in March, giving NAMI National Board Advisory Councils a new way to scale resources and share successful ideas across the Alliance.

NAMI ALLIANCE DAY 2022 offered leadership development sessions for more than 600 attendees, who gave the June gathering top ratings for effectiveness. More than 87% said they found fresh opportunities to strengthen the Alliance through ongoing learning and partnerships.

NAMI's ANNUAL EXECUTIVE DIRECTORS' LEADERSHIP EXCHANGE welcomed 100 participants, a record number, for an in-person session filled with innovative ideas.

NEW FIELD ASSESSMENTS studied NAMI's organizational health and operating model and established a baseline of cultural and linguistic competency. Data from these unique assessments will support targeted, sustainable decisions to help expand NAMI's impact across the country.

NAMI UNIVERSITY, a course for new NAMI leaders launched in August, drawing 500+ enrollees who praised the course's ability to help them get up to speed quickly and effectively. Discussions of a NAMI University, a resource center including toolkits, templates and proven practices began in 2022 and continue to develop.

NAMICON 2022: TOGETHER FOR MENTAL HEALTH

HOSTED VIRTUALLY for the safety and well-being of the NAMI community

6,691 Attendees

234% Year-Over-Year Growth in Youth Attendees

5 Unique Tracks

30 Workshops

7 Plenary and Special Events

9 Alliance Day Sessions



"I would go to meetings.... And we would ask questions. And [our leader] would talk about the principles of NAMI. The principles of dignity. The principle of stepping out of the way. Letting people have their experiences and their life and getting help where they really need it."

– Mayim Bialik

“The most amazing thing about NAMIWalks is not the money raised, or the number of teams or even the number of participants. It is the number of connections, partnerships, conversations and collaborations that happen along the way.”

- Sandra Sorensen, Executive Director for NAMI Finger Lakes in New York.

NAMIWalks reach new levels of excellence

Successful community events are a tangible benchmark of grassroots support for all nonprofit organizations. In 2022, NAMI showed just how deep this support goes with NAMIWalks hosted in 121 communities from coast to coast.

NAMI-NYC RAISED A RECORD \$1 MILLION at its NAMIWalks event in May, drawing on the dedication of 5,500 participants and a host of generous sponsors.

SEVEN NEW NAMIWALKS raised funds and awareness in Evansville, Indiana; Four Rivers, Mississippi; Missoula, Montana; Far North Idaho and three Florida locations — Gainesville, Hillsborough and Pasco.

THE PEER-TO-PEER PROFESSIONAL FORUM (P2P), a leading network for producers of peer-to-peer fundraising events, named NAMIWalks its [Organization of the Year 2022](#). NAMI also ranked among [P2P's Top 30 Fundraising Events](#) for the second consecutive year.

SUCCESS CAME IN ALL SIZES, with NAMIWalks setting and exceeding fundraising goals as modest as \$5,000 and as ambitious as \$1 million. Events took place in large cities; in desert, mountain and oceanside communities; on riverfronts, rural trails, suburban parks and more.

NAMI EXTENDS ITS GRATITUDE for the thousands of local sponsors who made NAMIWalks possible in 2022 — and those who will help us continue to achieve our goal of “Mental Health for All” in the years ahead.



121 Events Countrywide

234% Increase in Registered Participants

\$14.65 Million Raised (Up 11% Year-Over-Year)

Research to improve treatment, foster understanding and inspire hope

NAMI's commitment to mental health research dates to the earliest days of the Alliance. In 2022, we shared new insights from brain science, genetics and treatment options while advocating for current and future research that will yield healing answers for millions.

NAMI TOOK PART IN 60 RESEARCH ENGAGEMENTS,

including 12 research advisory groups and steering committees. We actively partnered with the American Academy of Pediatrics, the Accelerating Medicines Partnership Schizophrenia Steering Committee and Work Groups, the National Alliance on Caregiving, the National Rural Adolescent and Child Health Environmental Influences on Child Health Outcomes Training Center and many other groups devoted to mental health research.

FIELD STUDIES AND SURVEYS DOCUMENTED THE VALUE

of NAMI Basics and NAMI Peer-to-Peer education programs and the effectiveness of NAMI HelpLine operations. We also hosted focus groups where people shared personal stories of seeking mental health treatment, revealing the ups and downs of navigating our current care system.

NAMI PARTNERED WITH DARTMOUTH COLLEGE

to organize a discussion of non-biological causes of early death in people with serious mental illness.

THE 2022 NAMI SCIENTIFIC RESEARCH AWARD

honored Christine Yu Moutier, MD, chief medical officer of the American Foundation for Suicide Prevention, for her tireless investigation of suicide's impact in communities and the role that people, families, colleagues and community leaders can play in reducing suicide risks. Supported by the Peter Corbin Kohn Endowment, NAMI's Scientific Research Award is celebrated at NAMI's annual Inspiring Hope Through Research event.

NAMI Research Team talks in 2022 touched on topics such as:

- Long-acting injectable medications for mental health symptoms
- Practical, effective ways to cope with mental illness
- Evidence-based NAMI programs that educate and inspire hope
- Why cancer patients often face mental health struggles

NAMI's Research Team worked with PBS to create a free [fact sheet](#) mapping mental health struggles in rural America.

\$120.9

million increase in FY23 funding for the National Institutes of Mental Health, thanks in part to NAMI's active support.

The most trusted voice in mental health today

Every day, NAMI seeks to reach a larger share of the millions of people affected by mental illness in the United States. Through strategic and highly successful outreach, we elevate stories of hope, wisdom, progress, advocacy and courage that reflect NAMI's commitment to the health of individuals, families and communities.

11.1

million + visitors came to NAMI.org, 5% more than in 2021

121%

growth in social media impressions year-over-year

82%

more impressions during Suicide Prevention Awareness Month in September

25%

increase year-over-year in earned media mentions, with 46,394 total articles

WITH MORE THAN 1 MILLION SOCIAL MEDIA FOLLOWERS in 2022, NAMI gained influence on popular platforms people turn to for news, connection and inspiration.

NAMI CAPTURED A 76% SHARE OF EARNED MEDIA ARTICLES NATIONWIDE, compared to other mental health advocacy organizations, reflecting our position as the leading source of information and insights on mental health.

NAMI BLOGS DREW 4.2 MILLION VIEWS as visitors explored topics such as the value of music, faith, and comedy in easing mental health symptoms, addressing trauma among first responders, building mental health resilience and many more.

The Philadelphia Inquirer, the Washington Post, STAT and MedPage Today published opinion pieces authored by NAMI senior leaders, including CEO Daniel Gillison, Jr., Chief Medical Officer Dr. Ken Duckworth, Chief Advocacy Officer Hannah Wesolowski and Associate Medical Director Dr. Christine Crawford.

NAMI CEO DANIEL GILLISON, JR., spoke at Politico's first-ever health summit, "From Shadows to Solutions: The Future of U.S. Health Care." He joined Dr. Anita Everett, director of SAMHSA's Center for Mental Health Services; Amy Knight, president of the Children's Hospital Association; and Andrew Kolodny, medical director of opioid policy research, Heller School for Social Policy and Management at Brandeis University for an in-depth discussion of the mental health crisis, which many have termed "a shadow pandemic."

AN ASSOCIATED PRESS ARTICLE FEATURING NAMI, "Genes link bipolar, schizophrenia, once thought unrelated," appeared in **328 media outlets** with **802 million** potential readers



3,489%

more impressions and

5,332%

more engagements on YouTube

Board of Directors



Joyce A. Campbell, J.D.
President



Vanessa Fernandes-Randall, SHRM-CP
First Vice-President



Micah Pearson
Second Vice-President

Executive Committee



Cathryn Nacario, BSN-RN, PHN, MHCA
Secretary



Jeff Fladen, MSW
Treasurer



Shirley J. Holloway, Ph.D.
Immediate Past President



Amy Brinkley, CRS/CHW, CAPRCII



Lisa B. Dixon, M.D., MPH



Joseph Gatto, J.D.



Sheldon A. Jacobs, PsyD, LMFT



Carlos A. Larrauri, MSN



Ray Charles Lay, CHW/CRS



Pooja Mehta, MPH



Connie Mom-Chhing, D.M., MPA



Vanessa Price, B.A.



Jeremiah Rainville, CCHW, CPRS, and CCSP



Lauren B. Simonds, MSW



Glenda Wrenn Gordon, M.D., MSHP



Darien Wright
At-Large Director

Directors

NAMI Ambassadors



Willa Amari



Utkarsh Ambudkar



Maria Bamford



Elise Banks



Andrea Barber



Maurice Benard



Mayim Bialik



Ananya Birla



Rachel Bloom



Sterling K Brown



Haley & Hanna Cavinder



Carly Chaikin



Diana Chao



Kelsey Darragh



Kimberly Dawn



Corinne Foxx



Brad Gage



Sherman Gillums, Jr.



Clark Gregg



Isaiah Grass



Taraji P Henson



Marin Hinkle



Jamie Gray Hyder



Chris Hubbard



Brooke Johnson



Rita Kamishiro



David Kendrick



Glenn Lutz



Jeannie Mai



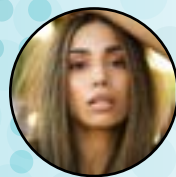
Aija Mayrock



AJ Mendez



Dawn McCoy



Brittany McGowan



Percy "Master P" Miller



Dani Nicolet



Nadya Okamoto



Tega Orhorhoro



Stafania Owen



Mauro Ranallo



Snake Sabo



Frank Shamrock



April Simpkins



Marcus Smith



Morgan Stewart



Jay Stolar



Sutton Strake



Kendall Toole



Alessandra Torresani



Tritonal



Vincent Valentine



Kota Wade



Wil Wheaton



DeWanda Wise



YX

2022 #Vote4MentalHealth All-Stars

NAMI relaunched its #Vote4MentalHealth campaign, part of our long-standing efforts to help voters and candidates understand the impact that voting has on mental health care. #Vote4MentalHealth provides resources for people to learn more about the intersection of key policy issues and mental health, find ways to engage candidates, directly register to vote and take the #Vote4MentalHealth pledge. NAMI received thousands of pledges as advocates shared what #Vote4MentalHealth meant to them and encouraged others to join the movement.



NAMI recognized a group of #Vote4MentalHealth All-Stars — NAMI State Organizations and Affiliates across the country who went above and beyond to get out the vote, highlighting the power of the ballot box in working toward meaningful change. Thanks to our campaign, many of our NAMI organizations were able to provide a much needed service during the election season — helping thousands of mental health advocates exercise their right to vote.

NAMI Blair County PA

NAMI Greater Indianapolis

NAMI Kansas

NAMI Lowcountry

NAMI Maryland

NAMI Massachusetts

NAMI Metro Baltimore

NAMI Minnesota

NAMI Montgomery County PA

NAMI New Jersey

NAMI Southeast Minnesota

NAMI Tennessee

NAMI Texas

NAMI-West Central Indiana

NAMI Wisconsin

Honoring Chris Huvane

In 2022, NAMI was honored to receive donations in memory of Chris Huvane, a beloved and well-respected leader in Hollywood, who died by suicide after living with depression for many years. Chris spoke openly about his mental health challenges and inspired countless others to do the same. To honor his life and legacy, the Huvane family created a memorial page on the NAMI website. To date, over \$500,000 have been raised by more than 1,000 individual donors to support NAMI's mission. The Huvane family is dedicated to raising awareness about mental health, and we are grateful for their tremendous support and partnership.



AbbVie	Chapter 4 Corp (aka Supreme)	Janssen Pharmaceuticals	Penn Mutual
Absolute Software	Chegg.org	Johnson & Johnson Health Care Systems, Inc.	People's First Charitable Foundation
Acadia Pharmaceuticals Inc.	Chiesi	J Willard and Alice S Marriot Foundation	Perficient
ACCO Brands	Cigna Foundation	Kaiser Permanente	Pfizer
Adobe Foundation	Citrin Cooperman	Kappa Kappa Gamma	Plus1
ADP Foundation	Colgate	Karuna Therapeutics	PositiveNRG (NRG Energy)
AG Adriano Goldschmied, Inc.	Conscious Step	Kendra Scott	Public Consulting Group
Alkermes	ConstructConnect	Kohl's	Publicis Health
Amazon	Corcept Therapeutics	KPMG Foundation	QBE Insurance
AMC	Crocs	KT Foundation	RBC Foundation USA
AMN Healthcare	Cute But Crazy	Lady M Cakes	Sage Therapeutics
Anthem, Inc.	David Geffen Foundation	Leibowitz and Greenway Family Charitable Foundation	Shear Family Foundation
Artist Partner Group (Schwab Charitable DAF)	DA Davidson	LEDVANCE	Sikand Foundation
ASICS	Dancing Tides	Lokai	Somos
Ascot Group	Delta Air Lines	Lorel2US	Sony
Astellas	Disney	L'Oreal USA, Inc.	Sozosei Foundation
Axsome Therapeutics	E4E Relief	LOUM Beauty	Stanley Center for Psychiatric Research Broad Institute of MIT and Harvard
AWE Inspired	Elevance Health	LS Technologies	Steinburg Institute
BAE Systems	Enboarder LLC	lululemon	Sun Life Financial
Bankers Healthcare Group Financial	Entertainment Industries Council	Lundbeck	Sunovion Pharmaceuticals
Bank of America	Execs in the Know	Macy's	Supernus Pharmaceuticals
Be Your Possible Inc	Experian	Magellan Cares Foundation	Syneos Health
Bessemer Trust Co	EY	Markel Corporation	Takeda Pharmaceuticals America, Inc.
Biotechnology Innovation Organization	Fabletics	Mattress Firm	Takeda-Lundbeck Alliance
BioXcel Therapeutics	Facebook	May & Stanley Smith Charitable Trust	Tattle Tales
Boehringer Ingelheim	Francis Beidler Foundation	Maybelline	Teva Pharmaceuticals
BPCM NYC LTD	Gabit Interactive Media	Meta	TikTok
The Boeing Company	Genentech	Miraval Resorts & Spas	Tides Foundation
Bristol Myers Squibb	Girl Scouts of America	Myriad Genetics	TMS NeuroHealth
Broad Institute	Google LLC	Neiman Marcus	Thrivent
Bubble Skincare	Greater New York Mutual Insurance	Neurocrine Biosciences, Inc.	Viatrix Inc.
Businessolver	Greenwich Biosciences	Neuronetics, Inc.	Voodoo Doughnut
Calm	GSN Games	Northrop Grumman	Walt Disney
CDM Smith	Harry's	Novo Nordisk, Inc.	Warner Music Group
Centene Corporation	The Hartford	OC&C Consulting	WarnerMedia
Centene Charitable Foundation	HBO	Otsuka America Pharmaceutical, Inc.	WebMD
Center for Disaster Philanthropy	Health Care Services Corporation	PagerDuty.org	Wedbush Securities
Centric Brands	Hilltop Foundation	Palayam Foundation	Well Being Trust
Cerevel Therapeutics	Hinman Foundation	Patient Services	Wells Fargo & Company
CGI Technologies and Solutions	Hostess	Paycom	WNBPA
Chanel, Inc.	Humana	Paylocity	Zappos
	Into the Light		
	Intra-Cellular Therapies		

NAMI Leadership Alliance: Major Donors and Family Foundations*

19

We are grateful for the support of all NAMI Leadership Alliance donors, including many who choose to remain anonymous.

The A. Woodner Fund, Inc.	John and Cathy Anthony	Irrevocable Trust	Eric Binder
AB Homes	Lynda Antonelli	Justin Barber	Janet and Richard Birnbaum
Chris and Martha Abbinante	Kristin Antoon	Robin Barker	Craig Bitterman
Grace Abbott	Dineshni Anumala	Constance Barnes	Gary and Lorna Bjorklund
Abraham and Beverly Sommer Foundation	The Apax Foundation	David Barnhart	Andi Black
Daniel Abrams	James Apple	Eugene Barr	Lori Black
Absolute Software Corporation	APPNA	Christopher Barta	Todd Black
Thomas Ackerley	Jennifer Armentrout	Bartholomew Aguayo Family Fund	Norman Blair
ActivTrak Inc	Tim Armour	Lorrie Bartlett	Jocelyn Blaskey
Bryce Adams	Debra Arneson	Jesse Basford	Barbara Blaylock
Nancy and R. Neil Adams	Nicole Aron	Anna Basista	Rochelle Blease
Olivia Adelman	Savitri Arora	Jeff Bass	Pamela Bleimehl
Julia Adeney Thomas	Jarrett and Nora Arp	Julia Batdorf	Blended Waxes
ADJLM Foundation	Arpit Kothari Charitable Fund	Thomas Bauer	Mary Beth Bletsas
Adtalem Global Education	Rick Arredondo	Alison Baumann	The Blinder Family Fund
Agee Family Foundation	Art for Change	Rahul Bawa	Linda Block-Coalter
Krishna Agrawal	Ashlee Margolis Inc.	Robert Bayne	Jeanne Bloom
Maria Aguayo	ASICS Digital	Susan Bechter	Patricia Bloomer
Julia Aiken	Association For Better Health	Aldijana Becirovic	Blueboard Inc
Al and Mary Guckes Fund	Astrograph Software, Inc	Melinda Beck	Theodore Blumenthal
Alan & Janan Carter Charitable Fund	Russ Atha	The Becket Family Foundation	Mark and Judy Bohnsack
Alanis Morissette Family Fund	Atlantic 10 Conference	Judith Beckman	Gretchen Bolanos
Mary Sue Albanese	Sara Atwood	Lainie Sorkin Becky	Randy Boldyga
Jennifer Allen	Jonathan Au	Sarah Bedford	Michael Bolotin
Michael Altman	Kelley Audrain	Mark Beiting	Rana Bonds
Joseph Altonjo and Cynthia Nethercut	Annella Auer	Christine Bell	Bonnie and Mike Gaffney Family Foundation
Allison Ambrose	Andres Avellaneda	Belovsky Foundation	Dawn Bookhardt
American Independent Business Coalition	E. Avendano	Julia Bender	The Bookkeeping Fund
Pam Ames	David Axelson	Gene Benedetto	Michael A. Booth
Kim Amesquita	Janet Axelson	Sarah Benedetto	The Borcherding Heck Charitable Fund
Brooke Amos	Axelson Family Charitable Fund	Marsha Bennett	Boston University
Tyler Anbinder	Joel Axler and Louise Short	Alice Benson	Karen Boudreau
Edward and Joan Anders	Christine Aylward	Alisha Berger	Nadia Bouziane
Eric Andersen	Robert and Margaret Ayres	Mark Berger	Bowden-Strimple Revocable Trust
J. Sue Anderson	Jeffrey Baab	Judy and James Bergman	Sharon Bowyer
Jason Anderson	Babson College	Bergstrom Foundation, Inc.	Ann Boyer
Sally Anderson	Stephen Bache	Gregory Berlanti	BPCM NYC, Ltd
Andrea Lipp Kingsley Fund	Jackie and Jeff Badders	Helena Birmingham	Margaret Braband
Julia Andress	Karl G. Baer	Cathy Bernard	Brach Family Fund
Andrew and Diana Dempsey Charitable Fund	Laura Bagnall	Marilyn Best	Alan Bradley
Andrew B. Mayer Foundation Inc.	M. S. Bailey	The Betts Family	Scott Bradley
Pamela Andrews	Regina and Luke Bakalar	Susan Beveridge Menendez	Matthew and Amy Brady
Ann and Jamshed Mulla Charitable Fund	Gail H. Baker and Robert N. Knetl	Beverly and David Passon Trust	Jeff Brand
Anonymous Fund of MCF	Susan Baker and Nancy Strauch	Rana Bhatia	Heidi and Steve Lee Brandemuehl
	Hollie Baker-Lutz	The Bialik Fund for Freilachkeit	Gena Brandt
	William Ball	Erin Bigley	Harjit Brar
	Stacie Ballard	Bill and Byrnie Fund	
	Wendy Balter	The Bill and Sharon Dickson Charitable Fund	
	The Barbara H. Wilson		

Mike Brazier	Kathy Burrell	James Chew	Virginia Connors
Mark Breen	C. Burton	Arjun Chimni	Pam Conover
Susan Brehm	Taylor Busk	Julie Chin	Jessica Conway
Peggy Bremer	Rosalie Bustos	Chorzempa Family Foundation	Robert Conzo
Perri Brendzel	Jerry Buysse	Wilson Chow	Cook Family Foundation
Richard Brener	Suzan Bymel	The Chris and Melody Malachowsky Family Foundation	Charlotte Cooksey
Catherine Brennan	Linda Byron	Marie Christensen	David Cooley
Tracy Brennan	Kye H. Byun	Susan Christiansen	Foy Cooley
Julie Breskin	Virginia Bzdek	Christ's Evangelical Lutheran Church	Donald Coons
Peg and John Breslin	Michael and Tania Cahill	Nancy Church	Amy Cooper
Daniel Brettler	Cahill Family Fund	San Church	Tara Cooper
The Brewer Charitable Fund	Calder Family Fund	Cindy Taylor Robinson and Family Charitable Fund	Karen Corby
Russel and Linda Brezler	Delois Caldwell	Holly Ciotti	Lee Cordrey
Brian Timothy Backer Trust	June Calhoun	Evelyn Clair	Molly Cornell
Thomas Bridges	Rachel Callison	Clarence F.W. and Virginia W. L. C. Young Fund of the Hawai'i Community Foundation	Chelsea Corson
Donald Britt	Maryann Camardo	Gail Clark	Catherine Coscarelli
Christine Broda	Eric Cameron	Lisa Clark	Catherine Costello
Seth Brodie	B.J. Campbell	Theresa Clarke	James Costos
Leslie Bronner	Natalie Campbell	Clarkston-Potomac Group, Inc	Cottonwood Creek Marina, Inc.
Eileen Brooks	Campbell Snowflakes	Cathleen Cleary	Cox Farms Virginia, Inc.
Rachel Brosnahan	Marcus Canady	Joan Cleary and Jerry Helfand	Judith Craig
Angela Brown	Norma Canzano	Nathan Clegg	Rebecca Craig
Ann Brown	Naomi Caras-Miller	Kevin Clevenger	Craig Brenner Trust
Claire and Hubert Brown	Kori Carbonaro	Michael Clifton	Kathleen Crawford
Cornelius C. Brown	Carey Cox Wyatt Charitable Foundation Inc	Arlo Clough	Raphael Crawford-Marks
Deborah Brown	Jeanne Carlson	CM - UWW	Victoria Creeden
Eryn Brown	The Carol J. Adragna Family Foundation	Leo F. Coffey	Nancy Crispin
Herbert Brown	Carol Savio Charitable Fund	Patrick Coffey	Cameron Cross
James B. and Elizabeth Brown	Douglas J. Carr	Jacqueline Cogswell	Gregory Cross
Karen Brown	Stanley Carr	Allan Cohen	David Crow
Mary Brown	Brian Carroll	Andrew Cohen	Philip Crow and Lisa Crow
Willie Brown	Diana Carroll	Ellen Cohen	Kathleen Crowley
Janice Brown and David Goldsmith	John Carroll	Gabe Cohen	Rebecca Crown
Brown Brothers Harriman & Co.	Thomas Carter	Lauren Cohen	Brian Crutchfield
Carolyn Brue	Kristin Casado	Coker Foundation	Alba Cruz
Elijah Bruette	Gina Cassel	Lisa Coleman	Balazs Csaki
Jonathan Brumer	Jeff and Ginny Cassidy	The Coleman Family Foundation	Cudd Foundation
Gregory and Robyn Bruns	Consuelo Castro	Tom Collinger	J. Stuart Cumming
Molly Bruns	Caterpillar Foundation	Cindy Collins	Marissa Cundiff
Michael Brunsvold	Cecala Family Charitable Fund	Collins Building Services LLC	Aimee Cunningham
Sylvia M. Bryan and James Norman	Jackson Cecil	Michael and Carla Colton	Sharon Curhan
James Buck	Gary Cederquist	Comcast Corporation	Custom Ink
Frederick Buckner	David Chamberlin	The Commonwealth Fund	Melanie and Eliot Cutler
James Budke	Jamison Chang	Craig Comstock	Charles Cycon
Bonnie Bufkin	Joseph Chang and Juliet Siegel	Gary Conaway	The Cynthia and George Mitchell Foundation
Kathryn Bullock	Chapman Bird & Tessler Inc	Irene Conner	Margaret Cytryn
James Norman	Geralyn Charapata-Marsh	Patrick Connor	Daniel Czaplicki
Diane Bundrant	Charles E. & Dorothy K. Brown Foundation		D.E. Hodun Fund
Bonnie Buratti	Monica Chase		D.O. Good Charitable Fund
Rebecca Burnau	Hillary Chen		Guan Da Wang
Kimberly Burns			D'Agostino Family Foundation
			Mark Daigneault

Anita Dale	Deborah Cowley	John Duffillo	Jon and Sarah Erdman
Dale-Harverd Family Account	Elizabeth D'Hemery	Frank Dunau and Amy Davis	Joe Ergonis
Nadeem Dallal	Diane Arber Hirsch Charitable Trust	Diana Dundore	Shawn Erickson
Joseph Daly	Diane and John Dormanen Foundation	Dune Jewelry Inc.	Bob and Kathy Erkel
Stephanie Dangelo	Dianne Snedaker Charitable Fund	James Dunk	Anne Esker
Timothy Daniel	Glenice and Kenneth Dickson	Greg and Nicole Dunlap	Nicholas Esposito
Daniell Family Legacy Trust	William and J. Sharon Dickson	Alison Durant	Gene A. Esswein
Ann Daniels	Vincent Dilauro and Paul Vesely	Nancy Alice Dyar	Estate of Alice G. Quinn
Leslee Dart	Josh Dillon	Mary Dyer	The Estate of Billy S. Kee
Dauten Family Foundation	Kristyn Dillon	Elisabeth Dykens	Estate of Eugenia West Ferrell
Brenda Davenport	Noah Dillon	Michele Dyson	Estate of Jennifer Marie Brown
Jeremy David	Michael Dilmagani	E&B Family Trust	Jeff and Leeann Ettinger
David S. Stone Foundation	Dimitrov Family Foundation	The Earl and Shirley Greif Foundation Trust	Peter Evans
Dan and Valerie Davidson	Ruth Dinowitz	Earp Family Fund	Nicole Evelyn
Ryan Davidson	Jacquelyn Dinvaut	Andrew Echeguren and Lila Gyory	Mark Ewing
Davidson Trucking, Inc.	Kara DioGuardi	Thomas Edelblute	Ezor Charitable Fund
Gary Davis	Lisa Dixon and Andrew Farb	Bennett and Janet Edelman	Carol Faget
Geena Davis	Eugene Dobrzyn	Rebecca Eden	Jenna Fagnan
Isaac M. Davis	Meghan Doheny	Douglas Edgren	Jacob Fahringer
Isaac and Anastasia Davis	Bridget Dolan	Edison Electric Institute	Fain-Malsky Charitable Foundation
Norma Davis	Michael Dolan	Jessica Edwards	Ann M. Fallon
Richard Davis	Karen Dolins	John Edwards	Nora Farber
Robert Dayton	The Donald G. Goodwin Family Foundation Inc	Torrey Edwards	Ellen Farbstein
Henri De Corn	Karen Donnellon	Art Ehde	Irish Farley
Gary Deamer	Sharon Donohoe	Eickmeyer & Associates, Inc.	Abraham Faroni
Michael Dean	Catherine M. Donovan	Debra and Robert Ekman	Colin Farrell
Desiree DeAscentis	Yael Dornbusch	El Zack Nicky Rakieten/Kupferberg	FBO William and Janet Brownstein
DebbieHenrikCharity	Des Dorsaneo	Ian Eldred	Regina Fechter
Mary Debroux	The DOT Printer, Inc.	Danielle Eliav	Alan Feiger
Anne Decker	Doubleon Foundation Inc	Elinor Beidler Siklossy Foundation	Zachary Feingold
Decus Biomedical Inc.	Martin Doublesin	Elizabeth Elser Doolittle Charitable Trust	Henry Feldman
Sandra DeJong	Kathleen Doughty	Jackson Elizondo	Adrie Feller
Richard Dela Rosa	Michael Douglas	Ellen F. Gordon Charitable Trust	James and Tammy Felt
Nancy Delaney	Barbara Dowd	Bill Ellenbogen	Mary Feltel
Teri DeLano	Denna Downhour	Paul M. Elliott	Amy Feng
Carl Deleon	Downingtown Area School District	Vicky Ellis	Ellen Fenn
Christina Dell	Andrew P. Doyle	Wendy Ellis	George Fenster and Paula Brust
Delta Sigma Theta Sorority Inc. Prince George's County Chapter	Garrett Doyle	Kimberly Ellwanger	Joseph Ferenc
DemandScience LLC	William Doyle	Charles and Margaret Elmer	June and Vincent Fergus
Jill DeMaster	Andrii Drach	Tom and Jeanne Elmhurst	Fergus Foundation
Gilbert and Lilly Dembo	Ina Drew	Janet Elson	Mark and Susan Fern
Demery Family Foundation	Eric Dreyer	Employee Assistance Society of North America	Vanessa Fernandes
Carol Denning-Spangler	Drouillard Family Fund	The EMSS Foundation, Inc.	M. Elaine Ferrara
Dennis, Leslie, Kat & Charlotte	Jonathan Duarte	Teri Engler	Sharilyn Fetterhoff-Bacci
Jennifer Dennison	Catherine Duba	Nina and Mark Engstrom	Robert Feuerstein
Shaily Desai	Shelley DuBois	Brady Enright	Paul and Toni Fibkins
Lynn Desprez	Marie Dubuque	Clarence Entwistle	Elizabeth and Michael Fieweger
George DeTitta Jr.	Liz and Donald Duffy		Kristen Fikse
Detter Family Foundation Inc			Find Your Grind Foundation
Penelope Devin			Kaitlin Fink
Mark Dexter and			Laura Finn

Nicholas Fiondella	The G. and S. Curhan Family Charitable Foundation	Skyler Glodek	Edward Hall
The Firefly Trust	G. B. & M. May Foundation	Frederick Gloeckler	Rena Hall
Scott Fisher	G. J. Brown Charitable Trust	Colin Goddard	Monica Haltmeyer
Janice Fiske	Andrea Gabbard	Jason Goerges	Fern and Ed Hamel
Christopher Fitzgerald	Harris Galkin	Elias Goetzel	Richard and Lorie Hamermesh
Five Points Foundation	Theresa Gallagher	Kathleen Goldammer-Copeland and Mark Copeland	The Hammer Family Charitable Fund
Isaac Flage	Matt Galsor	Carlos Goldberg	Jan Hammond
Richard Flaherty	Joann Galst	Kathleen M. Goldblatt	William Handley
Sean Flannery	Apoor Gami	Scott Goldman	James Handsaker
Dorothy Flattery	Catherine Gardner	Terree and Philip Goldstein	Anthony Handzlik
Flaxman Family Charitable Trust	William Gardner	Vince Gonski	Ruth Hanenkratt
Austin Fleming	Joe Gargiulo	Greg Gonzalez	Michael Haney
Barbara and Raymond Flunker	Jennifer Garner	Goodman Real Estate Services Group LLC	Haney/Francis Giving Fund
FlynnBoyle Family Fund	Eileen and Stanley Garnett	Donald and Ellen Goodwin	Barbara Hanrahan
Allen Fogel	Michael Garrahan	Deidre Goodwin Carovano	Robert Hansel
Norman and Adrienne Fogle	Katelyn Garrett	Hari and Sonali Gopalkrishnan	Jack Hansen and Joan LeGare-Hansen
Robert Folberg	Joseph F. Gaskill III and Connie Burgoyne Gaskill	Phyllis Goranson	Marci Hanson
Mike Foley	Kaitlin Gatti	Jeffrey Gordon	Kenneth Harbison
Kristina Foss	Anne Gearity	Rene E. and Marilyn S. Grace	Suzanne Harbster
Eve Fouche	Brett Gelman	Wayne Grace	Catherine Harding
Arisa Fourie	Michael Gendler	Fillan Grady	Phil Harmon
Mary Foutz	Geneva Community High School Activity Fund	Michael Graham	The Harold R. Goldmann Charitable Trust
Justin Fowler	Judy Gentile	Patsy Graham	Charles Harrell
Harriette and Allan Fox	Julie Gentry	Grandison Foundation	Anthony Harris
Leslie Fox	Krista Gerhard	Madeleine Grant	Samala Harris
Michael Fox	Nick Gerner and Susan Moskwa	Thomas Gravina	Judith Harris and Norman Ornstein
Francis Beidler Foundation	Risa Gertner	Doug Grawe	Kelly Hartman
Francis Giving Foundation	Gertz-Pellicane Family Fund	Julie Gray	Elizabeth Hartnett
Luisa Francoeur	Shelby Geter	Marcus Gray	Abul Hasan
Jon Frank	Nancy Gewirz	Gray Family Charitable Fund	Jim and Kathy Haselmaier
Frank Strick Foundation, Inc	Robert Giannasi	John Green	Irene Haskvitz
Fransto LLC	Alexandra Gibbons	Joseph Greenberg	George Hasley
Mr. and Mrs. Stephen Fredman	Chantele Gibson	The Greenberg Foundation	Sandra Hatch
Janine Freeman	Leslie Gilinson	Elaine Greene	Paul Haupt
Lucile Freeman	Vickie A. Gilligan	Dan and Janet Greenwald	Bastian Hausfeld
Phoebe Freeman	The Gina Kametsky Fund	William Greer	Linda Hayes
Jennifer Freet	Michael Gitlin	Mark Greif	James Hayes and Catherine Keig
Kalie French	Jill Giuricich	Catherine Grewell	Anitta Haywood
Laura French	Frank Gjata	Wendy Grieser	Health Care Service Corporation
Dan Frey	Solange Bullukian	Richard and Ruth Griffin	Health Partners
Morris Friedell	Jennifer Glasgow	Jan Groh	Hediger/McLernon Giving Fund
Lawrence Friedland	Laura Glass	Jason Grosfeld	Roger and Julie Heegaard
Adeline Friedman and Darin Geri Leo	Arthur Gleckler and Kristine Kelly	Wanda Grossman	Jerry Heftler
Elizabeth and Glen Friedman	The Glenn A. Ducat and Beverly Krivokapich Living Trust	Douglas Grove	David Hegarty
Hallie and Stew Friedman	Glenn and Mev Royer Family Fund	Mark Grovhoug	Robert Heggie Wilson Jr. and Family
Judy and Howard Friedman	The Glickenhau Foundation	Darcy Gruttadaro	Kurt Heinemann
Lawrence and Joan Friend	Ella Glodek	Lauren Guinta	Greg Heinzinger and Kerstin Pfann
Joan Fromewick		Vedant Gupta	
Janis Fuhrman		Sarah Haberman	
Patricia Fuller		Belinda Haggard	
Richard and Karen Furst		Charles Hagood	
Annette Furst and LJ Miller			

Benjamin Helfman	Marion Howard	Mickie James-AldisJamey	Kadenwood Personal and Pet
Cynthia Helisek	James Howe	and Julie Power Charitable	Care LLC
Calvin Henderson	Maureen Hoyer	Giving Fund	Karen Kafer
Patricia Henderson	Linda Hoyes	The Jan H. Bottcher	The Kain Family Giving Fund
Rachel Henderson-Pennington	Robert Hoyler	Charitable Fund	Kaiser Permanente
Thomas Hendrick	Carl Hubacher Jr	Jane & Payson Swaffield	Daniel Kamen
The Henry Foundation	William Huber	Charitable Fund	Howard Kaminsky
Sandra Henson	Tad Huffard	E. Janopaul-Naylor	Lyrin Kanczuzewski
The Herb Ritts, Jr. Foundation	Barbara Hughes	Alyssa Jaquelyn	Tyler Kanczuzewski
Bluma Herman	Susan Hughes	Jim Jarrell	James Kandell
Marie Hermann	Susan J. Hughes	James Jaskot	Kendra Kane
Emmett Herrick	Shirma Huizenga	Susan Jefferson	Lynne Kane
Taylor Herrick	Kristi Hunter	Jeffrey J. and Mary E. Burdge	Abaraham Kaner
Kelly Herther	Cortney Huot	Charitable Trust	Kanesathasan Charitable Trust
Erik Herzog	Linda Husar	Jessica Jenkins	Maya Kapoor
Rachel Herzog	Brian Hutchings	Juliette, George and	Kappa Kappa Gamma
Robert and Jean Hess	Melissa Hutchison	Brahn Jenkins	Sujata Kar
Michael Hexner	Michael, Sarah and	Sanela Jenkins	Logan Karanovich
Andrew Hibel	Kathleen Huvane	Judith Jennison	Kara's Giving Account
Jessie B. Hill	Robert Huvane	T. G. Jensen	Joan Kasner
Melissa, Annette and William Hill	Hyatt Shared Services Center	Jeri and Joel Finard	Jessica Kasten
Melony Hill	Keren Hymo	Charitable Fund	Adin Katz
Amber Hillhouse	Kimi Iguchi	The Jesse H. Oppenheimer	Debra Katz
David Hiltz	Ingram Foundation	& Susan Oppenheimer	Dana Kauffman
Robert Hirsch	Inspired Nation Inc.	Foundation	Fuat Kavak
Clarke Hitch	Insurance Services Office, Inc.	Jim & Jan Ozinga	Gary Kay
Michael Hjerpe	Interpublic Group	Stewards Fund	Kay Boemer Charitable Fund
Anne Hodge	Into the Light Foundation	Jim & Monica Rutherford	KBC Charitable Fund
Andrea Hoff	Ira S. and Anna Galkin	Chraitable Account	Patricia Keegan
Richard and Judith Hoffman	Charitable Trust	JKM Family Charitable Fund	Alan Keiser
Richard Hoffman	Lori Ireland	Joe Lee Griffin Foundation	Arleene Keller
Shana Hoffman	Isadore A. Raff	John & Rose Herman Support	Catherine Keller
Carol Hoffman Matzke	Family Foundation	Foundation	Beth Kelley
Christine Hogan	Carol Isbell	The John F. Maher Family	David Kelly
Brian and Janice Hogan	Kristina and Lance Ivy	Foundation	Kim Kelly
Justin Holbrook	Ivy Family Fund	John Green Alison Zaeder Fund	Linda Kelly
Sasshua Hollomon	Basil Iwanyk	Bonnie Johnson	Kelly and Julie Ludwick
Shirley J. Holloway	J3 Wine Partners LLC	Carolyn A. Johnson	Giving Fund
Eryn Hong	Jace Cohen Giving Fund	Marilyn Johnson	Kelly Foundation
Rachel Hooker	Vickie Jack	Sally Johnson	Judith Keltner
Mari Hooten Lee and Randy Lee	Gerald Jackson	Stephen Johnson	Markus and Denise Kemper
Gillian Hormel	Jennifer Jackson	Steven Johnson	Frances Kempler
Andrew Horowitz	Linda Jackson	Johnson Giving Fund	Adrienne Kennedy and Hal
Arlene Horowitz	Marion Jacobs	Johnstone Supply, Inc.	Puthoff
Craig and Andrea Horowitz	Enguerrand Jacquillat	Kirk Jones	Elizabeth Kennedy Potkowski
Horowitz Family	Ken and Debbie Jaffe	Nicholas Jones	Kenneth Kendler and Susan
Charitable Fund	Vinit Jagdish	Joseph H. Goldberg Family	Miller Fund
David Hoselton	Joe and Susan Jahraus	Foundation	Annette Kenney
Cindy Hosmer	Priya Jain	Joseph K. and Inez Eichenbaum	William Kennington
Houff Charitable Foundation	Kay James	Foundation	Ann Kenowsky
Sean Houseworth	The James and Sheila	Mary Judge	Leslie Kenyon
Albert Howard	Ingram Fund	Nathan Jump	Paul Kepple
Donald Howard	The James Fall Charitable Fund	The JV Schiro-Zavela	Patricia Kerr
		Foundation	

Aleen Keshishian	Corey Kotlarz	Linda Leach	Litman Weinberg
Alek Keshishian	Christopher Kovach	Linda F. Leander	Charitable Fund
Kim Kesner	Daniel Kraakevik	Marcia LeBeau	Anna Liu
Linda Kester	Burton Krain	Austin Ledbetter	Live Nation Worldwide, Inc.
Steven and Marta Ketchel	Michael Kramer	The Lede Company	Living Trust of Deena C. McClain
Arfa Khan	Kristi Kramersmeier	Abbott and Pamela Lee	Selina Lo
Ashley Khan	Barbara and Michael Krancer	Brian J. Lee	Victoria Lock
Donald F. and Joan B. Kimmel	Ellen Krantz	Carolyn Lee	Kia Locksley
Kenneth Kinard	Eric Krantzler	Gloria and Eddington Lee	Janet Lockwood
Rachel Kindt and Greg Marcus	Kristin and Matthew Porter Fund	Gregory Lee	David Lococo
Jon King	Kristin Anderson Charitable	Roland Lee	Allan Loeb
Mike King	Foundation	The Lee and Eunice Collins Trust	Michael Loehrke
Roger King	Gretchen Kroll	Donna Leftwich	Georgia Logan
Sabrina King	Pamela Krooth	Anthony Leggett	Carol Loggins
Nicole King-Solaka	Peter Kropp	Shirley Lehman	Logistick
Robert Kinney	Stephen Krucelyak	William and Sandra Lehman	Lois and Richard England Family
Jill Kirby	Nicholas Krudy	Thomas Lehrer	Foundation
Matt and Shirley Kirby	David and Nancy Krunnfusz	The Leibowitz and Greenway	Loop & Tie
Charles Kircher	Charles Kruse	Family Foundation	Hernan Lopez
Kirkland & Ellis Foundation	KTA Relay Team	Leila Christine Grad, M.D.	Kimberly Lopez
Daniel Kirkpatrick	Shirley A. Kubiak	Charitable Fund	Betsy Lord
Paull and Nita Kirkpatrick	Kevin Kuenster	David Leitch	Louis Gordon Memorial Fund
Jacqueline Kirley	Kelly and Laura Kupris	Laurence Leive	James and Anahita Lovelace
Jack Kiser	Kurtzman Family Foundation	Hanne Leloup	William Lucia
Waldemar Kissel	Kuziak Charitable Gift Fund	Judit Lendvay	Lucille Ellis Simon Foundation
Kitt and Dan Goodwin Family	Jung Kwak	Manuela Leonhardt	Claire Ludwig
Private Foundation	Carolyn Kwalick	Peter Leopold	Joy Luecke
Tory Kittles	Herbert and Lai Kwok	Mary Lepley	Starnasia Lukes
Jessica Kivett	Barbara Kyse	Rebecca Lerner	Lumabel Charitable Fund
Hersch Klaff	Theresa Lacina	Daniel Lessin	Lundbeck Charity Trust Account
Jerome Klafta	Lafferty Donor Advised Fund	Kenneth Lester	Lyle Family Charitable Fund
Rachael Klein	Richard Lagravenese	Wai-Man Leung	M3 Dance
Rebecca Klein	Linda Lakin	Benjamin Levin	Frank Mabante
Sharon Klein	Katie Lalla	Lauren Levin	Marjory Mac Quarrie
Klein Family Fund	Amy Lalonde	The Levin Gruber Fund	Alexandra MacCraken
Michael Kler	Mark Lambert	Jared Levinson	Patricia Macholl
Michael Klinkenberg	Janice Lancaster	Bryan Levy	Joe Machota
Klintworth Family Foundation	John Lane	Howard Levy	Sheila and James Mack
Eric Knapp	Kathaleen and Kenneth Lang	Karen Levy	Edith Mackie
Wolf Knapp	Patricia Lanman	Brenda Lewis	Scott Macleod
Tiffany Knaul	Bette Large	Maryam and Josh Lieberman	William Macmillan
Joel Knight	Joseph LaSala	Brandon Liebman	David Maganza
Nicholas Kniveton	Brian Laskowski	Lillian and Bob Anderson	Shalene Magee
Wendy Knopf	Brian Last	Giving Fund	Michael and Michelle Maher
James Kobs	Natalie Laszewski	K. Michelle Lind	Arifa Majeed
Larry Koch	Omar Lateef	Randy Linder	The Makana Fund
Deborah Koeffler	Stephen Latter	Peggy and Bill Lindsey	Makefield Software &
Mary Koeppel	Martha Lawlor	Link Logistics Real Estate	Technology Services, LLC
George and Jutta Kohn	Lawrence Family Fund	Holdco LLC	Malek's Pizza Palace, Inc
Sally Koons	Janis Laybourn	Bill Lippe	Marilyn Malik
Viviane Kostin	Billy Lazarus	Joseph List	Jonathan Malkin
Kotecha Family Fund	Quinn Le	Sheralyn Listgarten	

Manny and Ruthy Cohen Foundation Inc	Christopher McCormack	Sally H. Michaels	Elizabeth Morris
Carlos Manzanares	Jean McCormick	Michelle Judson & George Barry Hembree	Michael Morris
Pete Manzo	Kathy McCormick	Charitable Giving Account	Ruth Mort
David March	Emily and Fred McCoy	Michelle LeMay	William Mosakowski
Marci and Martin Karplus Family Foundation	Inbal McCullough	Philanthropy Fund	Moses Ip
Nathalie Marciano	McCullough Construction	Susan Michelson	Moskowitz Family Foundation
Gregory Marcus	The McDonald Family Fund	Linda Mielke	Steven Mosley
Leo Marcus	James McDougle	Sandra and Gary Mihelish	Stacey Moss
Margaret H. Hamer #1 Fund	Kaloshini McEvoy	Carolyn Miller	David Mossman
Margaret O. Joy Designated Fund	Suszi and Andy McFadden	Chris Miller	MRC Full Circle Foundation
Marilea Larm Trust	Kathleen McGauran	David Miller	MS Consultants Inc
Mark & Polly Charitable Fund	Elizabeth McGinnis	Dennis Miller	Margaret Mueller
The Mark Heiman Family Foundation	Mary McGrail	Joe Miller	Thomas Mueller
Marketing GR	Katie McGrath and JJ Abrams	Kathleen Miller	Suparna Mullick
Allison Marrasso Furnanz	McGuinn Family Fund	Kristie Miller	Brian Mulroy
John Martin	Don McIntyre	Michelle Miller	Heidi Munro
Steve Martin	Heather McKay	Nancy Miller	Sallie Muramoto
Jason Marx	Michael McKee	Paul and Mary Ann Miller	Mark Murawski
Rick Marx	Rebecca McKee	Richard Miller	Molly Murphy
Mary and John Grant Foundation	Bonnie McKeever Gosline	William Miller	Sean and Karen Murray
Mary Cooney and Edward Essl Foundation, Inc.	Steven McMahan	Miller-Furst Family Trust	Thomas and Musa Mayer
Pasquale Mascaro Jr	Wendy McMillan	Milne Family Charitable Gift Fund	Musca Family Charitable Fund
Mashuri Clark and Candice Gottlieb-Clark Charitable Gift Fund	Michael McNamara	Maida Milone	John Muselmann
Josiah Mason	The McPeak Giving Tree	Minnetonka School District No. 276	Kalimah Mustafa
Michael Mathe	Kathy McQuiggan	Michele Mirassou	Gordon and Diane Myers
Mathematica Policy Research, Inc.	Adrienne McReynolds	Kim Mitchell	Naida S. Wharton Foundation
Lynn Matheny	Mary G. McShane	Sarah Mitchell	Nader Nakhleh
Allan Matusевич	McSwane Family Charitable Fund	Mitchell Gold + Bob Williams	The Naomi Kiser Charitable Remainder Trust
Gerald J. Mauch	Natasha McVeigh	Nico and Jamie Mizrahi	Cindy Narcomey
Christine and Fred Maxfield	Amy Meadowcroft	MMS PHCG Brand	Kalpana Nathan
Robert May	Marilyn Meadway Soule	Esmail Mobarak	The National Institute For The Clinical Application Of Behavioral Medicine
Mindy Mayhue	Jacqueline and Denis Mee-Lee	Tim Mock	Amanda Navarro
Mays Family Foundation	Meeting Play Inc	Jim Mode	Benjamin Neale
Roberta McAlear	Cara Mehrens	Larissa and Brian Modesitl	Priya Needs
Michael McAndrews	Edward Meigs	Karen Monborne	John and Karen Needy
Mary McAvoey	Susan Meisel	Moncher/Katz Family Fund	Ivy Nehamkin
Bonnie McCabe	Eleonore and Ray Meline	Tammy Monson	C. Michael and Linda Nelson
Debra McCalla	Sara Meltzer	Jack Montagu	Bruce and Roberta Nemer
Mary McCallum	James Menges	Jodi Pais Montgomery	Katelyn, Lindsey and John Nerbonne
John McCarthy	Andrew Menke	Kendall B. Montgomery	Stephen Nesi
William and Cheryl McCartney	Auden Menke	William Montgomery	Lori Neumann
Dianne McCauley	Janey and James Menner	Lisa Moon	Ben Newell
Richard McClure	Rodney Merchant	Chris and Laurie Moore	Jackson Newhouse
	Meritex Enterprises, Inc.	Hilary D. Moore	Jeffrey Newhouse
	Larri Merritt	Florence and John Morello	NFL Foundation
	Chris Messina	Melinda Morey	Diep Nguyen
	Anna P. and Raymond Meyer	Betty and Don Morganstern	Thao Nguyen
	Marjorie Meyer	Bill Morkill	Michelle Nicholas and Family
	Kristen Meyers	William and Mary Sue Morrill	
	Wendy Meyers		
	Lisa Miao and Wing H. Weng		

Victoria and Earl Nied	Jan Oster	PGT Industries, Inc.	Pratt Family Fund
Arthur and Sheila Nielsen	Mary Owens	Thien Pham	James Price
Alan Nilsen	P2 Foundation Inc	PHGB Charitable Fund	Martie Price
Connie Nine	Prakash Palimar	Philip and Daniele Barach Family Foundation	Susan Price
Vincent Noh	Panorama Global	Philip M. Friedmann Family	Eric Pride
Jenny Nolen	Art Papas	Bob Phillips	Pritzker Pucker Family Foundation
Nonna's Garden	JoAnn Paquette	Edyth Phillips	Harrison Probst
The Noom Foundation	Mary Parent	Doris Piatak	Professional Risk Management Services, Inc
Erick Nordan	Daniel and Linda Park	Pick Charitable Account	Progress Software Corporation
Linda and John Nordin	Kami Park	John Pickering	Francine Protogere
J. Andrew Norelli	Bonnie Parker	John Pickett	Karli Provost
Ann M. Norman	Nancy Parker	Jane Picot	Dina Pully
Northrop Grumman Corp. Charity Trust	Michael Parrent	Idonna Pieper Nelson	Ann Megan and Greg Pursell
William Notz	Chris Parrington	Kay Pieringer	Thomas Pusateri
Frank and Marion Novak	Parry/Frey Family Fund	Daniel Pietroske	Mary Sue Putzulu
Kelly Bush Novak	Rebecca Parsons	Gabrielle Pilo	Sarah Qualley
Marion Novak	Nicolas Partipilo	Emily Pingsterhaus	Michelle Quillin
Kim Novak Malloy	The Pas Family Charitable Fund	Larry and Nancy Piotrowski	Ricky Quintana
Marisa Nuffer	Pastorfield Trust	Vanessa Pitts	Michael Raabe
Addie Null	Neelam Patel	The Pixley Hill Foundation, Inc.	Rabaut Family Foundation
Amy Null	The Pattis Family Foundation	Plante Moran	Patricia Raber
Karen Nusbaum	Paul and Judy Ulland Family Fund	Linda Plaskota	Race Roster
Kristine Nyland	The Paul F. and Mary Anne McLaughlin Family Foundation	Andrew Platon	Rachel and Paul Jacoby Rosenfield Fund
Oakdale High School	Paul Irwin Nelson and Bonnie Ann Nelson Trust	Margaret Platt	Bill Radue
Suzanne Oban	James Paulson	Riska Platt-Wanago and William Wanago	Harvey and Carol Raff
Lance Oberlin	Justin Pava	Sam Plenio	Joe and Joyce Raine
Gerald O'Connell	Ethelyn Payne	Matthew Plow	Ralph & Gail Willner Giwerc Giving Fund
Carolyn O'Connor	PC & KVF Foundation Cliff	Plumbers & Steamfitters Local 131	Evelyn Ralston
Mary O'Connor	Lenore Pearlman	Francesca Pojdl	Archana Ramaswamy
Margaret O'Donnell	Irene Pecuszok	Polly A. Levee Charitable Trust	Alexis Ramos
John Oglesby	Kalah Pelka	Jason Pomeranc	Ramsay/Burrough Family Fund
Anne O'Keefe	Jacinto Pena	Pomerantz Family Charitable Fund	Nerlene and George Ramsey
Frances O'Keefe	Penzeys Spice Company	Gregory Pomes	Christine Randazzo
Pat O'Leary	Jim and Susie Perakis	James Poole	Rank Crankers LLC
Olga G. Leifert Trust	Jamie Perez	J. Aaron Popham	Daniel Rappaport
Jeffrey Olgin	The Perisic Family Fund	Robin Poppe	Pamela A. Rask
Rozanne Oliver	Robert Permut	Jane Porterfield and Gerry Pastor	Frances Rassin
Marilyn O'Loughlin	Lauren Permuy	Don Posey	Michael Ratner
Carolyn Olson	Kasey Perrin	Jeff Postle	H. and S. Ravensvcraft
The Olson Family Foundation	Mary Perschy	Joseph Potempa	Hiroko Rawald
Sarah Oltmann	Celeste, Douglas and Eric Petersen	William and Mary Jo Potter	Rebecca L. Rawls
Janet O'Malley	Randy Petersen	Potthoff Family Foundation	Michael and Christie Raymond
Brian O'Mara	Anne Marie Peterson	Wendi Powell	The Raynie Foundation
Stacy O'Neil	Susan Peterson	Jerold and Karen Powers	Gertrude Reagan
Elizabeth Oney	Harold Petit	Pamela Powers	Siobhan Reardon
Oppenheim Family Fund	Chad Petroff	James Pratt	Shlomo and Tamar Rechnitz
Nancy P. Orbison	Cynthia PettDante	Jenna Pratt	Jonathan and Ashley Reckford
Mary E. Orfield	Andrew Pfau		Cynthia Rector

The Redante Family Foundation	Carla Rodriguez	James Ryan	Kristopher Schroeder
Jonathan Redgrave	Lisa Rodriguez	Fadie Saad	Paul and Hope Schroy
James and Margaret Redka	Rebecca Rogers	Kalvin Saccal	Celia and Leonard Schuchman
Mark Reed	Heather Rohan	Greg and Rochelle Sachs	Brian Schultz
Reed Family Fund	Keith and Connie Rohman	Hiram Sachs	Marian Schulz
James Reesman and Alison James	Michele Romaniello	Violet Sadeghi	Gunther Schumacher
Judith Regner	Steven Romick	Gary Sadler	Mark Schupack
Mary Ann Rehnke	Ruth Ronning	Matilda Sagaas	Judah Schwimer
Amanda Reilly	Christopher Root	Robert Saibic	Schwartz Foundation
Brenda Reilly	Heather Rorer	Nelson and Missy Salabarria	Joann Schwentker
Eileen Reilly	Rosalyn C. Richman Giving Fund	Anne and Lloyd Salemo	Belkis Sclafani
James Reilly	Jennifer Rosdail	The Salice Family Foundation	Scott Family Fund
Elizabeth Reimann	Seth Rosen	Roger Salomon	Scott Laboratories Inc
Susan Reimer	David and Dory Rosenberg	Peter Sam	Donna Searcy
Ann Reinhard and Fred Kelsven	Sonya Rosenfeld	Samek Family Fund	George Seaver
Joel and Barbara Renbaum	Daniel Rosenthal	Brandon Sanders	Carolyn Sefcik
Luis Renova	Natalie Rosenthal	Greg Sanders	Effie Seiberg
William Resch	Richard Ross and Jane Shetler Ross	Louis Sanders	Henry and Dorothy Seibert
Reve Realtors	The Ross Family Fund	The Sandman Family Fund	Frank Seidman
Adam Reynolds	Steven and Mary Roth	Marilyn J. Sanford	Helen and Alfred Selgas
Liesa Reynolds	Deborah Rothman	Sans Gene Studios, LLC	John Sellery
Linda Reynolds	Rothman Charitable Giving	Berge Sarkissian	David Seltzer
RHS Foundation	Jeremiah Rothschild	Marian Sassetti	Frank Selvaggi
Marilyn and Joe Ricci	The Rothwell Family Charitable Fund	Kenneth and Melinda Sauders	Raymond and Catherine Sementini
Allen Rice	John Rough	Ken Savio	Beth Senne-Duff
Joshua Rice	The Rousseau Family	Ian Sax	Daniel Sennett
Karla Rice	Graham Rowbottom	Stephen Sayegh	Richard Serra
Luke Rice	Florence Rowe	Laurel and Christopher Scarlata	James Seruto
Dorothy Rich	James Rowe	Caroline Schaefer	Don and Carol Schaefer
Jean and John Richardson	Allyssa Rowland	Don and Carol Schaefer	Wendy and Michael Schaefer
Julie Richardson	Rowland Family Charitable Trust	George Schaefer III	George Schaefer III
Donald Rick	RPG Limit Break	Matthew Schainker	Matthew Schainker
Kimberly Ridge	Lili Ruane	Eric Schieber	Eric Schieber
Susan Ridgley	Gary Ruben	Jean Schiro-Zavela	Jean Schiro-Zavela
Carmen Riggs	Ruby T. Nees Revocable Living Trust	Paul Schlesinger	Paul Schlesinger
David Ripley	Ann Ruchhoft	Shirley Schlinger	Shirley Schlinger
Jefferson Risner	Mari Carolyn Rucker	Joanne Schlinkert and Court Houseworth	Joanne Schlinkert and Court Houseworth
Maureen and Alfred Ritter	Robert Runett	John Schmidt	John Schmidt
Eligio Rivas	Gretchen Rush	Karen Schnauffer	Karen Schnauffer
George Roach	Elan Ruspoli	William Schneider	William Schneider
Cierra Robbins	Nancy Russell	Susan Schneiderman and Kenneth Korman	Susan Schneiderman and Kenneth Korman
Robert E. Gallagher Charitable Trust	Claudia Rustad	Thomas Schnitzer	Thomas Schnitzer
Kim Roberts	Rustan and Gwendolyn Leino Foundation	Steven Schoenecker	Steven Schoenecker
Terrence Roberts	Elizabeth Rutana	Schoeneckers, Inc.	Schoeneckers, Inc.
Terin Robertson	Ruth & Harvey Gelfenbein Charitable Foundation	Ted and Shelley Schoettinger	Ted and Shelley Schoettinger
McLouis Robinet	Ruth Ann Hyson Charitable Trust	School District of Johnson Creek	School District of Johnson Creek
Wanda Sue Robinson	Michelle Rutman	Jessica Schrieber	Jessica Schrieber
Tobias and Elaine Robison		Beth Schroeder	Beth Schroeder
Elizabeth Roche		Judy Schroeder	Judy Schroeder
John Rochford			

Short Survivor's Trust and Estate of Peggy L. Short	Sol and Hilda Furst Foundation	Manette and Donald Storlie	Donald Tempkin
Short-Axler Philanthropic Fund of the Atlanta Jewish Foundation	Jerry Solomon	Dusty Storrer	Christine Ten Eyck
Kevin Shunta	Joan Solotar	Debra Strahan	Bradley Tenenholtz
James Shupe and Margaret Miesch	Daniel Sommers	John Stringer	Judi A. Teske
Shutterbugs 4 Charity	Gregory Sommers	Mary T. Stringer	The John B. Robertson, Jr. M.D. Fund
Jennifer and Curt Sidden	Jonah Sonnenborn	David Stromberg	The Pay It Forward Fund
Jonathan Siegel	The Sonya Moore-Wells & David Wells Charitable Fund	Strong Foundation of New York	Theodore Cross Family Charitable Foundation
Silton Family Foundation	Matthew Sorrentino	Cindy Stull	The Thom Family Foundation, Inc.
Scott Silver	Laura Soskin	James Sturdivant	Ethan Thomas
Silver Mountain Foundation	Michael Sottile	Samuel Sturgill	Julia Thomas
Jeanne Silvers	The Spark Foundation Fund	Ivan, Clara and Sara Ann Stutzman	A. Metz Thomson
Maria Simeone	Amy Speas	Sammy Sucu	Elizabeth Thornton
Simmonds Giving Fund	Margo Speciale	Catherine and David Sullivan	Patricia Thorwaldson
Judy Simmons	Kyle Speer	Janet Sullivan	Three Sisters Foundation
Stephanie Simon	Spenciner Family Fund	Ross Sullivan	Timothy J. Hegedus Irrevocable Supplemental Needs Trust
Simone M. Vogler Trust	Maya Spivak	Mary Summers	Lucinda Tischer
Betsy Simpson	Splitt Marital Trust	Sunnies Collective	Peter Toal
Roger Simpson	Rita Spring	Susan E. Fisher Revocable Trust	Neil Tockman
Stephen and Heide Sims	Brenda and George Squibb	The Susan Isabel Foundation	Tom & Carolyn Hamilton Family Foundation
Sharon Sindilaru	St. Stephen's Lutheran Church	Susan R. Baker Fund	Tom and Wendy Coleman Family Foundation
Mitchell Singer	Lila Staab	Susan Stavis Rahn Charitable Giving Fund	Lillian Tomlinson
Amar Singh	Stabliish Foundation	The Susan Zirkl, z"L, Memorial Charitable Foundation	Alexander Ton
Prerna Singh	Brandon Stafford	Janet and Myron Susin	Aurelio Topete
Puneet Singh	David and Nancy Stafford	Joshua Sussal	Karissa C. Torcom
Joanna Skinner	Edward Staggs	Joyce Sutterer	Larry and Andreyra Tornes
Paul Slager	Emily Stanley	Andrew Suzuka	Jemal Touba
Jason Sloane	Stanley Shalom Zielony Foundation	Swain/Zwibelman Family Foundation	Bryan Tracy
Annette and John Smallwood	Stantec Consulting Services	Ann Swart	Rebecca Tracy
Jennifer Smallwood	Charmelle Staples	Beau Swayze	Cathy Trageser
Christine Smiley	Jenna Stark	Gillian Sweeney	Alexandra Travers
Sheryl Smiloff	Mindy Stark	Sweet Bay Foundation	Charles Trent
Edward Smith	Peter Starkey	Michael R. Swift	Jean Trester
Jeanne Smith	Cindy Stavitsky	The Taddiken Family Fund	Marc Tretin
Krista Smith	Molly Steines	Caleb Talbot	Trois Coeurs Foundation
Marc Smith	Christian Stella	Stella Taldone	Barbara Trumbo
Rebecca Smith	Michael Stephano	Matt Tamayo	The Trustees of Westminster School Inc
Ronald and Christine Smith	David Stern	Tate & Lyle Ingredients Americas LLC	Aaron Tse
Valerie W. Smith	Gary Stevens	Donovan Tatum	George Tucker
Robert Smyth	Michael Stevens	Linda Tatum	Tuckman Family Charitable Trust
Patricia Snickenberger	Tyler Steward	William Tausig	Kevin Tuhy
Stacey Snider	Jeb Stewart	Marc Taxman	Jacob Tuonto
Peter and Sara Snoek	Stewart R. Mott Foundation	Taylor Family Foundation	Darla Turlington
Sheryl Snyder	Wendy Stocker	Team Daniel Running For Recovery	Joseph Turner
Thomas Snyder	Elizabeth Stockstill	Teapot Foundation	Stephen T. Turner
Sobecki Family Foundation	Michael Stockton	Jane and Mark Teasley	William Turner
Taiyo Sogawa	Marilyn and Gunter Stoll		William Tweed
John and Margaret Sohm	Holly and George Stone		
Soho Studio LLC	Justin and Samantha Stone		
	Ryan Stoner		
	Alyson Stoner-Rhoades		

Phil and Jeanne Tweedy	Susan Wallace	Mark Wieder	Tom Woods
Donald Tyler and Ingrid Johnson-Tyler	Adam Wallach	Joel and Diane Wier	Cindi Woolery
Donald Tyler	Carl and Judy Walsh	Mayra Wiessner	Worley Revocable Living Trust
Liv Tyler	Shari Walsh	Richard Wilbur	Carter and Wendy Wray
Samantha Tyler	Anna Wang	Clifford Will	Harrison Wray
Daniel Tynan	Catherine Wang	William and Carol Cooke Family Fund	Wendy Wray
Tyndale House Publishers	Judy Wang	William and Gertrude Shelley Family Foundation	Darien and Laura Wright
Donald and Susan Ullmann	Pat Wang	William H. Harris Indenture Trust	Sarah Wright
Willy Unterkoefer	Judith Ward	William Z. Putnam Charitable Fund	Shirley Wright
Unum Group	Karen Ward	Beatrice Williams	The Wright Family Charitable Fund
Mary Uricchio	Eric and Karin Warden	Jim Williams	Yagan Family Fund
Richard Usher	Jeffery Warren	Josh Williams	Cooper Yagle
UW Metro Chicago	Washington Township High School	Mary Beth Williams	Yarbrough Family Foundation
Victor Uyechi	John Watterson	Sara Williams	Yeager Family Giving Fund
Brian Vail	We Ship Express	Zach Willing	Frederick H. Yorra and Susan R. Young
Carol Valcourt	Weas Family BWAG	Karen I. Wilmer	Caitlyn Young
Valley Vista High School	Robert Weber	Wilmot Wheeler Foundation, Inc.	Virginia Young
Matt Van Fossen	WebMD	Aletta Wilson	Kim Yourman
Robert J. Van Lanen	Pat Webster	Diana Wilson	Kimberly Yukolis
Valerie Van Ostran	David Weeks	Edward and Barbara Wilson	Janice Zahrlly
Vanda Pharmaceuticals Inc	Alexander Weightman	Robert Heggie Wilson Jr.	Gary and Darlene Zak
Valerie Vaughn	Dawn Weill	Taylor Wilson	John Zakelj and Bonnie Watkins
Joseph and Rosemary Vecchio	Linda Weinberg	Winans Family Gift Fund	Donna Zalichin and Barry Kramer
Patrick Veltri	Holly Welborn	Yasmine Winkler	Mark and Susan Zankel
Denise Venables	Bonnie Welch	Kenneth Winter	Kevin Zegers
Edward Venter	Laura Welch	Kirsten Wirth	Alec Zeidler
Salvatore Ventimiglia	Welch & Forbes	The Witt Charitable Fund	Sandra Zelaya
Loretta Vento	Jeffrey Wells	Witt Kieffer Inc	Pamela Zelnik
Neilesh Verma	Karen and Dale Wells	Van Woeltz	Zelvin Family Fund
Vermeer Sales & Service M.I.	Kristin Welter	Michael Wojcik	Yvonne Zhou
Margaret Vicente	John Wenner	Doug and Christine Wolf	Kevin Zielezinski
Noah Villeroel	Thomas Wessel	William Wolfe and Elizabeth West Wolfe	Ida Ziniti
Larry Vinzant	Gloria West	Charles W. Wolfram	The Zip Foundation
Barb Vonnegut	Mary Grace West	Douglas Wong	Brian and Lori Zrimsek
Derek and Nancy Voskuil	John Weston	Sayuli Wong	Michael W. Zweig
James Vyse	Marilyn Weston	Janet Wood	Lauren Zwitter
The W. O'Neil Foundation	Bryan Whalen	Mary-Jo Wood	Walter Zydlewski
Sara Wagschal	Crystal White	Greg Woodard	Terry Zyga
Sandhya Wah	Tracey White	Ashlynn Woods	Emily Zylla
Jason and Erin Wain	Megan Whiting	Calvin Woods	
Amory Wakefield	Pamela Whittaker	Harriet H. Woods	
Laurie Walcott	Gail Whittenberger		
Amanda Walker	Whittier Trust Company		
Robert and Susan Walker	David Wicklund		

*Listing includes NAMI Leadership Alliance donors at or above the Champion level.

We sincerely regret any inaccuracies or omissions. To notify us of errors, please reach out to NAMI Donor Services at DonorServices@nami.org or 888-999-6264.

Financial Results

2022 Revenue: \$61 M

CONTRIBUTIONS:	\$62.9 M
INVESTMENTS:	-\$3.6 M
IN-KIND DONATIONS:.....	\$0.7 M
DUES:.....	\$0.3 M
GOVERNMENT GRANTS:	\$0.2 M
BOOK PROJECTS:.....	\$0.2 M
SALES:	\$0.2 M
OTHER:.....	\$0.2 M

Revenue
\$61 M

2022 Expenses: \$35 M

Programs & Membership:.....	\$17.6 M
Marketing & Communications:	\$4.5 M
Research, Support & Education:.....	\$4.0 M
Strategic Alliances & Development:.....	\$3.5 M
Government Relations, Policy & Advocacy: ...	\$3.2 M
Administration:.....	\$2.2 M
Total Net Assets:	\$62,590,277

Expenses
\$35 M

In 2022, NAMI received a generous gift from philanthropist MacKenzie Scott. NAMI plans to leverage this one-time gift to advance the infrastructure and capacity of NAMI and its mission critical alliance. In 2023, NAMI is also investing in our programming, HelpLine, and our Alliance's capacity to meet the vast nationwide demand for mental health resources and support.



Help us change the story for millions living with mental illness.

NAMI relies on the support of partners like you to keep our mission moving forward. To share your personal story, learn more about the mental health movement or make a tax deductible gift, reach out to us today.

[NAMI.org/Get-involved/donate](https://www.nami.org/Get-involved/donate)

There are more than 600 NAMI Affiliates and 49 State Organizations across the country offering an array of free support, resources and education programs. To find your local NAMI, visit:

[NAMI.org/FindSupport](https://www.nami.org/FindSupport)



4301 Wilson Boulevard, Suite 300, Arlington, VA 22203-1867
Ph: 703-524-7600

NAMI Helpline

Call: 1-800-950-NAMI (6264) | **Text:** "helpline" to 62640 | **Chat:** [nami.org/help](https://www.nami.org/help)

 @NAMICommunicate |  NAMI |  @NAMICommunicate |  @NAMI

Thank You

Daniel H. Gillison, Jr.
CEO, NAMI



Email
dgillison@nami.org



X
@DanGillison

