



WE ARE ONE NAMI

 **nami**  
National Alliance on Mental Illness

**2023**  
ANNUAL REPORT



# Table of Contents

- Who We Are..... 3
- From the President ..... 4
- From the CEO..... 5
- Youth and Young Adults ..... 6
- In Your Community ..... 9
- When You Need Us.....14
- Advocating for Change.....18
- Sharing Our Stories.....21
- Strengthening Our Presence .....24
- Increasing Knowledge .....26
- Corporate and Philanthropic Partners .....28
- Major Donors and Family Foundations .....29
- Financials.....37
- 2023 Board of Directors.....38
- NAMI Ambassadors.....39
- We are One NAMI .....40





# WE ARE ONE NAMI: WHO WE ARE

The National Alliance on Mental Illness (NAMI) is the nation's largest grassroots mental health organization dedicated to building better lives for the millions of Americans affected by mental illness.

What started as a small group of families gathered around a kitchen table in 1979 has blossomed into the nation's leading voice on mental health. Today, we are an alliance of more than 600 local Affiliates, and 49 State Organizations that work in your communities to raise awareness and provide support and education.

## OUR VISION

NAMI envisions a world in which all people affected by mental illness live healthy, fulfilling lives supported by a community that cares.

## OUR MISSION

NAMI provides advocacy, education, support, and public awareness so that all individuals, and families affected by mental illness can build better lives.

## OUR VALUES

### HOPE

We believe in the possibility of recovery, wellness, and the potential in all of us.

### INCLUSION

We embrace diverse backgrounds, cultures, and perspectives.

### EMPOWERMENT

We promote confidence, self-efficacy, and service to our mission.

### COMPASSION

We practice respect, kindness, and empathy.

### FAIRNESS

We fight for equity and justice.





## Hope for the Future FROM THE PRESIDENT

As I reflect on the past year, I am inspired by the progress we've made as a unified NAMI family. Our shared commitment to improving the lives of individuals with mental health conditions has driven us forward, and 2023 was a year of growth and impact.

In my role as a judge, I witness firsthand the difference NAMI makes in the lives of individuals and families navigating the mental health and criminal justice systems. NAMI's presence in the mental health docket I preside over ensures that those who are struggling receive the support they need. NAMI's presence is a reminder of the power of connection and advocacy.

In 2023, NAMI expanded its reach in other significant ways. Our NAMI Helpline supported nearly 68,000 people, and the addition of Spanish-language resources highlights our commitment to inclusivity. This expansion helps to ensure that no one is left without care, regardless of language or background.

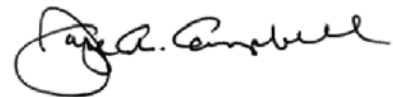
NAMI also made strides in advocacy, driving systemic change at the national level. Every member of Congress heard from NAMI advocates this year, and our efforts helped secure important advancements like improved mental health parity rules. The creation of the bipartisan Senate Mental Health Caucus is a milestone in our fight for comprehensive solutions to the mental health crisis.

Our partnerships with organizations like Delta Sigma Theta Sorority have broadened our reach, delivering mental health resources to more communities than ever. These collaborations are essential to our mission, allowing us to extend our support to those who need it most.

As we look ahead, I am confident that our collective efforts will continue to build a world where mental health is prioritized and treated with the care it deserves. Together, we are creating a future where mental health is valued and accessible for all.

Thank you for your unwavering dedication to NAMI's mission. Together, we are making a difference and will continue to elevate mental health for everyone.

With sincere appreciation,



“  
NAMI's presence  
is a reminder of the  
power of connection  
and advocacy.  
”



# Hope for the Future FROM THE CEO

As we reflect on 2023, I am deeply proud of the strides we've made together as a NAMI community. This past year presented challenges, but with resilience, determination, and a shared mission, we advanced our efforts to make mental health care accessible to all. Together, we moved forward—stronger and more united than ever.

At the core of everything we do is a deep commitment to improving mental health for everyone. Our financial stability has allowed us to expand our reach, deepen our impact, and strengthen the connections that make our movement so powerful. In 2023, we awarded \$6.7 million in field grants to our State and Affiliate organizations, expanded critical programs like NAMI Provider and NAMI Family-to-Family, and provided support through technical assistance requests on public policy and advocacy. Each of these efforts reflects our unwavering focus on elevating mental health and ensuring that care is accessible to all.

One of our most significant achievements was the launch of the NAMI Teen & Young Adult HelpLine, providing free, nationwide peer support to young people seeking resources and someone to talk to. This initiative has already had a tremendous impact, with over 187,000 people accessing NAMI's youth resources this year. In addition, our partnership with Girl Scouts USA introduced the Girl Scouts Mental Wellness Patch Program, engaging thousands of girls in conversations about mental health. These efforts ensure that the next generation of leaders has the support and tools they need to prioritize mental well-being.

But our impact extends far beyond youth-focused programs. This year, we made tremendous strides in supporting diverse communities. Our programs like Sharing Hope, Maniwala, Compartiendo Esperanza and Chai & Chat continue to grow, expanding our reach into Black, Hispanic/Latinx, Filipino, and South Asian communities. These culturally inclusive programs allow us to meet people where they are and ensure that mental health resources are available to all, especially those in underserved populations.

Additionally, our NAMI StigmaFree workplace initiative is helping companies create supportive environments where mental health is prioritized. By working with top organizations, we ensure that mental health awareness and support extend into the places where many of us spend much of our time—our workplaces.

This year, we also saw exciting progress through NAMI's Community Health Equity Alliance, which focuses on reducing mental health disparities in underserved communities.

Key highlights include:

- Expanding partnerships with community-based organizations to improve mental health care for Black and African Ancestry adults.
- Launching pilot programs in California, Georgia, North Carolina, and Texas, with plans to expand to additional states.
- Collaborating with faith-based organizations, advocacy groups, and local leaders to address mental health disparities and promote equity in care.

Our financial health remains at the core of our ability to grow and deliver on these impactful initiatives. A strong financial foundation ensures that we can continue expanding programs, supporting affiliates, and leading mental health advocacy at the national level.

**Some other key accomplishments of 2023 include:**

- NAMIWalks raised over \$14 million across 129 walks, allowing communities nationwide to participate in and support mental health advocacy.
- Elevated mental health awareness by reaching every member of Congress with advocacy efforts, securing critical advancements in mental health policy.
- Increased NAMI's Share of Voice in the national mental health conversation, with NAMI featured in over 100 congressional press releases and key media outlets.

As we approach our 50th anniversary in 2029, I am filled with optimism about the future we are building together. Our work is reaching further than ever before, and with your continued support, I am confident we will keep breaking barriers and making mental health a priority for all.

Thank you for your unwavering support and for being part of this incredible journey. Together, we are creating a world where mental health is valued, and where every person, regardless of their background or circumstance, can access the care they need. Our NAMI family, I know we are moving toward a brighter future.

With gratitude,



“  
At the core of everything we do is a deep commitment to improving mental health for everyone.  
”



## WE ARE ONE NAMI: YOUTH AND YOUNG ADULTS

To help with the mental health crisis among teens and young adults, NAMI officially launched the new NAMI Teen & Young Adult (T&YA) HelpLine in October 2023. **This is a free, nationwide peer-support service providing information, resource referrals, and support to teens and young adults. It provides a safe space for young people to connect with peers who understand their struggles, and offers them resources and information that help.** The Specialists who staff the NAMI T&YA HelpLine are young adults with firsthand knowledge of mental health challenges who are experienced, well-trained, and available by phone, text, or chat to provide resources and guidance, so no one needs to go through their mental health struggles alone.



In 2023, **187,812** people accessed or viewed NAMI's resources for youth and young adults, including more than **30,000** people who received Meet Little Monster, NAMI's mental health coloring and activity book created for young children as a tool for them to express and explore their feelings in a fun, creative, and empowering way. Meet Little Monster, originally created by NAMI Washington, is available in English, Spanish, Arabic, Korean, Vietnamese, and Mandarin.

In Indianapolis, NAMI volunteers are providing Riley Hospital for Children with copies of Meet Little Monster. When hospital volunteers and nurses are talking to parents, they often stop by the NAMI booth to grab useful NAMI brochures and a copy of Meet Little Monster.

# 187,812

people accessed or viewed  
NAMI's resources for youth  
and young adults





## WE ARE ONE NAMI: YOUTH AND YOUNG ADULTS

In late August 2023, NAMI launched NAMI On Campus High School, where campus clubs work to end mental health stigma by holding creative meetings, hosting innovative awareness events, and offering signature NAMI programs through partnerships with NAMI State Organizations and NAMI Affiliates. Since August 21, **more than 20 high school clubs became official NAMI On Campus High School clubs.**

NAMI On Campus at Polk County High School in North Carolina sparked a lot of excitement on their campus. After launching during the high school pilot, they hosted an event where their partner affiliate, NAMI South Mountain, NC, presented NAMI In Our Own Voice, bringing in new members to their club. NAMI On Campus at Polk County High School has plans to make a garden in honor of students who lost their lives to suicide. They hope that this can be a calm place for students to relax and connect with nature.



NAMI and Girl Scouts of the USA (GSUSA) partnered to launch the Girl Scouts Mental Wellness Patch Program, as part of GSUSA's ongoing mental wellness initiative. The patch program was released at GSUSA's National Convention in July 2023. Since its inception, the web page that shares information on the patch program received **over 24,000 page views, and the page to purchase the three different patches is currently number one in page visits and downloads on girlscouts.org.**

**24,000**

**Girl Scouts of the USA  
Mental Wellness Patch  
Program web views**





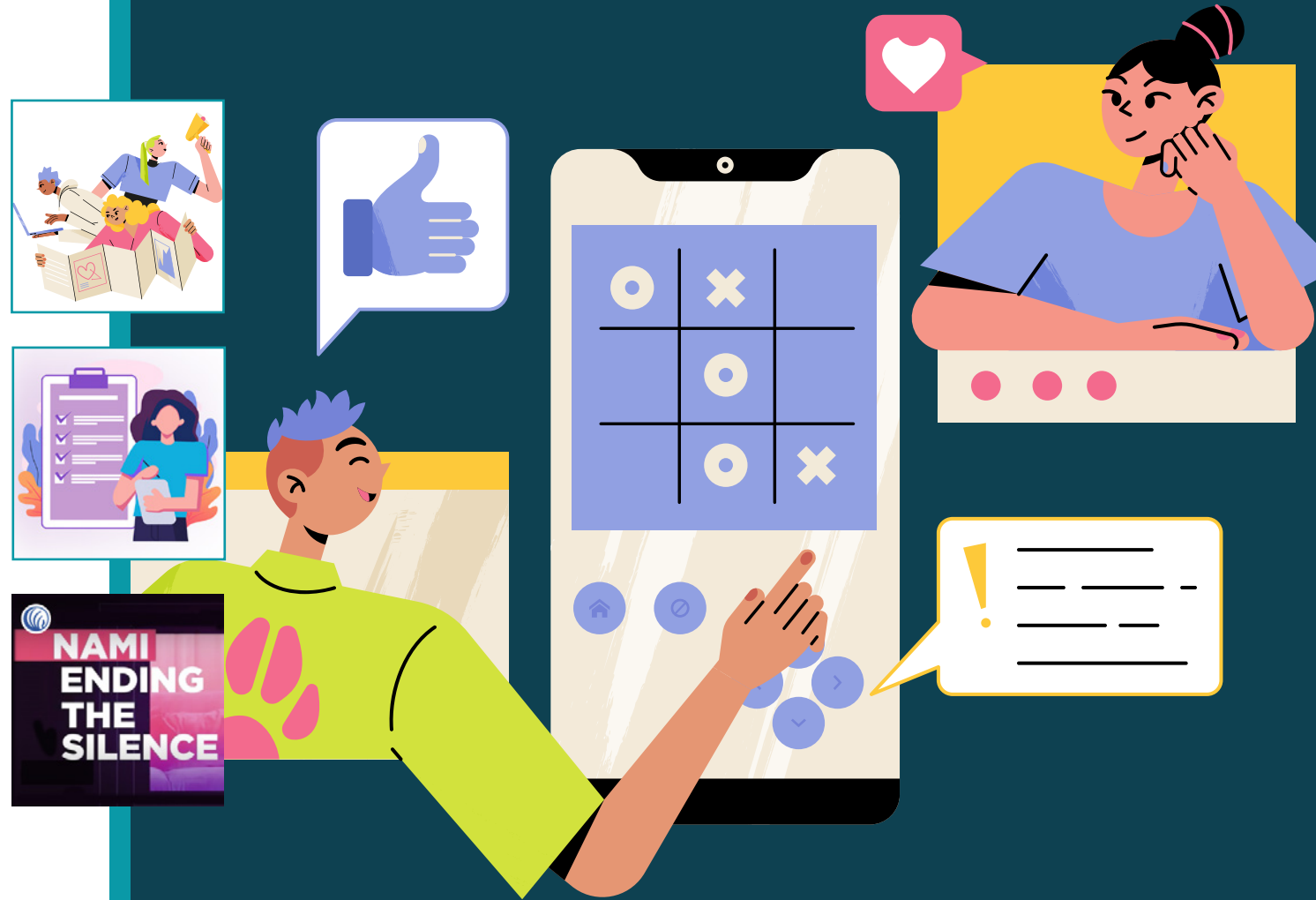
## WE ARE ONE NAMI: YOUTH AND YOUNG ADULTS

NAMI Next Gen 2022 worked to release **Say It Out Loud**, a free online card game that brings young adults closer to their friends through conversation prompts about life, relationships, and mental health. Best played on a mobile device among three to six people, NAMI Say It Out Loud is comprised of three card decks—Whisper It, Say It, and Shout It—with prompts that start at the surface, and dig deeper as you play. From questions about what makes you cringe to how you bring up your own mental health with friends, NAMI Say It Out Loud helps young people explore how they and their friends approach mental health and well-being. Launched in March 2023, Say It Out Loud has had almost 4,000 players in its first six months of availability.

This year, NAMI continued its support for students, caregivers, and educators, releasing 13 new resources for the 2023 back to school season. These resources cover such topics as engaging safely with social media, mindfulness activities for K-12, a guide for trauma-informed active-shooter drills, and more. **Since early August, these resources have had close to 51,000 page views.**

When asked about the most valuable part of NAMI Ending the Silence, an educational program for middle and high school students, one participant responded, **“Talking about how you don’t need to be afraid to open up and ask for help if you need it.”** Another shared, **“I found the most valuable element to be learning that there are resources everywhere around you.”**

**51,000** back to school  
resources page views





## WE ARE ONE NAMI: IN YOUR COMMUNITY

NAMI continues to spearhead the Community Health Equity Alliance (CHEA), a mental health equity initiative that joins community-based organizations and thought leaders as collaborators under the shared mission to improve serious mental illness care for Black/African Ancestry adults. This initiative **furtheres NAMI's commitment to equity and advances equity in access to care in Black/African Ancestry communities**, beginning with California, Georgia, North Carolina, and Texas and expanding to Maryland, Louisiana, Illinois, and Pennsylvania.



**NAMI strengthened its new partnership with Delta Sigma Theta Sorority, Incorporated**, raising mental health awareness and connecting people with mental health resources at their 56th national convention, where NAMI reached 25,000 women. As part of a new initiative with Delta Sigma Theta, **53 college campus Delta chapters submitted applications for partnerships between NAMI and their campus counseling centers** to talk about mental health.

**53**

**Delta chapters submitted applications for a partnership between NAMI and their campus counseling center**

**1 in 3**  
Only one in three Black adults with mental illness receives treatment.





## WE ARE ONE NAMI: IN YOUR COMMUNITY

Sharing Hope and Compartiendo Esperanza, NAMI's outreach programs for the Black/African Ancestry and Hispanic/Latinx communities, continued to grow. These programs are designed to introduce discussions on mental health and wellness through a three-part community conversation series.

**To date, Sharing Hope and Compartiendo Esperanza have trained more than 450 facilitators for these programs,** and NAMI has held Sharing Hope conversations with 12 companies. Sharing Hope and Compartiendo Esperanza can occur in many settings, including faith-based. One pastor shared, "We are so excited to bring Sharing Hope to our church collaborative."

This year, NAMI expanded its outreach programs to the Filipino and South Asian communities. Using the model of Sharing Hope, NAMI adapted the program and created **Maniwala for the Filipino community and is in the process of creating Chai & Chat for the South Asian community.** So far, Maniwala has reached 600 people, and NAMI has received 100 assessments for Chai & Chat to help with its development.



# 450

facilitators have been  
trained by Sharing Hope and  
Compartiendo Esperanza



# WE ARE ONE NAMI: IN YOUR COMMUNITY

In June, NAMI held a National Pride Month Campaign to promote resources related to Pride Month and to build momentum for continued LGBTQ+ support efforts. **The LGBTQ+ community is experiencing increasing rates of mental illness and suicide and increasing obstacles to mental health care, and NAMI wanted to reach an expanded audience of LGBTQ+ individuals and allies to help address this need.** As part of the campaign, NAMI issued a press release that included NAMI's LGBTQ+ policies and stance on gender-affirming care. This release garnered better metrics for potential audience, engagement, and placement than all other press releases from the last two years at NAMI.

**Becky Dempster**  
She/Her  
Mother of three LGBTQ+ children living with mental illness



**Isidro Torres**  
He/Him, Queer  
Depression | Anxiety | PTSD



**Zane Landin**  
He/Him, Bisexual  
Major Depressive Disorder  
Borderline Personality Disorder



**Asia Hale**  
She/Her, Asexual  
ADHD | OCD  
Major Depressive Disorder  
General Anxiety Disorder





## WE ARE ONE NAMI: IN YOUR COMMUNITY

The Pathways to Hope conference, part of NAMI FaithNet, is a chance for communities to build their own grassroots movements to help engage faith communities, mental health providers, and other community partners in building sustainable coalitions in support of people living with mental health conditions. This year, NAMI increased Pathways to Hope registration from 2,832 participants in 2022 to 3,952 participants in 2023.

NAMI began an initiative to start mental health conversations among Black/African Ancestry men. In partnership with the Los Angeles Rams and Children's Institute, NAMI held four conversations attended by 45 fathers. One attendee shared, **"The way your team works in the community is inspiring. This is how it should be done. Thank you for coming into the community."**

NAMIWalks provide opportunities for communities across the country to gather around the rallying cry of "Mental Health for All." **For the third year in a row, NAMIWalks was named a Top 30 Peer-to-Peer event, and in 2023, NAMIWalks raised more than \$14 million.** All funds raised stay in the local communities.

**\$14.64M**  
RECORD-BREAKING  
REVENUE

**129 WALKS**  
RECORD NUMBER  
OF EVENTS

**8,085**  
RECORD NUMBER  
OF TEAMS

NAMIWalks continues to grow, welcoming 13 new NAMIWalks this year. Walk participant registrations paced 18% ahead year over year, and team recruitment is up 11%. "Hosting a NAMIWalks is a great investment in time and will naturally create many meaningful conversations to advance the mission of NAMI to educate, support and advocate mental health for all!"

— Sandra Sorensen, NAMIWalks Finger Lakes, NY





## WE ARE ONE NAMI: IN YOUR COMMUNITY

In 2023, 15 companies participated in the NAMI StigmaFree workplace mental health initiative, demonstrating their commitment to fostering an accepting and healthy culture within their workplace environment. NAMI formed a Workplace Mental Health Advisory Council with 12 members from notable companies across industries. Members include Adobe, Bank of America, Boeing, Creative Artists Agency (CAA), Calm, Google, Hostess, Kohl's, Miraval, OLLY, and The Hartford, as well as an early-career young adult advisor. **Through presentations and panels, NAMI reached 6,560 employees both in person and virtually, with more presentations scheduled before the end of the year.** Workplace mental health continues to be a top concern, with NAMI Affiliates listing it as their third-highest interest on a recent survey. NAMI is rebranding and expanding this initiative to meet growing demand over the next year, helping local NAMI expand their reach and partnerships and supporting more people where they spend their time, which for many includes their workplace.



“I’ve been an active caregiver of my daughter, who has a bipolar 1 diagnosis. The challenges have been bittersweet, yet I would not shy away from continuing to support her. I have helped her get her disability and she is now halfway through receiving her college degree. Through all the hospital visits and meeting doctors along with the eight-week course I took through NAMI, I have gained significant knowledge and will continue to advocate for mental health and wellness for those suffering with mental health issues.”

— NAMI Advocate

# 6,560

employees reached  
by NAMI both in  
person and virtually





## WE ARE ONE NAMI: WHEN YOU NEED US

“I was surprised at how well the person who helped me was able to get me to open up and share. **I was hesitant at first but felt very validated and heard.** The resources were also extremely helpful.”

— NAMI HelpLine user



The NAMI HelpLine is a free, nationwide peer-support service providing information, resource referrals, and support to people living with a mental health condition, their family members and caregivers, mental health providers, and the public. **In 2023, the NAMI HelpLine has provided support to 67,935 help-seekers via calls, chats, texts, emails, and posts, and 250,044 have visited the online NAMI HelpLine Knowledge and Resource Center.**

One person whom the NAMI HelpLine supported is Marta, a caregiver who shared her experience with the NAMI HelpLine: “One night, I was alone in the dark, crying, feeling desperate, feeling hopeless. We had a specific crisis happen, and I just thought this is it. ‘My loved one is going to die.’ Something nudged me to look at my phone, and I just started Googling resources for mental health. NAMI came up, and I immediately called. I was crying. I was not making sense. They really helped me calm down and take a deep breath and express what was going on. **They were nonjudgmental, and they really helped me gain my composure. I grabbed a pen and started making a list of different things I could do. Their guidance gave me a sense of direction.** The resources they provided gave me the hope to be able to help myself, which enabled me to help my loved one. I felt a new sense of hope and purpose, and I was able to run with it from there. That helped me in the journey to help my family member recover from their mental health crisis.”



# 250,000

have visited the online  
NAMI HelpLine Knowledge  
and Resource Center





## WE ARE ONE NAMI: WHEN YOU NEED US

In 2023, NAMI increased the information and support available to the Spanish-speaking community through the NAMI HelpLine by translating over 100 Knowledge Articles on topics like Advocating for Yourself or Someone Else, Young Adults, Mental Health Support & Treatment, Crisis, and more. **Our Spanish Resource Directory offers members of this community culturally specific resources and general resources in Spanish. Overall, Spanish resources within the HelpLine now include more than 200 entries.** NAMI has also hired two additional bilingual staff members to help with the quality assurance and coaching of our Spanish-speaking volunteers.



From January 1 – September 30, 2023, NAMI served 138,176 participants in support groups. Of support group participants who responded to a survey, **88% agreed or strongly agreed that the support group provided participants with resources and skills to make the best treatment decisions for themselves or a loved one, and 91% agreed or strongly agreed that the support group provided them with information and resources that will help manage crisis situations related to mental illness.**

Over the past two years, NAMI has partnered with Kohl's to increase access to our NAMI Family Support Group and our NAMI Connections Support Group to people who identify as ethnically/racially diverse. Through this partnership, 25 new support groups have started that serve the Black/African Ancestry community, the Hispanic/Latinx community, or the Asian American/Pacific Islander (AAPI) community across the country.

**91%**

**agreed or strongly agreed that the support group provided them with information and resources that will help manage crisis situations related to mental illness**





## WE ARE ONE NAMI: WHEN YOU NEED US

Another success story from our support groups is NAMI Contra Costa, which received support from NAMI National and Kohl's to increase its outreach to the Asian American and Pacific Islander and Latinx communities. Over the past year, it has increased the meeting frequency of its Mandarin support group from monthly to bi-weekly, launched a weekly AAPI Teens and Young Adult support group, started an AAPI Connection Support Group, and held one Family-to-Family class and one NAMI Basics class in Mandarin. NAMI Contra Costa County has also increased its Hispanic/Latinx support group meetings from twice a month to every week, provided coverage of the NAMI Contra Costa County phones in Spanish 85% of the time, and held two additional De Familia a Familia programs and two additional Bases y Fundamentos programs. NAMI is thrilled to continue its partnership with Kohl's for another three years, increasing access to both NAMI Support Groups and NAMI's outreach programs for racially/ethnically diverse communities.

When asked what the **most valuable or effective part of NAMI's support groups** is, participants shared, **"Encouragement not to give up and understanding of the difficulty navigating through mental health issues,"** and **"Being able to connect with others that have been there or ones I can help because I have been there."**





## WE ARE ONE NAMI: WHEN YOU NEED US

This year, NAMI launched refresher trainings for NAMI Support Group leaders by providing NAMI State Organizations and NAMI Affiliates with materials and guidance to conduct refresher trainings. NAMI Boulder County hosted a Facilitator Refresher training and shared its appreciation for the materials and guidance. **Of those who attended the refresher and responded to a survey, 100% said they would recommend this refresher to others, found it either useful or very useful, and reported they feel better about facilitating in the future.** One of the state trainers shared, “I wanted to let you know that our support group facilitator refresher was great! People really enjoyed using their own examples for the role plays so that they could discuss difficult moments they had experienced with the group.”

“I chose to become a trainer for NAMI Support Groups because my passion is Family Support Group and the support it brings to families. **This is the lifeline to reach millions that will come through this program well, strong, and able to lead healthy lives and create strong families. NAMI Family Support Group saved my family and our relationships; I want that to always be available to others.**”

— NAMI Family Support Group Trainer



“Five years ago, I took NAMI’s Family-to-Family course and even facilitated a few sessions as well. **What I learned through the course, and through everyone who has been involved with NAMI, has been invaluable** in helping me get through my son’s experience with bipolar disorder today. Thank you, NAMI!”

— NAMI Family-to-Family participant





## WE ARE ONE NAMI: ADVOCATING FOR CHANGE

Every member of Congress heard from NAMI's advocates in 2023, and NAMI has been mentioned by members of Congress 166 times, more than any other mental health organization.

NAMI has engaged advocates to increase co-sponsorship of the 988 Implementation Act, support equitable access to mental health care for the LGBTQ+ community, improve our nation's mental health workforce, and push action on changes like improving inpatient hospital quality of care and strengthening mental health parity enforcement. **NAMI advocates undertook more than 60,000 actions in 2023, including driving a victory in improving Centers for Medicare & Medicaid Services quality measurements for the experiences that people have in inpatient psychiatric settings**, which NAMI has been leading for three years.

As a result of NAMI's collaboration with the White House, a NAMI advocate was selected to share their story at the White House in July, discussing the challenges they faced in getting coverage for specialized mental health treatment. The NAMI advocate introduced President Biden to an audience that included NAMI CEO Dan Gillison, more than 20 current and former members of Congress, half a dozen former and current Cabinet secretaries, and many other leaders in the mental health community. At the event, **President Biden said, "We can all agree mental health care is health care. It's essential to people's well-being and their ability to lead a full and productive life, to find joy, to find purpose, to take care of themselves and their loved ones. It's about dignity."**

**60,000** actions taken by  
NAMI advocates





## WE ARE ONE NAMI: ADVOCATING FOR CHANGE

Following the White House event, the Biden Administration released new rules that will improve mental health parity. NAMI led mental health community engagement around these new rules, creating a portal for advocates to comment. Nineteen partners joined NAMI's parity portal, and more than 5,000 NAMI advocates commented on the need for these new rules — representing nearly two-thirds of all comments submitted on this proposal nationwide!

The work of advocates is driving systemic-level change and improving conditions for those impacted by mental health challenges in the United States. One advocate shared, “**I #Act4MentalHealth because I am a parent of a child who suffers from a severe mental health illness. I have experienced the frustration of finding continuity of care in a healthcare system that is underfunded, understaffed, and not properly serving the population it aims to help.... I volunteer and advocate for NAMI to be part of the solution.**”

On October 17, the U.S. Senate launched a bipartisan Senate Mental Health Caucus. NAMI helped drive the creation of the caucus, and NAMI CEO Daniel H. Gillison, Jr. spoke at the launch. Gillison shared, “Mental health is the bipartisan issue of our time, and it is inspiring to see the establishment of the bipartisan Senate Mental Health Caucus. NAMI is grateful to U.S. Senators Alex Padilla (D-CA), Thom Tillis (R-NC), Joni Ernst (R-IA), and Tina Smith (D-MN) for their leadership on mental health. **“We’re excited to collaborate with the new caucus to build better lives for all people affected by mental health conditions. The caucus will work to find bipartisan, common-sense solutions to address our nation’s ongoing mental health crisis.”**





## WE ARE ONE NAMI: ADVOCATING FOR CHANGE

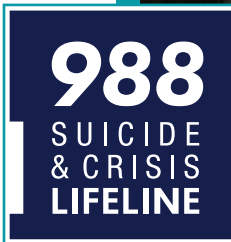
**July 2023 marked the one-year anniversary of 988 becoming available nationwide.** To mark this occasion, NAMI released its latest public opinion poll on 988 and crisis response, finding continuing low familiarity with 988. The survey garnered a wide array of press coverage and interviews for NAMI, including The New York Times, CNN, USA Today, Axios, U.S. News & World Report, and ABC News, among others.

To continue to raise support for and awareness of 988, NAMI continues to welcome new #ReimagineCrisis partners, adding 11 partners over the past year, including the American Academy of Child and Adolescent Psychiatry, the American Counseling Association, the Autoimmune Association, the National Asian American Pacific Islander Mental Health Association, the National Association of Counties, the National PTA, Shatterproof, and the Trust for America's Health. **NAMI and our 53 partners are pushing for effective crisis response systems in every community in the country.**

In June 2023, NAMI convened its #ReimagineCrisis partners in Washington, D.C., for the first #ReimagineCrisis Partner Summit. Attendees dug into the concrete challenges facing our crisis response transformation, including the needs of youth and young adults, embedding equity, building awareness and communications, and improving 988/911 coordination. NAMI is leveraging these sessions to create resources and thought leadership pieces to direct future 988/crisis response improvements. NAMI also partnered with the American Foundation for Suicide Prevention (AFSP) to recognize 17 members of Congress with the 988 Crisis Response Champion Awards as part of this event.

Also in the summer, **NAMI partnered with The Hill, a Capitol Hill news organization, to host “Dialing into Mental Health: One Year of the 988 Suicide & Crisis Lifeline” to discuss what still needs to be done to ensure everyone can access the help they need.** Speakers included U.S. Secretary of Health & Human Services Xavier Becerra, Sen. Catherine Cortez Masto (D-NV), and NAMI Chief Advocacy Officer Hannah Wesolowski. That same day, every congressional office received a copy of POLITICO, a widely read Capitol Hill news source, with a full-page ad from NAMI urging Congress to fund 988.

NAMI's 988 State Legislation Map continues to be a heavily utilized resource, linked to by SAMHSA and many news organizations, including KFF Health News, CBS News, Axios, Forbes, and Roll Call since May. **The map has had more than 20,000 page views so far in 2023.**





## WE ARE ONE NAMI: SHARING OUR STORIES

NAMI remains the leading voice for sharing the lived experience of mental health conditions. During May — Mental Health Awareness Month — NAMI National leadership and staff were featured in two on-camera interviews and two podcasts, and were quoted in 12 articles. The coverage included The New York Times, Capital B, Clear & Vivid Podcast with Alan Alda, Men’s Health (print edition), and Yahoo! News. Topics ranged from the importance of access to mental health care to the 988 Suicide and Crisis Lifeline. NAMI also had notable media mentions on or in Black Information Network, CBS Mornings, Everyday Health, Forbes Health, People, SELF, WebMD, Yahoo! Life, and Yahoo! Entertainment.

NAMI additionally had more than 250,000 page views for the Mental Health Awareness Month landing page, more than 17 million social media impressions, and more than 500,000 social media engagements. **The number of our total social media followers has now reached 1,300,000, a growth rate of 17%.**

NAMI produced 23 podcast episodes of Hope Starts With Us in 2023, featuring three NAMI National staff members, one NAMI field staff member, one member of NAMI’s Service Members, Veterans and Families (SMVFC) Council, and three NAMI Ambassadors. During Suicide Prevention Awareness Month, we featured Zak Williams — son of the late actor Robin Williams — on a podcast episode about suicide awareness.



In March, Sinclair Broadcast Group and NAMI partnered on “Sinclair Cares: Mental Health Support + Hope,” a nationwide campaign to encourage mental health awareness, especially among young adults. The partnership included PSAs across Sinclair’s 185 TV stations in 86 markets, a Town Hall broadcast featuring NAMI’s Chief Medical Officer, and multiple news stories to connect viewers with NAMI Affiliates for resources and information. **Overall, the campaign reached an estimated 80 million viewers.**

↑ **17%**

social media growth rate





## WE ARE ONE NAMI: SHARING OUR STORIES

NAMI's flagship publication, the Advocate, won Graphic Design USA's 60th anniversary Inhouse Design Awards for our redesign of the publication.



NAMI also overhauled NAMI SMARTS for Advocacy, a hands-on training program used by Affiliates nationwide that helps people living with mental illness and their allies transform their passion and lived experience into skillful grassroots advocacy.

This training helps people tell their stories, as one advocate shared, “I #Act4MentalHealth [because] I have struggled for 20 years to find mental health care in my community for my son who lives with bipolar disorder and my stepdaughter who has lived a lifetime with chronic co-occurring disorders. Everyone deserves to get the care they need, but it’s not readily available. The barriers to getting qualified and knowledgeable professionals are daunting and at times very scary. I have to advocate at every turn for my family; I can’t let up for a minute, because the damage from one wrong medication or missed appointment with a specialist could be devastating to either of them. **NAMI is the answer for stigma-reduction, awareness, and getting basic mental health education to our communities!**”



# SMARTS

---

## For Advocacy

## Teacher Manual



## WE ARE ONE NAMI: SHARING OUR STORIES

In the fall of 2022, NAMI published its first book, “You Are Not Alone: The NAMI Guide to Navigating Mental Health.” **The book, by NAMI’s Chief Medical Officer Dr. Ken Duckworth, quickly became a best-seller, selling more than 41,000 copies in its first year.**

Dozens of celebrities, influencers, and leaders in their fields shared their stories to help combat stigma and raise mental health awareness. **Actress Alessandra Torresani shared her story** about maternal mental health and bipolar disorder on episode 23 of NAMI’s podcast, “Hope Starts with Us.” **Fitness Influencer and Mental Health Advocate Kendall Toole, and Actor Zak Williams** also appeared on “Hope Starts with Us,” sharing their stories on episode 30 for Suicide Prevention Awareness Month.

**NFL Veterans and Mental Health Advocates Soul Cole and Marcus Smith** (pictured right) presented a webinar to Amazon employees on men’s mental health.

**Entrepreneur, Reality Star, and Advocate Sutton Strake** did an Instagram Live for Suicide Prevention Awareness Month.

NAMI ambassadors represented NAMI at ADOBE Max (Corinne Fox) in October and with Amazon employees (former NFL players Marcus Smith and Soul Cole).

Sterling K. Brown, a well-known actor and NAMI ambassador, led NAMI’s appeal during September’s Suicide Prevention Awareness Month in September.

NAMI continues to be a resource for the entertainment industry, and NAMI resources were featured in several shows and movies in Q4:

- “Shining Vale” (Starz)
- “Sin City Murders” (Oxygen)
- “BMF” (Starz)

# 41,000

copies of **You Are Not Alone** sold





## WE ARE ONE NAMI: STRENGTHENING OUR PRESENCE

NAMI knows that providing strong mental health support and raising mental health awareness requires resources. This year, we launched the pilot phase of our NAMI Do-It-Your-Way program. **This new fundraising program will allow participants across the country to start DIY fundraising campaigns for either NAMI National or a local NAMI Affiliate.** Eighteen NSONAs have joined NAMI National in the pilot as we test the platform from October 2023 through March 2024.

**To date in 2023, NAMI has awarded \$6.7 million in field grants across the country.** This funding is helping NAMI nationwide to build and strengthen their organizational capacity to maintain and sustain strong, stable, and healthy organizations that can deliver programs, raise awareness, provide support, and conduct advocacy in the communities they serve.

“The grant from NAMI National has allowed our organization to increase its long-term capacity by funding a human resources professional to update and revise NAMI Minnesota’s Employee Handbook. This effort is critical to providing staff with the support and guidance needed for staff retention, and to help develop a workplace culture that is inclusive, diverse, and welcoming to all.” — Sue Abderholden, NAMI Minnesota

“Thank you for your help with our Maui Strong Support Groups. We appreciate the support and hope to give back with the info we’ve developed to target disaster survivors’ mental wellness needs and increase the visibility of NAMI in our communities.” — Anonymous field survey responder

Additionally, **NAMI awarded grants for the expansion of NAMI Provider and NAMI Homefront and to expand NAMI Support Groups in diverse communities.** Along with the financial support provided, NAMI National offered 15 technical assistance calls with grantees covering such topics as NAMI database training, exploring outreach options, leader recruitment, meeting grant deliverables, and program best practices.





## WE ARE ONE NAMI: STRENGTHENING OUR PRESENCE

NAMI also provides policy guidance and resources to the field. This year, **NAMI National answered more than 200 technical assistance requests on public policy and advocacy issues from the NAMI field.** NAMI also created and distributed a toolkit for the Alliance on advocating to support LGBTQ+ mental health and stopping harmful practices, which was released in June during PRIDE Month. **On September 13, NAMI released the 2022 NAMI State Legislation Report, showcasing significant state mental health legislation enacted in calendar year 2022.** The report explains overall trends in state-level mental health policymaking and also contains Advocacy Spotlights highlighting the efforts of several NAMI State Organizations to pass key legislation.



In 2023, NAMI increased the number of state trainers for NAMI National Signature Programs by offering six Training of Trainer sessions. By the fall of 2023, these sessions had produced 215 new state trainers who will train program leaders in their states to deliver NAMI's eight signature programs locally. These programs include NAMI Basics, NAMI Family-to-Family, and NAMI Homefront.

“Training of Trainers is an important part of NAMI growth, because it sends out one person at a time that will influence and train a hundred more, and then those will touch thousands. I love exponential math when it improves lives.”

— NAMI National trainer





## WE ARE ONE NAMI: INCREASING KNOWLEDGE

This year, the Adobe Foundation and NAMI released a new study, “Creative Approaches for Managing Mental Health,” which surveyed nearly 2,000 people over age 13 across the U.S. on how creativity makes a powerful impact on mental health, contributing to an improved sense of confidence, reduced feelings of stress or anxiety, and improved overall mental well-being. **The study found that 63% of people say creativity can improve one’s sense of confidence in their abilities, 61% say creativity can reduce feelings of stress and anxiety, and 57% say creativity can improve mental well-being.**



NAMI’s Schizophrenia Lexicon Guide is a novel resource designed to inform industry, media, and providers regarding best practices for talking about schizophrenia and related psychosis conditions. The unique value of the guide comes from its inclusion of diverse voices: The content is informed by academic literature, clinical professionals, and the lived experiences of individuals with psychosis conditions and their family members. By combining all different types of “expertise,” the guide provides a more nuanced and complete picture of the impact of language and the justification for its recommendations.



NAMI has continued to raise disease state education and awareness around tardive dyskinesia (TD). This year, 80 NAMI State Organization and Affiliates received grants to either create or expand initiatives to improve TD advocacy and to spread TD awareness, education, and support.





## WE ARE ONE NAMI: INCREASING KNOWLEDGE

Currently 21 NAMI State Organizations and 86 NAMI Affiliates are approved to present NAMI Hearts + Minds, a wellness program designed to educate and empower people to better manage their health, both mentally and physically. **“It’s not just enough to change my meds. I need to be committed to health in all areas of my life.”**

— NAMI Hearts + Minds participant



In 2023, NAMI was represented at the Global Bipolar Cohort research initiative (GBC) and the Human Phenotype Ontology group (HPO). This workshop brought together clinicians and data scientists to initiate the development of a detailed and flexible diagnostic profile for bipolar disorder, with the goal of creating a user-friendly algorithm to aid clinicians in diagnosing the condition. An academic manuscript based on the outcomes of the workshop has been submitted for publication in Nucleic Acids Research.

Additionally, a NAMI representative attended the inaugural Integrated Network Investigator Meeting for the Breakthrough Discoveries for Thriving with Bipolar Disorder research initiative (BD2) in Washington, D.C. This meeting brought together researchers and staff representing the six founding clinical study sites, genomics and data science experts, and lead investigators responsible for designing this historical longitudinal research effort. Along with Depression and Bipolar Support Alliance CEO Michael Pollock, NAMI participated in a panel presentation titled “Centering Lived Experience and Care.”





# WE ARE ONE NAMI:

## 2023 NAMI CORPORATE AND PHILANTHROPIC PARTNERS

Acadia Pharmaceuticals Inc.  
ACCO Brands  
Airbnb  
Alkermes Pharmaceutical  
American Independent Business Coalition  
ASICS  
Astellas  
Axsome Therapeutics  
Bank of America  
Biotechnology Innovation Organization  
Blackbaud Giving Fund  
Bloomberg  
Boehringer Ingelheim  
Brown & Brown, Inc.  
Bubble Skincare  
Businessolver  
Calm  
Carelon Behavioral Health, Inc.  
Cargill, Inc.  
Centene Charitable Foundation  
Centene Corporation  
Cerevel Therapeutics  
Chiesi Rare Disease  
Cisco  
Conscious Step  
ConstructConnect  
Corcept Therapeutics  
Cute But Crazy  
Dancing Tides Foundation  
Delta Air Lines  
Entertainment Industry Foundation  
Execs in the Know  
Experian  
Facebook  
Francis Beidler Foundation  
Geico Philanthropic Foundation  
Genentech

Girl Scouts of America  
Golden Touch Group  
Hartford Financial Services Group, Inc.  
Hartford Foundation for Public Giving  
Hearst Foundation  
High Lantern Group  
Hilltop Foundation  
Hinman Foundation  
HM Dennis Decedent's Trust  
Hostess  
J.M. Smucker Company  
Houlihan Lokey, Inc.  
Humana  
Instagram  
Intra-cellular Therapies  
Jazz Pharmaceuticals  
J Willard and Alice S. Marriott Foundation  
Janssen Pharmaceuticals, Inc.  
Johnson & Johnson Health Care Systems, Inc.  
Kaiser Permanente  
Kappa Kappa Gamma  
Karuna Therapeutics  
Kohl's  
KPMG Foundation  
L'Oreal USA Inc  
Leibowitz and Greenway Family Charitable Foundation  
LivaNova USA, Inc.  
LKQ Corporation  
Lokai  
Lululemon  
Lundbeck, Inc.  
Macy's  
Magellan Federal  
Marin Community Foundation  
Mattress Firm  
May & Stanley Smith Charitable Trust

Mental Health America  
Meta  
McKesson Foundation  
Miraval Resorts & Spas  
Moderna Therapeutics  
Morgan Stanley  
Mylan  
Myriad Genetics  
Neuberger Berman Foundation  
Neumora Therapeutics  
Neurocrine Biosciences, Inc.  
Neuronetics, Inc.  
New York Community Trust  
Northrop Grumman  
Novo Nordisk, Inc.  
NRG Energy  
OLLY  
Otsuka America Pharmaceutical, Inc.  
Pagerduty.org  
Palayam Foundation  
Paylocity  
People's First Charitable Foundation  
Perficient  
Pfizer  
Phreesia  
Plus1  
Public Consulting Group  
Questco Holdings  
RBC Capital Markets, LLC  
RBC Foundation  
Sage Therapeutics  
Salesforce Foundation  
San Francisco Foundation  
Shear Family Foundation  
Sheetz  
Sikand Foundation  
Slide Insurance Holdings, Inc.

Snap Fitness  
Soci  
Sony  
Stanley Center for Psychiatric Research Broad  
institute of MIT and Harvard  
Sumitomo Pharmaceuticals  
Sun Life Financial  
Supernus Pharmaceuticals, Inc.  
Takeda Pharmaceuticals America, Inc.  
Teva Pharmaceuticals  
Thrivent Charitable  
Tides Foundation  
TikTok  
Twitch International  
United Healthcare Corporation  
Univision Foundation  
Vanguard Charitable  
Verscend  
Walt Disney  
WarnerMedia  
WebMD  
Wedbush Securities  
Wells Fargo & Company  
Wisconsin Physicians Service Health Solutions



## NAMI LEADERSHIP ALLIANCE:

### MAJOR DONORS AND FAMILY FOUNDATIONS

We are grateful for the support of all NAMI Leadership Alliance donors, including many who choose to remain anonymous.

1st Place Sports Running Club Inc  
4Wall Entertainment  
AB and OB Fund  
Grace Abbott  
The Abel Family Fund  
Abraham and Beverly Sommer Fdn  
Tommy-Lee Abt  
Academy of Our Lady of Lourdes  
ACI Enterprises, Inc. -  
ACI Specialty Benefits  
Acosta Sales & Marketing  
John and Kathy Adamiak  
Nancy and R. Neil Adams  
Olivia Adelman  
Julia Adeney Thomas  
ADJLM Foundation  
Krishna Agrawal  
Mary Sue Albanese  
Alice and Fred Wall Family Foundation  
Alice Joppa Cebula Revocable Trust  
All Faith Self Help Center, Inc.,  
Christina Allan  
Allied Sports LLC  
Lynda Almuth Antonelli  
Alpha Beta Chi Psi  
Dr. Joseph Altonji and Ms. Cynthia  
Nethercut  
Zach Ambrose and Jill Wright  
Amdur Family Foundation Inc  
American Academy of Pediatrics  
Pam Ames  
The Ames Family Foundation  
Amy Speas  
Tyler Anbinder  
Roland Anders and Audrey Suhr  
J. Anderson

Andrea Lipp Kingsley Fund  
Julia Andress  
Pamela Andrews  
Omua Angole  
David and Carol Angus  
Ann E Onymous Foundation  
Anne Bleecker Corcos Charitable  
Remainder Unitrust  
Anne Sisteron Fine Jewelry  
John and Cathy Anthony  
Anthony and Jeanne Pritzker  
Family Foundation  
The Anthony M. and Lea Scibelli  
Charitable Foundation Trust  
Dineshni Anumala  
Andrea Appin  
James Apple  
Suzanne Arabian  
Arlene Goodstein Memorial  
Giving Account  
Jennifer Armentrout  
Debra Arneson  
Tina and Brian Arnold  
Jarrett and Nora and Jarrett Arp  
Arthur J. Gallagher & Co.  
Steven Ashelin  
Asia Ashford  
ASICS Digital, Inc.  
Russ Atha  
Sara Atwood  
AvalonBay Communities, Inc.  
Lori Avirett-Mackenzie  
David Axelson  
Janet Axelson  
Axelson Family Charitable Fund  
Ayah Fund

Robert and Margaret Anne Ayres  
Jeffrey Baab  
Jackie and Jeff Badders  
Badger State Civic Fund  
Karl and Marcia Baer  
Stephanie Baer  
Kelly Baglioni  
Sara, Lori and James Balow  
The Barbara H. Wilson  
Irrevocable Trust  
Alan Barbee  
H. Chris and Pam Barber  
Robin Barker  
Christol Barnes  
Amy Barnhardt  
Eugene Barr  
Bart and Judy Lipofsky  
Suzanne and James Bartell  
Andy Bartholomew and  
Siena Aguayo  
Jesse Basford  
Sarah Bashford  
Julia Batdorf  
John Bauer  
Matthew Baumgartner  
David Bausch  
Rahul Bawa  
Diane Beal  
Garcelle Beauvais  
Susan Bechter  
Vicki Beck  
Jason Becker  
The Becket Family Foundation  
Judith Beckman  
Sarah Bedford  
Carol Bell

Christine Bell  
Belovsky Foundation  
Julia Bender  
Brandi Benford  
Vicki Benne  
Jeffrey Bennett  
Marsha Bennett  
Thomas Bennett  
Jane Benton  
Brendan Bergin  
Judy and James Bergman  
Micah Bergman  
Bernard and Jennifer Gordon Fund  
Cathy Bernard  
Gene Bernardoni  
Anne Beroza  
Marilyn Best  
Betts Family  
Binghamton Nu Alpha Phi  
Biow Russ Fidelity Giving Fund  
Janet and Richard Birnbaum  
Kyle Bishoff  
Bitly Inc  
Bits In Glass US, Inc.  
Craig Bitterman  
Gary and Lorna Bjorklund  
Norman Blair  
Jocelyn Blaskey  
Mary Beth Bletsas  
Linda Block-Coalter  
Jeanne Bloom  
Patricia Bloomer  
Ronnie Blum  
Lisa Bogner-Danler  
Myrtle Bohanan  
Gregory and Karen Bolduc

Pamela Bollinger  
Bonnie and Mike Gaffney  
Family Foundation  
Bonusly Accounts Payable  
Alexander Booher  
The Borcherding Heck  
Charitable Fund  
Beth Boschee  
Jan Bottcher  
Michael Bouma  
Scott Boutin  
Robert Bowden  
Sharon Bowyer  
Frederick Boyd  
Jeanne Boykin  
Margaret Braband  
Betsy Brach  
Nita Bradford  
Alan Bradley  
Karen Bradley  
Scott Bradley  
Mary Brady and Robert Cummings  
Matthew and Amy Brady  
Lisa Brainard-Bitzel  
Heidi and Steve Lee Brandemuehl  
Susan Braunwald  
Cade Brazier  
Thomas Breakell  
Brehm Family Charitable Fund  
Valjean Breinke  
Peggy Bremer  
James Brennan  
Mary and Mats Brenner  
Nancy Brent  
Julie Breskin  
Peg and John Breslin

Valerie and Robert Brewster  
Angela Brown  
Ann Brown  
Claire and Hubert Brown  
Deborah Brown  
Janice Brown and David Goldsmith  
Karen and William Brown  
Lynn Brown  
Brown Brothers Harriman & Co.  
Janice and Allen Browne  
Janet and William Brownstein  
Elijah Bruette  
Jonathan Brumer  
Gregory and Robyn Bruns  
Hoke Brunson  
Michael Brunsvold  
James Buck  
Frederick and Jane Buckner  
James Budke  
Kathryn Bullock  
Solange Bullukian  
Paul Bunge  
Bonnie Buratti and Reuben and  
Kai Lam  
Kathleen Burek-Huntington and  
Henry Huntington  
Renee and Courtney Burke  
Tobias Burke  
Rebecca Burnau  
Kimberly Burns  
Michael Burstein  
C. Burton  
Chris Burton  
Caroline Bush  
Rafael Bustos  
Jerry Buysse



Calder Family Fund  
Delois Caldwell  
June Calhoun  
Kathleen Calhoun  
Rachel Callison  
Jason Camillos  
Barbara Campbell  
Keli and Timothy Campbell  
Patty Campbell  
The Campbell Family Fund  
Campbell Snowflakes  
Thomas and Irene Caniano  
Capital One  
Teresa Cardona  
Jared Carlson  
Jeanne Carlson  
Olivia Carmichael  
The Carol J. Adragna  
Family Foundation  
Abby Carpenter  
Douglas Carr  
Sue Carter  
Thomas Carter  
CAS Charities Fund  
Kristin Casado  
Arthur Cashin  
Mary L. Cassidy  
Joan Cassman  
John E. Cavanaugh  
CBRE  
Cecala Family Charitable Fund  
Gary Cederquist  
Marc Chadwick  
John Chalmers  
Kathy Chameli  
Anne Chang  
Joseph Chang and Juliet Siegel  
Pamela Chapman  
Chapman and Cutler LLP  
Charles and Anne Murphy  
Memorial Fund  
Charles and Anne Pedrazzini Private

Charitable Foundation  
Charles and Frances Kempler  
Foundation  
Charles E. & Dorothy K. Brown  
Foundation  
Hillary Chen  
Vanessa Chen  
Rick Cheng  
Stephanie Cheung  
James Chew  
Chicago Trading Company  
Beverley Childress  
Julie Chin  
Chorzempa Family Foundation  
The Chris and Melody Malachowsky  
Family Foundation  
Christ Church Thrift Shop  
Marie Christensen  
Susan Christiansen  
The Christina M. Burgan-Ahlers Trust  
Brian Christy  
Nancy Church  
Rosemarie Ciccarello  
Tim Cinalli  
City of Mason  
Emmitt Clark  
Katherine and James Clark  
Luwanna Clark  
Theresa Clarke  
Cathleen Cleary  
Jim Clelland  
CNA Insurance Companies  
Foundation  
Leo Coffey  
Cogentrix Energy, LLC  
Jacqueline Cogswell  
Allan Cohen  
Andrea Cohen  
Lauren Cohen  
Eduardo Colón  
Comcast Corporation  
Companion Pet Partners, LLC

Conner Family Fund  
Katherine Connors  
The Constance M. Hoguet and  
Richard Neel Charitable Fund  
Cook Family Foundation  
Charlotte Cooksey  
David Cooley  
Cooper-Siegel Family Foundation  
Cora M. Shanahan Trust  
The Corbin Giving Fund  
Molly Cornell  
Costigan Family Charitable Fund  
James Costos  
Paul Cox  
Allison Coyle  
Barbara Coyne  
Rebecca Craig  
Maggie and Paul Crane  
Riley Cregan  
Nancy Crispen  
Suzanne and John Croteau  
Crouch Family Foundation  
David, Philip and Lisa Crow  
Balazs Csaki  
Cudd Foundation  
Hugh Cullen  
Carol Cumming  
J. Stuart Cumming, MD  
Customink LLC  
Charles Cycon  
The Cynthia and George Mitchell  
Foundation  
Margaret Cytryn  
D.E. Hodun Fund  
Nicolys and Vincent D'Agostino  
Margaret D'Albert  
Anita Dale  
Dale-Harverd Family Account  
Veronica Daly  
Dancing Tides Foundation, Inc.  
Ralph Dandrea  
Daniel and Diana Attias Fund

Daniel J. and Edith A. Ehrlich Family  
Foundation  
William and Susanne Daniell  
Daniell Family Legacy Trust  
John Daugherty  
Dauten Family Foundation  
Dave and Gina Gratitude Fund  
David Arends Revocable Trust  
David S. and Elizabeth B. Arnott  
Family Fund  
David S. Stone Foundation  
Jessica Davidson  
Lila Davidson  
Davidson Trucking, Inc.  
Gary Davis  
Mr. and Mrs. Clyde Dawson  
Robert Dayton  
Nancy De Fren  
Richard Deamer  
DebbieHenrikCharity  
Debra Lynn Foundation  
Mary Debroux  
Gena DeChant  
Anne Decker  
Decus Biomedical Inc.  
Marilyn DeGrasse  
Teri DeLano  
Christina Dell  
Delta Dental of Arkansas  
Delta-Sonic Carwash Systems Inc  
Victoria Delveaux Hughes  
Dominic DeMaria  
Demery Family Foundation  
Andrew and Diana Dempsey  
Dena Wirt Declaration of Trust  
Mary Deneweth  
Dot Denniston  
Jennifer Derse  
Rocky DeStefano  
Melinda Deuster  
Cheryl DeVaal  
Mark Dexter and Deborah Cowley

Elizabeth D'Hemery  
Diane and John Dormanen  
Foundation  
Diane Arber Hirsch Charitable Trust  
Dianne M Peterson Giving Fund  
Dianne Snedaker Charitable Fund  
Jeff Dickhart  
Glenice and Kenneth Dickson  
William and J. Sharon Dickson  
Robert Diefenbacher and  
Pamela Bisson  
Rosemary DiGiandomenico  
Tim Dilley  
Mr. and Mrs. Timothy Z. Dilley  
Ruth Dinowitz  
Jacquelyn Dinvaut  
Dorothy Disney  
Linda Ditter and Don Grayson  
Abha Divine  
Lisa Dixon and Andrew Farb  
Marcy and Barry Dobil  
Allegra Dobson  
Beth Dobson  
The Dolan Family Foundation  
Ryan Dombrowski  
Jonathan Donahue  
The Donald G. and Ellen Goodwin  
Family Foundation Inc.  
Donnalee C. Rhodes Trust  
Sharon Donohoe  
Patrick Donohue  
Jerome Doornek  
Hannah Dorner  
Mason Dorner  
Terry, Becky and Rachel Dorner  
The DOT Printer, Inc.  
Martin Doublesin  
Kathleen Doughty  
Michael Downie  
Downingtown Area School District  
Andrew Doyle  
Michael Drake

Scott and Frances  
Drone-Silvers  
Shelley DuBois  
Gale DuBrow  
Glenn Ducat and Beverly  
Krivokapich  
Christopher Duffin  
Diana Dundore  
Dune Jewelry Inc.  
James Dunk  
Nancy Dyar  
Mary Dyer  
Elisabeth Dykens  
Michele and Steven Dyson  
E&B Family Trust  
E.I. DuPont de Nemours and  
Company  
The Earl and Shirley Greif  
Foundation Trust  
Earp Family Fund  
Nancy Ebb and Gary Ford  
Thomas Edelblute  
Eric and Susanne Edelson  
Rebecca and Sam Eden  
Douglas Edgren  
Edward and Joan Anders Fund  
Jessica Edwards  
Eickmeyer & Associates, Inc.  
Shai Eisenman  
EJS Trust  
Ian Eldred  
Danielle Eliav  
Elinor Beidler Siklossy Foundation  
Elizabeth Elser Doolittle  
Charitable Trust  
Elizabeth Wright Charitable  
Giving Fund  
The Elle and Gogs Fund  
Bill Ellenbogen  
Charles and Margaret Elmer  
Tom and Jeanne Elmhurst  
Janet Elson



EmpiRx Health  
 EMPRESS Interest Group  
 The EMSS Foundation Inc  
 Endaoment  
 Linda Engberg  
 Diana and Richard England  
 Teri Engler  
 Ellen English  
 Nina and Mark Engstrom  
 Enterprise Holdings Foundation  
 Eric S. and Kelly S. Dreyer  
 Charitable Giving  
 Bob and Kathy Erkel  
 Anne Esker  
 Essinfeld Family Charitable Fund  
 Gene Esswein  
 Estate of Alice G. Quinn  
 Estate of Annetta M Bean  
 The Estate of Beryl W. Cole  
 Estate of Dorothea S. Childester  
 The Estate of Douglas Wright  
 Estate of Geraldine R. Brinker  
 Estate of Joanne T. Kelly  
 Estate of Mark F. Hennig  
 Estate of Melanie A. Martindale  
 Estate of Robert C. Christopher  
 Estate of Sheryl Kleinhaut  
 Etsy Impact Fund  
 Ettinger Family Charitable Fund  
 Eugene N Koselke Living Trust  
 The Fadem Family Foundation, Inc.  
 Ellen Fahey  
 Thomas Fahey  
 Victora Fahey  
 Fangamer LLC  
 Alexa and Nauder Faraday  
 Nora Farber  
 Ellen Farbstein  
 Kathryn Farinholt and Michael Ward  
 Carl and Judy Farley  
 Peter Farrell  
 Featherstone Giving Fund

Louise Feinberg  
 Henry Feldman  
 William and Peggy Feller  
 James and Tammy Felt  
 Mary Felte  
 Jones Felvey  
 Andrea Fender  
 George Fenster and Paula Brust  
 Mark and Susan Fern  
 Sergio Fernandes  
 M. Elaine Ferrara  
 David Fessler  
 Alice Fichandler  
 Elizabeth and Michael Fieweger  
 The Finkelstein Foundation  
 Laurene Finley  
 Laura Finn  
 The Firefly Trust  
 Dawn Fisher  
 Jennifer Fisher  
 Janice Fiske  
 Erin Fitzgerald  
 FitzGibbon Charitable Fund  
 Ellen and Richard Flaherty  
 Mindy Flanigan  
 Dorothy Flattery  
 Carola Fleener  
 Anne Flosi  
 Barbara and Raymond Flunker  
 Margaret Flynn  
 FlynnBoyle Family Fund  
 Allen Fogel  
 Norman and Adrienne Fogle  
 Robert and Amy Folberg  
 David Foley  
 Hope Foley  
 Mike Foley  
 Michael and Karen Folk  
 John Folts  
 John Fontaine  
 Debbie Forbeck  
 Forster Foundation, inc

Eva Maria Fossas Blanco  
 Mary Foutz  
 Leslie Fox  
 Per Fragemann  
 Eric Francis  
 Jonathan and Joli Francis  
 Francis Beidler Foundation  
 Francis Law, PC  
 Luisa Francoeur  
 Jon Frank  
 Frank Dunau and Amy Davis  
 Charitable Fund  
 Frank Strivk Foundation INC  
 Neshama Franklin  
 Fraternal Order of Eagles Aerie #882  
 Bingo Fund  
 Fraternal Order of Eagles ALVA Aerie  
 871 Electronic Gaming  
 Fred and Maxi Bruhns Foundation  
 Stephen and Barbara Fredman  
 Janine Freeman  
 Lucile Freeman  
 John and Gioia Frelinghuysen  
 Dan Frey  
 Jeff Friant  
 Morris Friedell  
 David Friedman  
 Elizabeth and Glen Friedman  
 Hallie, Lody, Gabriel and Stew  
 Friedman  
 Roxane Friedman  
 David Friend  
 Lawrence and Joan Friend  
 John Froelich  
 Joan Fromewick  
 Patricia Fuller  
 Karen and Richard Furst  
 G. B. & M. May Foundation  
 G. J. Brown Charitable Trust  
 Theresa Gallagher  
 Gallery 1925  
 Apoor Gami

Antonio Garcia  
 Catherine Gardner  
 Joe Gargiulo  
 Michael Garrahan  
 Jennifer Garris  
 Lynn Garson  
 Joseph Gaskill and Connie Burgoyne  
 Gaskill  
 Susan and Joseph Gatto  
 Gaur Giving Fund  
 Ellerey Gave  
 Joanne Gay  
 Lise Gelernter and James Gardner  
 Judy Gentile  
 Kathryn Gerber  
 Gertz-Pellicane Family Fund  
 Nancy Gewirz  
 GGE Foundation, Inc  
 Julia Ghorbi  
 Robert Giannasi  
 Giarla, Michelson & Carr  
 Charitable Foundation  
 James Gibbs  
 Dana Gibson  
 Gibson Family Fund  
 Gift4Giving Program  
 Ken Giglio  
 Casey Gilbert  
 The Gina Kamentsky Fund  
 Luce Giroux  
 Givslly  
 Frank Gjata  
 Maureen Gleason  
 Arthur Gleckler and Kristine Kelly  
 Frederick Gloeckler  
 Michael Gloudemans  
 Ryan Gnieski  
 Jason Goerges  
 Kathleen Goldammer-Copeland and  
 Mark Copeland  
 Joseph Goldberg  
 Dorian Goldman and Marvin Israelow

Judith Goldman  
 Sara Goldstein-Stoll  
 Magda Gomez  
 Melody Gongwer  
 Greg Gonzalez  
 Gonzalez Family Giving Fund  
 Phyllis Goranson  
 Jeffrey and Sara Gordon  
 Lisa Gores  
 GoTo  
 Jennifer Gover  
 Stacy and Mark Grabar  
 Marilyn and Rene Grace  
 Fillan Grady  
 Patsy Graham  
 Grandison Foundation  
 The Granite Group  
 Craig Grant  
 Madeleine Grant  
 Linda Graves  
 Allison Gray  
 Marcus Gray  
 Gray Family Charitable Fund  
 The Gray Insurance Co.  
 John Green  
 Joseph Greenberg  
 The Greenberg Foundation  
 Elaine Greene  
 Joel Greenspan  
 William Greer  
 Heather Gregg  
 Cory Gregory  
 Maria Greig-Williams  
 The Gren Group  
 Joseph Greskoviak  
 Greystone and Company  
 Wendy Grieser  
 Bernadine Grieshop  
 Richard and Ruth Griffin  
 Emily Gritters  
 Groom Law Group  
 Naomi Gross

Steve Gross  
 Douglas and Janet Grove  
 Mark Grovhoug  
 Jazmine Guaydacan  
 Fernando Guerrero  
 Vedant Gupta  
 Ellen Gurley  
 William and Donna Hacker  
 Daniel Hadley  
 Thomas Hafner  
 Ian and Belinda Haggard  
 Ian Haggard  
 Laura Halford  
 Monica Haltmeyer  
 Margaret Hamer  
 Richard and Lorie Hamermesh  
 Tom and Carolyn Hamilton  
 David and Janice Hanbury  
 Tyler Hand  
 William Handley  
 Anthony Handzlik  
 Michael Haney  
 The Hankin Family Charitable  
 Foundation  
 Patrick Hanley  
 Hannon Art Ink LLC  
 Barbara Hanrahan  
 Robert Hansel  
 Emily Hansen  
 Marci Hanson  
 Karen Harant  
 David Hardie  
 Phil Harmon  
 The Harold R. Goldmann  
 Charitable Trust  
 Charles Harrell  
 Sheila Harrington  
 Judith Harris and Norman Ornstein  
 Nyssa Harris  
 Ruth Harris  
 Samala Harris  
 William Harris



Kelly Hartman  
Harvard Consulting on Business and  
the Environment  
Abul and Q Hasan  
Gareth Hattersley  
Paul and Cheryl Haupt  
Hausman Berlin Fund  
James Hayes and Catherine Keig  
Anitta Haywood  
Elizabeth Hazard  
Lonnie and Andrea Hazlitt  
HealthEdge  
Hediger/McLernon Giving Fund  
Jerry Heftler  
David Hegarty  
Greg Heinzinger and Kerstin Pfann  
Heinzinger/Pfann Family Foundation  
Benjamin Helfman  
George Hellyer  
Helpful Resources for Seniors  
Jeffrey Hendel  
Calvin and Elaine Henderson  
Patricia Henderson  
John Henning  
The Henry Foundation  
Henry L. Kimelman Family  
Foundation  
April Herbert  
The Herbert and Doris Seubert  
Charitable Fund  
Julio and Joan Herdocia  
Hermann Family Fund  
Taylor Herrick  
Erik Herzog  
Rachel Herzog  
Dan Hiemstra  
Melissa, Annette and William Hill  
Sarah Hillard  
Hilltop Foundation  
Hines Corporation  
The Hinman Foundation  
Robert Hirsch

Hiscutt and Associates, Inc.  
Chelsa Hise  
HKA Global  
Myra Hochman  
Sarah Hodgson  
Hoehl Family Foundation  
Hoffman & Hoffman, Inc.  
Richard and Judith Hoffman  
Richard Hoffman  
Mr. and Mrs. William Hoffman  
Carol Hoffman Matzke  
Madison Hofreiter  
Brian and Janice Hogan  
Sarah Holden  
Conrad and Jeanne Holling  
Shirley Holloway  
Home Base Media LLC  
Mary and Roger Honbarrier  
Mari Hooten Lee and Randy Lee  
Horace Mann  
Bob Horan and Deborah Wright  
Arlene Horowitz  
Lola Horwitz  
David Hoselton  
Gary and Marion Hosey  
Houff Charitable Foundation  
Houghton Family Fund  
Sean Houseworth  
Mary Hovingh  
Albert Howard  
Donald and Marita Howard  
James Howe  
Maureen and Mark Hoyer  
Robert Hoyler  
Robert Hudson  
Tad Huffard  
Susan and Lee Hughes  
Steve Huizenga  
John and Suzanne Humphrey  
Karen and Wendell Hunsucker  
Marion Hunt  
Ashraful Huq and Samia Sabeen

Linda Husar  
Brian Hutchings  
HX5 LLC  
Kimi Iguchi  
Imagine360  
Margaret Ina  
Indivior  
Ingram Foundation  
Interpublic Group  
Lori Ireland  
Charles Irvin  
Anne Iverson  
Edward Ives  
Ivy Family Fund  
J. Jellybean  
Jace Cohen Giving Fund  
Jack B. Homer Giving Fund  
Florence Jackson  
Sam Jackson  
Marion Jacobs  
Vinit Jagdish  
Joe and Susan Jahraus  
Priya Jain  
Kay James  
The James Feit Charitable Fund  
James H. and Anne N. Harnden Trust  
The James M. and Louise C. Roche  
Foundation  
Jamey and Julie Power Charitable  
Giving Fund  
Jane and Payson Swaffield  
Charitable  
Tanveer Janjua  
Paul Jannakos  
E. Janopaul-Naylor  
Jefferson Rubber Works  
Jeffrey and Jennifer Koenig  
Martha Jeffreys  
The Jelks Family Foundation Inc  
Juliette, George and Brahn Jenkins  
Jennifer Warlick  
T. G. Jensen

Jeri and Joel Finard Charitable Fund  
The Jesse H. Oppenheimer & Susan  
Oppenheimer Foundation  
Jim and Monica Rutherford  
Charitable Account  
JKM Family Charitable Fund  
The JN Trust  
Joe Lee Griffin Foundation  
Luther Johansen  
John & Rose Herman Support  
Foundation  
John B. and Florence J. Morello Fund  
John B. Blough and Bonnie J. Blough  
Charitable Remainder Trust  
The John B. Robinson, Jr. M.D. Fund  
The John F. Maher Family  
Foundation  
John Green Alison Zaeder Fund  
The John H and Catherine V Hahn  
Charitable Foundation  
John H. and Amy Bowles Lawrence  
Foundation  
John R. Barnaby Charitable Fund  
Johnson & Johnson Foundation  
Bob Johnson  
James and Susan Johnson  
Jennifer Johnson  
Marilyn Johnson  
Johnson Crut  
Johnson Giving Fund  
Andrew Johnstone  
Ian Jomha  
Jonathan and Ashley Reckford  
Kirk and Deborah Jones  
Jones Walker L.L.P.  
Joseph & Susan Gatto Foundation  
Joseph H. Goldberg Family  
Foundation  
Joseph K. and Inez Eichenbaum  
Foundation  
The Josh Dillon and Effie Seiberg  
Fund

JP Morgan Chase Foundation  
Thomas Judd  
Mary Judge  
Judith Keltner Trust  
Michelle Judson and  
George Hembree  
The June and Frank Heintz  
Charitable Fund  
The JV Schiro-Zavela Foundation  
The KAG Trust  
The Kain Family Giving Fund  
David Kalinski  
Amber Kamacho  
Mark Kammerer  
Tyler Kanczuzewski  
James Kandell  
Michael Kane and Dorothea Mast  
Lawrence Kao  
Karen and John McGuinn  
Family Fund  
Karin Akre  
Joan Kasner  
Jessica Kasten  
Kathryn Skibisky Norton Estate  
Robert Katzfey  
Gabriel Kaul  
Fuat Kavak  
Kay Boemer Charitable Fund  
KDJ Consulting  
Chad Keegan  
The Keehn Family Foundation  
Arleene Keller  
Adrienne Kelly  
David Kelly  
Dawn Kelly  
Kelly Foundation  
Judith Keltner  
Frances Kempler  
Kenneth Kendler and  
Susan Miller Fund  
Francis Kenny  
Leslie Kenyon

Paul Kepple  
Peter Kerman  
Harriet E. Kern  
Szitkar Kerr  
Steven and Marta Ketchel  
Kid Fund  
James Kieffer  
Donald, Joan and Joan Kimmel  
Gail and Kenneth Kinard  
Jon King  
Mike King  
Roger King  
King Foundation  
Donna Kinley  
Robert Kinney  
The Kinney Family Foundation  
Matt and Shirley Kirby  
Colin Kirkman and Tony Carollo  
Daniel Kirkpatrick  
Paul and Nita Kirkpatrick  
Waldemar Kissel  
Barbara Kissinger  
Debbie Kissinger and Frank Echols  
Rachael Klein  
Rebecca Klein  
Brad Kliewer  
Sally Klimchock  
Mary Knabe  
Wolf Knapp  
Robert Knetl and Gail Baker  
Kobak Family Philanthropic Fund  
James Kobs  
Deborah and Phillip Koeffler  
George and Jutta Kohn  
Konkle Family Charitable Fund  
Kenny Kotalik  
Christopher Kovach  
Spencer Kozinn  
Ellen Krantz  
Jason Krause  
Kravet Inc  
Bob Krick



Kristin L. Anderson Charitable Foundation  
 Barbara Krummel and R. Higuchi  
 David and Nancy Krunnusz  
 Kruse Family Fund  
 John and Bonnie Krystal  
 Steven Kuhn  
 Denise Kulick  
 Gregory Kunert  
 Carolyn Kwalick  
 Herbert and Lai Kwok  
 Laing Family Charitable Fund  
 Rozina Lakhani  
 Katy LaLone  
 Catherine LaManna  
 George Lambert  
 Mary LaMothe  
 Janice Lancaster  
 John Lane  
 Kathaleen and Kenneth Lang  
 Shirley Lanners  
 Anne Larin  
 Calvin Larsen  
 Joseph LaSala  
 Nancy Lasik  
 Stephen Latter  
 Eugene and Shirley Lauer  
 Amy Laughlin  
 Law Office of Michael R. Braun  
 Martha Lawlor  
 Quinn Le  
 Linda Leach  
 Gail Melody Leak Kavota  
 Linda Leander  
 Marcia LeBeau  
 Michael Lebow  
 Lebowitz Giving Fund  
 Hannah Leckman  
 Austin Ledbetter  
 Abbott and Pamela Lee  
 Roland Lee  
 Soo-Mi Lee

Donna Leftwich  
 Anthony Leggett  
 Thomas Lehrer  
 The Leibowitz and Greenway Family Foundation  
 Leila Christine Grad, MD Charitable Fund  
 Joe LeMaster  
 Judit Lendvay  
 LePage Giving Fund  
 Daniel Lessin  
 P Lester  
 Ruth Lester  
 Lester Poretsky Family Foundation, Inc  
 Letterman Digital  
 Letzler Family Fund  
 Wai-Man Leung  
 The Levin Gruber Fund  
 Howard Levy  
 Karen Levy  
 Nathaniel Levy  
 Lillian and Bob Anderson Giving Fund  
 Nicholas Limpach  
 Karen M Lind  
 Jane Lindsay  
 Peggy and Bill Lindsey  
 Melissa Linehan  
 Bill and Micki Lippe  
 Jennifer Liptow  
 Joseph List  
 Robert Lister  
 Litman Weinberg Charitable Fund  
 Nancy Litterer  
 Teresa and Charles Little  
 Dona Livaudais  
 Selina Lo  
 Kia Locksley  
 Janet Lockwood  
 David Lococo  
 Loftus Family Foundation

Logistick  
 Lois and Richard England Family Foundation  
 Bradford Long  
 Loop & Tie  
 Kimberly Lopez  
 Betsy Lord  
 Anahita and James Lovelace  
 Robin Lucero  
 Lucille Ellis Simon Foundation  
 Fred Luebke  
 Joy Luecke  
 Lowell Luhman  
 Richard Luhr  
 The Lumabel Charitable Fund  
 The Lundrigran Walker Family Foundation  
 Jessica Lupanow  
 Samuel Lupfer  
 Frances and Mark Lyle  
 Lyle Charitable Charitable Fund  
 Laura Lynam  
 Steven Lyons  
 Patricia Macholl  
 Bruce MacLeish  
 Scott MacLeod  
 Marjory A. MacQuarrie  
 Madeline and Bruce Ramer Charitable Fund  
 Magellan Federal  
 Magic Charitable Foundation  
 Anne Magowan  
 Main Title Entertainment  
 Shane Malaspina  
 Malek's Pizza Palace, Inc  
 Elizabeth Malone  
 Stephanie Mango  
 The Manny and Ruthy Cohen Foundation  
 The Manny Fogel Foundation  
 Jeffrey Marcus and Susan Nitkin  
 Marcus Nitkin Giving Fund

Margaret O. Joy Designated Fund  
 Carol Margrif  
 Marilea Larm Trust  
 Mark C Engasser MD PA  
 The Mark Heiman Family Foundation  
 Janice Maroot  
 Jeff Marquez  
 Marsh & McLennan Agency LLC  
 Marcia Marshall  
 Mark Marsters  
 Daniel Marston  
 Joyce Marter  
 Martin Bros. Marcowall, Inc.  
 Barbara and Edward Martinez  
 Rick Marx  
 Mary Cooney and Edward Essl Foundation, Inc.  
 Lisa Maska  
 Josiah Mason  
 Maggie Mason  
 Olivia Massey  
 Mathematica Policy Research, Inc.  
 Lynn Matheny  
 Maverick Tattoo Mercantile  
 Christine and Fred Maxfield  
 Dr. Thomas and Musa Mayer  
 Mindy Mayhue  
 Mays Family Foundation  
 Danny Mazzola  
 Mary McAllister Bold  
 Brian McAndrews  
 Bonnie McCabe  
 Debra McCalla  
 Mary McCallum  
 John McCann  
 Deena McClain  
 William McClung  
 Richard McClure  
 Christopher McCormack  
 Mark McCormack  
 David McCormick  
 Emily and Fred McCoy

Jana McCoy  
 Jeanne McDonagh  
 McDonald Family Fund  
 Valli and Tom McDougle  
 Robin McEvoy  
 Jack McFarland  
 McFarland Johnson Inc  
 Doug McGillivray  
 Elizabeth McGinnis  
 Cullen McGowan  
 Kathleen McGrath  
 William and Marcia McInerney  
 Heather McKay  
 Michael and Cynthia McKee  
 Rebecca McKee  
 McKinney Ventures LLC  
 Mike McKnight  
 Gina McLean  
 Sarah and Michael McNamara  
 The McPeak Giving Tree  
 Kathy McQuiggan  
 Adrienne McReynolds  
 James, Kelly and Mary McShane  
 Molly McShane and George Schaefer  
 McSwane Family Charitable Foundation  
 Natasha McVeigh  
 Amy Meadowcroft  
 Megan Meadows  
 Terrence Meck  
 Isabella and Jean Medina  
 John and Anna Meek  
 Jacqueline and Denis Mee-Lee  
 Michael Melnick  
 Melora Fern's Giving Fund  
 Mental Health Services Fund  
 Rodney Merchant  
 Jeff Merkle  
 Barbara Merle-Smith  
 Mervyn and Marcia Jeffries Charitable Fund  
 Marissa Messer

MetLife  
 Marjorie Meyer  
 Micah Foundation Inc  
 Michael and Karen Folk Family Gift Fund  
 The Michael and Maryann Camardo Foundation  
 Michael Hjerpe Giving Fund  
 Brian Michelson  
 Susan Michelson  
 Mikes Beer Bar LLC  
 Mildred A Beik Estate  
 Kathleen Miller  
 Kristie Miller  
 Michelle Miller  
 Miller-Furst Family Trust  
 The Milly and Horace Dawson Charitable Fund  
 Milne Family Charitable Gift Fund  
 Maida Milone  
 MindPoint Group LLC  
 Kathi Mintzer and Jen Lipschitz  
 Mintzer and Lipschitz Family Charitable Fund  
 Merridy Mishkin  
 Miss Mary's Adult Care  
 The Mistler Charitable Trust  
 Bonnie Mitchek  
 Kim Mitchell  
 Jim Mode  
 Modsock Shop, LLC  
 Karen Monborne  
 Bryan Mone  
 Jayna Montalvo  
 Kendall Montgomery  
 Lisa Moon  
 Teresa Moore  
 Moore Family Fund  
 Martha Moreira  
 Melinda Morey  
 Bill and Barbara Morkill  
 Maria Morrison



Ruth Mort  
Morton Williams Supermarkets  
William Mosakowski  
Donna Moschetti  
Nick and Kara Moseley  
Moseley Family Giving Fund  
David Mossman  
MS Consultants Inc  
Thomas Mueller  
Carol and Malcolm Muir  
Jamshed and Ann Mulla  
Mulroy Family Giving Fund  
Jean Mulvey  
Frank Mumford  
Heidi Munro  
James and Mary Lou Murphy  
Molly Murphy  
David L. Muse  
John Muselmann  
My Favorite Murder. Inc  
Sally Myer  
NAMI Sauk Area  
Sandhya Nandigum  
Nathan Family Supporting  
Foundation  
National Alliance of Healthcare  
Purchaser Coalitions  
National Vision Inc  
Alice Nayak  
Sean Neal  
Benjamin Neale  
Ned and Sheila Himmel Giving Fund  
Laura Nedeau-Owen  
Ivy Nehamkin  
Laura Neil  
Jean Nelson Norman  
Janice Newell  
Christine Newfrock  
Jeffrey Newhouse  
John Newsom  
Diep Nguyen  
Michelle and Jason Nichols

Earl and Victoria Nied  
Nielsen Family Charitable Fund  
Kimberlee Nilsen  
Connie Nine  
Marie Nix  
Noah Langholz Remembrance Fund  
Noah Project Fund  
Jenny Nolen  
The Noom Foundation  
Linda and John Nordin  
Ann and Stephen Norman  
Mary Norsell  
Northern Ops  
Northville Public Schools  
NOSOLO  
Dennis Notter  
Frank and Marion Novak  
Kim Novak Malloy  
Toni Noyola  
Addie Null  
Karen Nusbaum  
James Oakum  
Lance Oberlin  
Carolyn O'Connor  
Kelly O'Donnell  
Margaret O'Donnell  
Pamela and Frederick Oehme  
James and Teresa Ogle  
John Oglesby  
Anne, Daniel and Ruth O'Keefe  
Frances and Gerard O'Keefe  
Old Westbury Golf & Country Club  
Foundation  
Jeffrey Olgin  
Martha Olive  
Rozanne Oliver  
The Olson Family Foundation  
Sarah Oltmann  
Janet O'Malley  
Brian O'Mara  
Onehope Foundation  
Marie O'Neil

onsemi  
The Oppenheim Fund  
The O'Reilly Family Fund  
Mary Orfield  
Michele Orsag and Don Van  
Nieuwenhuise  
Vicky and William Ortega  
Pamela Osborn  
John O'Shea  
Jeffrey Osmint  
Outsource Consultants  
Marnie Overman  
Amy Pacheco  
Lisa Page  
Melissa Page  
Melange Paints  
Prakash Palimar  
Evelyn Pallas and Barbara Winters  
Richard Palmer  
Charlotte Panattoni  
Caitlin Pansegrouw  
Daniel and Linda Park  
Kami Park  
Nancy Parker  
Chris Parrington  
Kimber Parry  
Parry/Frey Family Fund  
Nicolas Partipilo  
Passman for People Foundation  
Beverly Passon  
Marli and Arthur Pasternak  
Pastor Family Charitable Gift Fund  
Nanci Patchen  
PatientPoint  
Patricia K. Bagley 2007 Trust  
Patterson Family Fund  
Paul and Beth Duquette Charitable  
Fund  
Paul and Judy Ulland Family Fund  
Paul E. Clouser and Anne C. Clouser  
Foundation  
The Paul F. and Mary Anne

McLaughlin Family Foundation  
Paul T. Vesely and Vincent C. Dilauro  
Foundation  
Christine Paulson  
James Paulson  
Justin Pava  
Ethelyn Payne  
Lenore Pearlman  
Irene Pecuszek  
Michele Kurucz Peel  
Lauren Pera  
Jim and Susie Perakis  
Sophie, Igor and Nathan Perisic  
The Perisic Family Fund  
Robert Permut  
Megan Perron  
Amy Perry  
Celeste, Douglas and Eric Petersen  
Michele Petersen  
Karen Peterson  
The Petrie Family Foundation  
Andrew Pfau  
Philadelphia Sports Collectors Show  
LLC  
Philip M. Friedmann Family  
Charitable Trust  
Edyth Phillips  
The Phyllis M. Coors Foundation  
Pi Lambda Phi Omega Alpha  
Doris Piatak  
Alex Picarillo  
Pick Charitable Account  
John Pickering  
Kay Pieringer  
Larry, Nancy and Nancy Piotrowski  
Plainville United Methodist Church  
Plaskota Family Fund  
Matt and Justine Plocher  
Plumbers & Steamfitters Local 131  
Polly A. Levee Charitable Trust  
Mr. and Mrs. Jeffrey Pomerantz  
Loren and Rebecca Pool

James Poole  
Robin Poppe  
Louisa Porter  
Jeff Postle  
Charles and Karen Potok  
William and Mary Jo Potter  
Wendi Powell  
Powell Russell Family Fund  
Jerold and Karen Powers  
James Pratt  
Jenna Pratt  
Jill Preyer  
Gerald Price  
Susan Price  
Tanner Prock  
Marnie Prosser  
Francine Protogere  
Alex Protopapas  
Prucich Foundation  
Aimee Prudhomme  
Dina Pully  
Purvis Family Charitable Fund  
William Putnam  
Mary Sue and Daniel Putzulu  
Rui Qian  
Anna Quady  
Jerry Quicker  
Michelle Quillin  
Ursula Quin  
Michael Raabe  
Rabaut Family Foundation  
Eduardo Rabel  
Patricia Raber  
Race Roster  
Isadora Raff  
Joe and Joyce Raine  
The Raine Group  
Ramsay/Burrough Family Fund  
Andrea Rankin  
Karen Ransohoff  
Frances Rassin  
Sara, Harold and H.L. Ravenscraft

The Ravi Chopra Foundation  
Rebecca Rawls  
The Raynie Foundation  
Rayudu Charitable Gift Fund  
RBC Wealth Management  
Siobhan Reardon  
Cynthia Rector  
Red Bird Fitness  
Red Dog Media  
The Redante Family Foundation  
Marie and Steven Reed  
Reed Family Giving  
Lisa Regalado  
Mary Ann Rehnke  
Susan Reimer  
Sarah Reines  
Ann Reinhard and Fred Kelsven  
Darryl Reinhold  
Barbara Resnek  
Kitty Resor  
Reuben H. and Beulah S. Saideman  
Fund  
Carrie Rhodes  
RHS Foundation  
Marilyn and Joe Ricci  
Allen Rice  
Joshua Rice  
Karla Rice  
Dennis Richardson  
Richmond County Psychological  
Association  
Donald Rick  
John Rigney  
John and Sue Ritchie  
River of Grass UU Congregation  
George Roach  
Robert and Cathy Dern Donor  
Advised Fund  
Robert and Susan Rosenbaum  
Foundation  
Robert E Gallagher Charitable Trust  
Mike Roberts



Theresa Roberts and James Yee  
Cindy Robinson  
Wanda Sue Robinson  
Elizabeth Roche  
Larry Roduner  
Mark Roe  
Nancy Rogers  
Rebecca Rogers  
Keith and Connie Rohman  
Marta Rojas  
Josh Romano  
Janusz Romanowski  
Christopher Root  
The Rorer Foundation Inc  
Sheldon Rosen and Karen Hill  
David and Dory Rosenberg  
Jane Ross and Jane Shetler Ross  
Steven and Mary Roth  
Rothman Charitable Giving  
The Rothschild Family Charitable  
Foundation  
Keith and Shelly Rothwell  
John Rough  
Rousseau Family  
The Rousseau Family Fund  
Graham Rowbottom  
Florence Rowe  
Rowland Family Charitable Trust  
RPG Limit Break  
RSS Development Inc  
Sara L. Rubin and David L. Montanari  
Ann Ruchhoft  
Maricarolyn Rucker  
Rush Oak Park Hospital  
Nancy Russell  
Rustan and Gwendolyn Leino  
Foundation  
Elizabeth Rutana  
Ruth Ann Hyson Charitable Trust  
Michelle Rutman  
James Ryan  
Paul and Kimberlee Ryder

Ryder Family Giving Fund  
Fadie Saad  
Saarela-Miller Giving Fund  
Kalvin Saccal  
Frederick Sacks  
Taneda Sadri  
Matilda Sagaas  
The Salice Family Foundation  
Wayne Salkowitz  
Roger Salomon  
Peter Sam  
San Marino Congregational Church  
Brandon Sanders  
Sandhill Family Fund  
Dan and Bonnie Sandman  
Marilyn Sanford  
Sans Gene Studios, LLC  
SapphireK12 Inc  
Sari Hornstein Family Trust  
Charitable Fund  
Berge Sarkissian  
Sathyarupa Charitable Trust  
Melinda and Kenneth Sauders  
Robert Saum  
Zoe, John and Rena Saunders  
Mr. Sasha Savic and Mrs. Sabrina  
Comic-Savic  
Chris Savide  
Caroline and David Schaefer  
Don and Carol Schaefer  
Wendy and Michael Schaefer  
Elizabeth Schafer  
Jeffrey Scherrer  
David Schiffrin  
Philip Schlak  
Margueritte Schleinitz  
Joanne Schlinkert and  
Court Houseworth  
Kathryn Schmid  
Eric and Penny Schmitz  
Susan Schneiderman and  
Kenneth Korman

Thomas Schnitzer  
The Schnur Family Charitable Fund  
Steven Schoenecker  
Shelley and Ted Schoettinger  
Schott North America, Inc.  
Beth Schroeder  
Peter and Gwyneth Schroeder  
Leonard Schuchman  
Celia and Leonard Schuchman  
Kristie Schultz  
Margot Schulz  
Gunther Schumacher  
Mark Schupack  
Judah Schvimer  
Susan Schwab  
Douglas and Melisa Schwarm  
Joel Schwartz and Karen Krag  
Schwartz Foundation  
Schwartzman Moss Family Fund  
Joann Schwentker  
Joyce Schwer  
Sciabica Family Foundation  
Belkis Sclafani  
Scott Family Fund  
Scott Laboratories Inc.  
SCS Engineers  
Donna Searcy  
George Seaver  
Henry and Dorothy Seibert  
Patricia Seiler  
Helen and Alfred Selgas  
Raymond and Catherine Sementini  
David Sennett  
Servatius Family Charitable Fund  
Marjorie Seybold  
Andrea Shaw  
David Shaw  
Shaw HR Consulting  
Shear Family Foundation, Inc.  
Sheehan Phinney Bass & Green PA  
Megan Sheehan-Dean  
Waqas Sheikh

Sheila Reicher Fine Foundation  
Nora Shepard  
Shepherd Foundation, Inc.  
Kiana Sherwood  
Barbara Shewski  
Henry Shin  
Jenny Shin  
Jennifer Shinska  
Shipbob Inc  
Glenn and Marilyn Shipley  
Shirley A. Kubiak 2nd Amend &  
Restated Tr  
Mary-Ann, Ben and Kirk Shisler  
Shiva-Sherman  
Richard Shore  
Short Survivor's Trust  
Carolee Shudnow  
Michael Shull  
Frances Shuping  
Mark Shutley  
Jonathan Siegel  
Ashley Sievers  
The Sikand Foundation, Inc  
Silberstein Foundation Inc  
Silton Family Foundation  
Jeanne Silvers  
Simmonds Giving Fund  
Stephanie Simon  
Tom Simon  
Elizabeth Simpson  
Joan and Roger Simpson  
Heide and Stephen Sims  
Sixsense Strategy Group Inc.  
Skirmish Foundation  
Paul Slager  
Jared Sleisenger  
Stephen Sligar  
Laurie Sloan  
B. Small  
Jennifer Smallwood  
Christine Smiley  
Sheryl Smiloff

Alexandra Smith  
Claire Smith  
Jeanne Smith  
Josh Smith  
Marc Smith  
Ronald and Christine Smith  
Robert Smyth  
Peter and Sara Snoek  
Christopher and Patrice Sobecki  
Sogawa Giving Fund  
Anthony Sokolich  
Lawrence Solomon  
Solomon Family Foundation  
Elizabeth Solway  
James Sommerville  
The Sonali and Hari Fund  
The Sonya Moore-Wells and David  
Wells Charitable Fund  
Marilyn Soule  
Jessica Spah  
Susanne Spangler  
Spanx by Sara Blakely Foundation  
Fund  
The Spark Foundation Fund  
Spaulding Ridge  
Margo Speciale  
Patti Spence  
Doris Spencer  
Jason spencer  
Spenciner Family Fund  
Linda Spinella  
Jeffery Springer  
Brenda and George Squibb  
St. Ignatius College Prep  
Stablish Foundation  
David and Nancy Stafford  
Darla Stanley  
Stanley Family Giving Account  
Stantec Consulting Services  
Charmelle Staples  
Jenna Stark  
Amber Starnes

Judith Steckler  
Jeff Steele  
Steele Solutions Inc.  
Judith Stein  
Molly Steines  
Helene Stelian  
The Stephen Colbert  
Americone Dream Fund  
Jessica Stern and Adrian Hall  
Leslie C Stevens  
Michael Stevens  
Amy J Stewart  
Jenny Stoddard  
Holly and George Stone  
Ryan and Emily Stoner  
Sutton Stracke  
Strand Marketing  
Scott Stratton  
Mary Stringer  
Student Public Health Association  
Molly Stutzman  
Diane and Jennifer Sue  
David Sulkoske  
Janet Sullivan  
Ross Sullivan  
Mary Summers  
Susan E. Fisher Revocable Trust  
The Susan Isabel Foundation  
Susan R Baker and Nancy J Strauch  
Fund  
Susan Stavis Rahn Charitable Fund  
Janet and Myron Susin  
Joshua Sussal  
Joyce and Norman Sutterer  
Ryan Swant  
Stephen Swartz  
Sweet Bay Foundation  
Catherine Syrett  
Anthony Szeszycki  
T. Robertson Charitable Donor-  
Advised Fund  
Rebecca Tabb



Sara Tagget  
Hunter Talbot  
Stella Taldone  
Louise Tallman  
David Talton  
Stephanie Tam  
Arnold and Ruth Tannenbaum  
Ruth Tantlinger  
Andrea Tarrell  
Samuel Tartakovsky  
Marc Taxman  
Team Daniel Running for Recovery  
from Mental Illness  
Teapot Foundation  
Jane and Mark Teasley  
Ted and Eloise Giannobile  
Ted and PJ Giving Fund  
Donald Tempkin  
Kathy Testoni  
Michael Thelen  
Theodore Cross Family Charitable  
Foundation  
The Thom Family Foundation, Inc.  
Tina Thoman  
Florentine Thomas  
Thomas Jefferson University  
Margaret Thomas-Repcik  
A. Metz Thomson  
Three Sisters Foundation  
Timothy J. Hegedus Irrevocable  
Supplemental Needs Trust  
Lucinda Tischer  
Alice To  
Peter Toal  
Cherie Tobias  
Neil Tockman  
Tom and Wendy Coleman  
Family Foundation  
TORK SYSTEMS INC  
Larry and Andreyra Tornes  
Lonnie Tourville  
The Tracer-Korenman Family Fund

Bryan Tracy  
Rebecca Tracy  
Linsey Tran  
Janet Tranquada  
Trans World Assurance Company  
Transcarent  
Alexandra Travers  
Wisdom Tree  
Jean Trester  
The Trustmark Foundation  
Aaron Tse  
Kevin Tuhy  
Christina Turner  
Geoffrey Tuson  
Donald Tyler and  
Ingrid Johnson-Tyler  
Tyndale Company  
UC San Francisco  
Donald and Susan Ullmann  
Ultra Intelligence & Communications  
Unitarian Universalist Society of  
Sacramento  
United Healthcare Corporation  
Pamela Untalan  
Untitled Investments On Behalf O  
Liranzo  
Unum Group  
Mary Uricchio  
Richard Usher  
V. Bilesimo Glasbergen (Estate)  
Elizabeth Valentine  
John Van Buskirk  
Van Metre Family Foundation  
Rose-Marie Vanotterloo  
Mildred Varholak  
Steven Vath  
Patricia Vaurio  
Joseph and Rosemary Vecchio  
Loretta Vento  
Venture Investing LLC  
The Verity Charitable Fund Inc.  
Vertical IQ Inc

Karen and Jeffrey Vesely  
Veterinary Emergency Group LLC  
Vibrant Brewing LLC  
Peggy Vicente  
Jon and Maria Vincent  
Larry Vinzant  
Violet G. Young Charitable Trust  
Elizabeth Visceglia  
Janet and Philip Vitiello  
Alkinoos Vourlekis  
James Vyse  
W. Bradley Electric  
The W. O'Neil Foundation  
Carolyn Wagner  
Mary Wagner  
Christine Walker  
Eileen Walker  
Gloria Walker and Mykal DeRamus  
Robert and Susan Walker  
Dale Wallace  
Carl and Judy Walsh  
The Walsh Account  
Anna Wang  
Catherine Wang  
Judy Wang  
Richard Wang  
Riska Wango  
Patricia Warburg Cliff and  
Karl Von Frieling  
Gail Warden  
Yasmine S Wasfi  
Paula Watson  
Weas Family BWAG  
The Weatherlow Foundation  
Chris Webb  
WebMD  
Pat and Charles Webster  
Theodore and Dawn Weill  
Joel Weisberg  
Susan Weiss  
Holly Welborn  
Bonnie Welch

Laura Welch  
Karen and Dale Wells  
Val Welman  
Nancy Welsh  
Bobbi and esperer Wenzler  
Tracy Werdenberg  
Mary Grace West  
West Monroe Partners  
The Westport Fund  
Albert Weymouth  
Lynne and Chip Whitacre  
Tracey White  
White and Williams LLP  
Sarah Whittemore  
David Wicklund  
Wendy Wiczek  
Mark Wieder  
Wiegmann Giving Fund  
Joel and Diane Wier  
Robin Wilfong  
Clifford Will  
C.A. and M.A.R. Willette  
William and Mary Sue Morrill  
Charitable Fund  
William and Gertrude Shelley Family  
Foundation  
William F. Harnisch Foundation, Inc.  
Beatrice Williams  
Kevin Williams  
Michelle Williams  
Leilon Willingham  
Bonnie Willoughby  
Karen Wilmer  
Diana Wilson  
Edward and Barbara Wilson  
Stuart and Marilyn Wilson  
Winans Family Gift Fund  
Renee Wineck  
Doug Winkler  
Kenneth Winter  
Justin and Kirsten Wirth  
Ariel Witbeck

The Witt Charitable Fund  
Witt/Kieffer Inc.  
Van Woeltz  
Michael Wojcik  
William Wolf  
Womens Club Volleyball at NC State  
Freddie Wong  
Wong Giving Fund  
Holly Wood  
Kim Wooden  
Tom Woods  
Ryan Woratschka  
Carter and Wendy Wray  
Harrison Wray  
Brett Wright  
Darien and Laura Wright  
Shirley Wright  
Wright Family Charitable Fund  
Wu Charitable Gift Fund  
Deborah Wubben  
Jim Xhema  
Fred Yapuncich and Pam Pruitt  
Yarbrough Family Foundation  
Jeffrey Yates  
Terri Yeckley  
Susan Young and Frederick Yorra  
Kimberly Yukolis  
Janice Zahrlly  
Gary and Darlene Zak  
John Zakelj and Bonnie Watkins  
Donna Zalichin and Barry Kramer  
Mr. and Mrs. Zankel  
Bryan Ziel  
Kevin Zielesinski  
Zion Solutions Group  
Don Zuidweg  
Michael Zweig  
Walter Zydlewski



# FINANCIALS

## 2023 Total Revenue: \$41.7 M

Contributions.....	\$35.1 M
In-Kind Donations.....	\$ .3 M
Investments.....	\$5.0 M
Government.....	\$ .4 M
Events.....	\$ .3 M
Dues.....	\$ .2 M
Book Projects.....	\$ .1 M
Other.....	\$ .1 M
<b>Total Revenue.....</b>	<b>\$41.7 M</b>

## 2023 Total Expenses: \$39.5 M

Programs & Membership.....	\$23.1 M
Research, Support & Ed.....	\$4.6 M
Development.....	\$4.4 M
Advocacy.....	\$3.6 M
Marcom.....	\$2.9 M
Administration.....	\$ .9 M
<b>Total Expense.....</b>	<b>\$39.5 M</b>





# 2023 Board of Directors Executive Committee



**Joyce A. Campbell, J.D.**  
President



**Cathryn Nacario,**  
First Vice-President



**Joseph Gatto, J.D.**  
Second Vice-President



**Jeff Fladen, MSW**  
Treasurer



**Sheldon A. Jacobs**  
Secretary



**Shirley J. Holloway, Ph.D.**  
Immediate President

## Directors



**Devika Bhushan**



**Amy Brinkley**



**Vanessa Fernandes-Randall**



**Victoria Harris**



**Joseph Gatto**



**Ray Charles Lay**



**Pooja Mehta**



**Jeremiah Rainville**



**Dhanu Sannesy**



**Lauren B. Simonds**



**Glenda Wrenn Gordon**



**Darien Wright**  
At-Large Director



**Ruth-Ann Huvane**  
At-Large Director



**Imaan Siddiqi**  
NextGen Director



# NAMI Ambassadors



Tayshia Adams



Willa Amai



Utkarsh Ambudkar



Alex Alpert



Pepper Auerbach



Maria Bamford



Elise Banks



Andrea Barber



Maurice Benard



Mayim Bialik



Ananya Birla



Rachel Bloom



Sterling K Brown



Haley & Hanna Cavinder



Carly Chaikin



Diana Chao



Soul Cole



Traci Coulter



Kelsey Darragh



Kimberly Dawn



Corinne Foxx



Devin Funchess



Brad Gage



Sherman Gillums, Jr.



Clark Gregg



Taraji P. Henson



Marin Hinkle



Jamie Gray Hyder



Chris Hubbard



Brooke Johnson



Naomi Judd



Rita Kamishiro



David Kendrick



Drew & Lea Lachey



Mayan Lopez



Glenn Lutz



Jeannie Mai



Kat Martinez



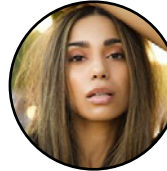
Aija Mayrock



Dawn McCoy



Imani McGee-Stafford



Brittany McGowan



AJ Mendez



Percy  
"Master P" Miller



Dani Nicolet



Nadya Okamoto



Tega Orhorhoro



Rob Robertson



Mauro Ranallo



Snake Sabo



Frank Shamrock



April Simpkins



Marcus Smith



Morgan Stewart



Jay Stolar



Sutton Stracke



Kendall Toole



Alessandra Torresani



Tritonal



Vincent Valentine



Kota Wade



Wil Wheaton



DeWanda Wise



# WE ARE ONE NAMI

We are one NAMI, and we will continue to work as one NAMI to build better lives for all those impacted by mental illness. Through our support groups, education programs, advocacy efforts, resources for specific populations, and support of local NAMI Affiliates, we will continue to instill hope and foster community so that every person has support on their mental health journey.

We are so grateful for your investment in our work. Your support impacts so many, including this help-seeker who contacted NAMI's HelpLine:

"I felt so much better after talking to [a HelpLine Specialist]. She gave me a kind voice when I needed it, some resources in my area, and a sense of relief that I have a next step. I was starting to lose faith in humanity. Loving people volunteering their time [on NAMI's HelpLine] helped renew my hope."

Thank you for being part of NAMI, and thank you for giving people hope.

